

SPECIFICATION SHEET NO:	PSA 209	DESCRIPTION:	FINESSE SD 2.00mm	DATE:	FEB 2023
-------------------------	---------	--------------	-------------------	-------	----------

ARCHITECTURAL SPECIFICATIONS / BOQ

SPECIFICATION:

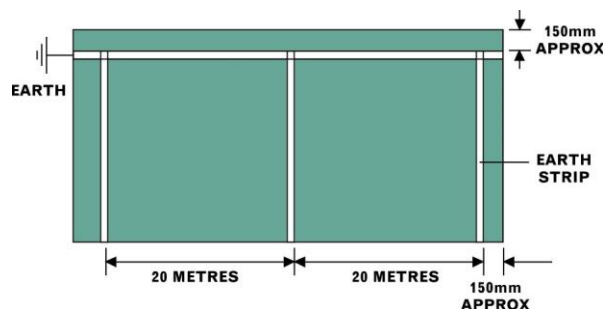
Supply and install Polyflor Finesse SD flexible PVC sheet flooring with static dissipative properties in 2.0mm thickness, it shall be homogeneous and monolayer in construction, the static dissipative properties must be present throughout the full product thickness, the flooring shall conform fully with the requirements of EN 649, in respect of flame spread, the flooring shall have been fully tested to EN 13501-1 and certified as having Class Bfl-S1, achieving the criteria EN ISO 9239-1 $\geq 8\text{kw/m}^2$ and the mandatory requirement of EN ISO 11925-2 pass. It shall be tested to ASTM E648 and certified as having passed with a Class 1 rating, making it suitable for use in institutional, commercial, and public buildings. Tested to ASTM E662, the flooring shall be <450 , with regard to EN 13893 for slip resistance, the flooring shall be classified DS. It shall also be classified R9 for DIN 51130 making it suitable for use in areas which are predominantly dry, but with occasional spillage, the product must have been fully tested for abrasion resistance to the Frick Taber test EN 660: Part 2 and be in abrasion group P, as defined in EN 649, with regard to static dissipative properties, the flooring must conform to the requirements of IBM specifications. When tested to EN 1081 R1/R2 the flooring must have a resistance of <109 ohms. When tested to ESD S7.1, the flooring must have a resistance of between 1×10^6 to 1×10^9 ohms. Tested to BS IEC 61340-4-1 2003 RG, the flooring must have a resistance between 1×10^6 to 1×10^9 ohms, in accordance with EN 649, the in-use classification must be at least 34/43 as defined in EN 685: i.e., commercial areas with very heavy use; and light industrial areas with heavy use, the flooring must possess a valid Agrément certificate rating the product G5ws when laid in accordance with the instructions of Polyflor, with coved skirting and welded joints, the flooring must be available in 2.0 metre width, to minimise the number of joints, in respect of light fastness, the flooring shall have been fully tested to ISO 105-B02 Method 3 and obtain ≥ 6

Colour:

Code:

INSTALLATION: (PLEASE NOTE: ALWAYS USE COMPATIBLE PRODUCTS FROM ONE SUPPLIER)

1. All ESD installations must be tested for moisture using the Polyflor approved Wagner Meter/Protimeter.
2. Regardless of the moisture levels, it is highly recommended that all ESD installations have a moisture barrier applied to the surface prior to self-levelling and application of the earthing grid and floor sheeting.
3. The only recommended adhesive for ESD installations onto a concrete substrate is a water based acrylic conductive adhesive and onto a metal substrate a neoprene conductive adhesive. Generally, it is preferred that a conductive contact adhesive is used.
4. All earthing methods and grids must be laid out as per diagram below.
5. ESD flooring should never be sealed unless a specialized static conductive sealer is used.



If you require any assistance with your installation or have any queries, please contact the Polyflor technical department on (011) 609 3500.

SPECIALIST FLOORING & WALL PROTECTION PARTNER

Tel: 011 609 3500 | Email: marketing@polyflor.co.za | www.polyflor.co.za
Poly Sales House, 8B Buwbes Road North, Sebenza, 1609, South Africa. PO Box 3967, Edenvale, 1610, South Africa

Poly Sales Africa (Pty) Ltd. trading as Polyflor South Africa. Company Registration 2004/012256/07

NOTE: NEVER USE A BLACK PAD TO SCRUB A PUR COATED FLOOR

To maximize efficiency of the cleaning system and minimize costs taking advantage of the Polyflor PUR-polyurethane reinforcement cross linked and UV cured finish, the following is recommended:

1. Post Installation:

- All loose dirt such as dust, grit, sand etc. must be removed, preferably by vacuuming the floor.
- The floor should then be cleaned using a neutral detergent, diluted as per the manufacturer's instructions, machine scrubbed, and dirty cleaning solution wet vacuumed off the floor. (If a wet vacuum is not available, a mop and wringer system can be used).
- Adhesive can be removed with an appropriate detergent/solution such as Polyflor Powerclean if necessary. As a principle, aggressive solvents should be avoided as these may affect the PUR finish. More powerful detergents such as Pro-inox from Nilfisk can be used to remove persistent soiling which is not removed by the initial clean.
- The floor should then be rinsed until all traces of the neutral detergent are removed and wet vacuumed to remove all traces of water.
- We recommend 2 sacrificial coats of Proflor HM matt sealer be applied at this stage as a once off to seal all welded joints and flooring.

(NB: DO NOT STRIP-ONLY WASH AND SEAL. THEREAFTER, NO MORE SEALERS) NEVER STRIP A PUR FLOOR

2. Daily

- Sweep/mop using a disposable cloth system such as the Masslinn system or vacuum to remove dust and grit; (Ensure that the vacuum is fitted with a Hepa filtration system in a healthcare environment)
- Spot or damp mop where required using a neutral detergent such as Proclean.
- Buffing/burnishing with high-speed disc machine.

3. Interim or Weekly Clean (Depending on conditions)

- To remove light scuff marks.

Dry buff with a +- 1000 rpm **ultra-high speed** burnisher using a clean 3M pink eraser or white pad.

- To remove heavy scuff marks:
Scrub with a **low speed** burnisher and neutral detergent, Proclean-diluted 100ml: 10L with cold water using the green Eco Brilliance pad.
- To create a slightly higher sheen, you can use a red pad with a spray buff product(Probuff) and a high-speed machine.

4. Periodically (3-9 monthly) depending on conditions.

- If required, scrub with a +- 165 rpm machine fitted with a red or blue pad using neutral detergent PROCLEAN diluted 20:1 with cold water as appropriate. Rinse well with clean water and dry buff with white pad to restore finish.

Please note that all PVC welding rod is not coated. We recommend the application of a layer of PUR sealer to all welds in a PUR sheeting floor to enhance maintenance procedures.

NB: to create a higher sheen on the floor, use a 1000 rpm machine using a clean white 3M pad or green Eco Brilliance Pad.

These products are all available from Nilfisk (011) 801 4600.

This program will keep maintenance costs to a minimum and **requires no polish.**

Sufficient entrance or barrier matting is highly recommended and will ease the maintenance programme.

POLYFLOR SD

FINESSE SD

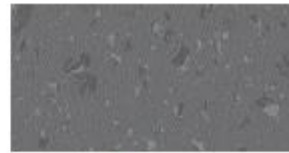
PALETTONE SD



Silver Grey **5110** wlt 2090
NCS S 2500-N LRV 49



Daybreak **5820** wlt 3100
NCS S 2500-N LRV 49



Pencil Lead **8608** wlt 8608
NCS S 6005-B30G LRV 18



Steel Grey **5030** wlt 9100
NCS S 4502-G LRV 32



Lodestone **5830** wlt 3140
NCS S 4000-N LRV 33



Dove Tail **8607** wlt 8607
NCS S 2502-R LRV 38



Ocean Blue **5050** wlt 5350
NCS S 3005-B90B LRV 41



Cascade **5800** wlt 5200
NCS S 3010-B90B LRV 38



Weekend Sky **8611** wlt 8611
NCS S 0907-R90B LRV 64



Teal **5080** wlt 2610
NCS S 4010-B70G LRV 30



Woodglade **5840** wlt 5240
NCS S 3005-G20Y LRV 41



Woodland Air **8615** wlt 8615
NCS S 1005-G20Y LRV 70



Golden Sand **5070** wlt 2500
NCS S 3010-Y10R LRV 43



Moonscape **5860** wlt 5080
NCS S 2005-Y40R LRV 55



Harvest Air **8620** wlt 8620
NCS S 1005-Y30R LRV 69



Flaxen **5060** wlt 5330
NCS S 1010-Y30R LRV 60



Frosted Glass **8606** wlt 8606
NCS S 2002-G30Y LRV 53



wlt = weight · NCS = Natural Colour System · LRV = Light Reflectance Value



Refer to BRE Global ratings on www.greenbooklive.com

SD

Polyflor ESD is a hardwearing homogeneous contract sheet and tile floorcovering with static dissipative properties, engineered for use where static control is required. Polyflor SD, Finesse SD and Palettone SD are ideal for use in telecommunications installations, computer rooms and healthcare facilities such as scanner rooms, X-ray suites and operating theatres, also suitable for use in electronics manufacturing.



	Gauge	EN 428/ISO 24346	2.0mm
	Roll Size	EN 428/ISO 24346	2m x 20m = 40m ²
	Tile Size	EN 428/ISO 24342	Polyflor SD & Finesse SD: 608mm x 608mm = 3.7m ²
	Total Weight	EN 430/ISO 23997	Polyflor SD: 3400g/m ² Finesse SD & Palettone SD: 3030g/m ²
	General Performance	EN 649/EN ISO 10581 ASTM F1913 ASTM F1700	Conforms Conforms Conforms (Polyflor SD & Finesse SD Only)
	Use Area	EN 685/ISO 10874	
	Reaction to Fire	EN 13501 ASTM E648 AS ISO 9239-1 ASTM E662 CAN/ULC S102-2	Class Bfl-S1 Class I ≤0.05kg/m ² Finesse SD & Palettone SD: i450 Finesse SD & Palettone SD: FSV < 300; SDC < 500
	Abrasion Resistance	EN 660-2	Polyflor SD: Group M Finesse SD & Palettone SD: Group P
	Binder Content	EN ISO 10581	Finesse SD & Palettone SD: Type I Polyflor SD: Type II
	Slip Resistance	EN 13893 DIN 51330	Class DS R9
	Electrical Resistance	EN 1081 R _h /R _s ESD S T1 BS IEC 61340-4-1	<10 ⁸ ohms 1 x 10 ⁴ - 1 x 10 ⁹ ohms R _s 1 x 10 ⁴ - 1 x 10 ⁹ ohms All products require minimum 40% RH
	Static Electrical Propensity	EN 1815	<2ks
	VOC Emissions	Finnish M1 Indoor Air Comfort Gold Floorcare	Finesse SD & Palettone SD: Certified Eurofins certified products Certified
	Clean Rooms	ISO 14644-1	Palettone SD: Class 3
Agreement Assurance - Finesse SD and Palettone SD have been independently assessed by the British Board of Agreement and product performance is assured for at least 10 years in recommended use areas. With proper maintenance, the appearance, colour and slip resistance will be retained during this period.			
Environmentally Preferable Flooring - Homogeneous vinyl flooring achieves a generic BRE A+/A rating in the Green Guide to Specification, for contract applications. Polyflor ESD is 100% recyclable and contains an average 25% recycled material. Recyclable via the Recofloor scheme. Visit www.polyflor.com/sustainability			
	Hygiene - All Polyflor commercial sheet vinyl ranges provide a continuous, impervious and hygienic flooring solution which can be confidently cleaned in accordance with recommended maintenance procedures and approved maintenance products. The implementation of an effective cleaning regime is the most important defense against infection.		
	Polyflor homogeneous PUR and Polysulfide flooring ranges are compatible with the most commonly used alcohol-based hand gels. Some alcohol-based hand gels contain a high concentration of ethanol and to discuss their compatibility with Polyflor ESD ranges, contact Customer Technical Services.		
	Access Panel applications require specific fitting instructions, to ensure product performance and achievement of electrical results outlined. For information regarding handling and installation, adhesives, maintenance, applications, chemical resistance and product warranty, consult Polyflor Customer Technical Services on +44 (0)161 767 1912, or email tech@polyflor.com . The data presented is correct at the time of printing. For latest information, please visit our website polyflor.com . Decoration and shade may vary slightly from the samples shown.		

