

Specification Sheet No	PSA 177	Description	QUICKLAY PUR 2.20MM	Date	AUG 2023
------------------------	------------	-------------	------------------------	------	-------------

ARCHITECTURAL SPECIFICATION

SPECIFICATION:

Supply and install Polysafe QuickLay PUR flexible PVC sheet flooring in 2.2mm thickness, containing coloured quartz and natural recycled aggregates to impart enhanced slip resistance, featuring a high quality, cross-linked polyurethane reinforcement to provide superior cleaning benefits, life cycle maintenance savings and optimum appearance retention, manufactured by spreading liquid PVC onto a random glass fibre carrier sheet in one operation, the glass fibre carrier sheet shall be fully encapsulated in PVC, shall fully conform with the European Norm for safety flooring - EN 13845, in respect of flamespread, shall be certified as Class Bfl-S1 according to EN 13501-1, shall have been fully tested to ASTM E648 by an independent test house and have a Class 1 rating, making it suitable for use in institutional, commercial and public buildings, the flooring must have been fully tested by an independent test house to the RRL Pendulum Test (45 Rubber/Slider 96) and have typical results of ≥ 45 in the wet, with a surface roughness of $R_z \geq 20\mu m$, making it suitable for areas where enhanced slip resistance is required, the product must have been fully tested for abrasion resistance to EN 13845, passing the 50,000 cycles test and also meeting EN 660-2 Abrasion Group T, shall possess a valid Agrément certificate when laid in accordance with the instructions of Polyflor, with coved skirtings and welded joints, does not accumulate static charges above 2kV and is classified as 'antistatic' when tested to EN 1815, must be available in 2.0 metre width, to minimise the number of joints, must be suitable for Use Area Classification 23/34/43, as defined in EN ISO 10874 (EN 685), in respect of light fastness, the flooring shall have been fully tested to ISO 105-B02 Method 3 and obtain ≥ 6 .

Colour: Code:

INSTALLATION: (PLEASE NOTE: ALWAYS USE COMPATIBLE PRODUCTS FROM ONE SUPPLIER)

RECEIPT & STORAGE

On receipt of rolls, check that colour references correspond to those ordered, that quantities are correct and that there is no damage.

Check that rolls are from one batch, if that was requested on the order.

On arrival at site, the rolls should be safely secured, in an upright position and stored in accordance with the directions on the roll label at a minimum temperature of 18°C for at least 24 hours prior to installation.

To achieve best results, site conditions should be as described in BS 8203 or prevailing local/national standards. A constant working temperature between 18°C and 27°C should be maintained for at least 48 hours prior to installation, during the installation and for 24 hours afterwards.

POLYSAFE QUICKLAY CONDITIONING

Polysafe QuickLay sheet requires conditioning ahead of installation.

Conditioning should be carried out in the same areas as the installation, to prevent thermally induced dimensional changes.

Conditioning should ALWAYS take place in the area that is to receive the installation.

The conditioning time should be increased to at least 48 hours where the sheet has been stored outside or stored/delivered at temperatures below 10°C.

PRIOR TO INSTALLATION (UNDERFLOOR HEATING)

On installations where underfloor heating is used:

The system should be fully tested and commissioned prior to the flooring installation commencing.

Underfloor Heating systems should be switched off and be fully cooled for a minimum of 48 hours prior to the installation commencing. The system should remain off and fully cooled throughout the entire installation process and for a minimum of 48 hours afterwards. Then slowly bring back up to the working temperature incrementally over several days.

A maximum subfloor temperature of 27°C should never be exceeded.

SPECIALIST FLOORING & WALL PROTECTION PARTNER

Tel: 011 609 3500 | Email: marketing@polyflor.co.za | www.polyflor.co.za
Poly Sales House, 8B Buwbes Road North, Sebenza, 1609, South Africa. PO Box 3967, Edenvale, 1610, South Africa

Poly Sales Africa (Pty) Ltd. trading as Polyflor South Africa. Company Registration 2004/012256/07

PREPARATION OF WORK AREA

The work area should now be prepared to receive the sheet flooring. Ensure that all other trades have completed their work, removing all their equipment and materials.

Remove all debris and sweep or vacuum the whole floor area.

Check the condition of the subfloor and make good, as necessary. Porous or absorbent substrates may require priming ahead of installing the Polysafe QuickLay tape.

Stone or power grind any cementitious subfloor to remove any 'nibs' or ridges.

Sweep or vacuum again prior to laying.

If required by the contract, or if in doubt, check the moisture content of the subfloor and record the results and method used.

Good lighting is essential.

Commencement of work is deemed by many as acceptance of the site conditions as suitable for laying floor covering.

LAYOUT OF LOOSE LAY VINYL SHEET

The architect may have provided a drawing showing the direction in which the material should be laid. In this case, lay the sheet as directed.

On installations where the architect has left this to the discretion of the flooring contractor; at the tender stage show in which direction the material will be laid and state that your estimate is based on this.

If a joint is necessary always pay particular attention to where seams will fall, avoiding such occurrences as seams in the centre of doorways. If large windows are installed, minimise the effect of the joints by laying towards the window.

SLABBING THE SHEET

Polyflor recommends that Polysafe sheet flooring should be rolled out face upward, taking care not to damage the surface, and cut approximately to size.

Allowance of at least 75mm should be made at the ends for trimming in, the slabs should then be left overnight for 24 hours to condition at a consistent temperature range between 18°C and 27°C.

APPLICATION OF ADHESIVE TAPE

Polysafe QuickLay double sided tape should be used at the perimeter of the room and at all seams.

Ensure the tape is only peeled back once the product has been installed correctly and at all seams before grooving and welding.

FITTING THE FIRST LENGTH

Place the first sheet in position next to the wall with the outer edge approximately 15mm from the nearest point.

Adjust the lie of the sheet so that the inner edge is parallel with the axis of the room (Figure 2).

Depending upon the depth of the recesses, either a bar scriber or a pair of scribes should be used to trace the profile of the wall. The scribes should be set to allow for the deepest recess or rake of the wall.

Holding the scribes vertically and square to the edge, trace the wall profile onto the face of the sheet (Figure 3).

Polysafe QuickLay double sided tape should be used at the perimeter of the room and at all seams, set 2mm away from the edge of the room. (Figure 4).

With this method, all irregularities of the wall will be accurately reproduced onto the surface of the sheet. If, because of the colour or decoration, the scribed line is difficult to see, rub suitably contrasting chalk dust into the line to highlight it.

Ease the sheet away from the wall and, using a hook blade trimming knife, cut off the excess material to the scribed line.

Slide the sheet back against the wall and check the fit, making any minor adjustments, as necessary.

When satisfied that the fit on the first edge is correct, use a pencil to trace the opposite edge onto the subfloor (line A-B in Figure 5).

In the centre of the room, draw a line on both the sheet and subfloor square to the main axis of the sheet (line C-D in Figure 5).

Keeping the inner edge of the sheet on line A-B, slide the sheet back to clear the wall at one end of the room.

Set the scribes to the distance now between lines C and D (Figure 6)

Trace the end wall profile and cut to fit as described in preceding paragraphs. Repeat for the other end of the sheet.

CUTTING IN THE SEAMS

Polyflor recommends that all vinyl sheet floor coverings are grooved and welded. Trimming off the Factory Edges of the sheet is a pre-requisite to successful welding

Following installation all joints should be fully welded in accordance with the guidance offered in Section 9 of our Technical Information Manual.

PATTERN TEMPLATE METHOD

Areas which call for a considerable amount of fitting around obstacles, or which are too confined to lay down a sheet for fitting by normal methods, can be dealt with by templating the floor in felt paper.

Dry fit the area with felt paper, leaving a gap of 15mm to 20mm around obstructions and walls.

Draw around the fittings using a compass set at 25mm. New Buildings consider coming to an agreement with the main contractor to fit fixtures such as WCs & sinks after the flooring has been laid.

Mark the template 'This Side Up.'

Place the sheet in a larger area with the face uppermost.

Place the template on top; ensure the direction of decoration on the sheet is correct.

Secure the template firmly in position and, with a pair of scribes set at 25mm, mark the position of all obstacles using the template as a guide.

Using a sharp trimming knife, cut the sheet to the scribed lines, and fit into position.

NOTE Do not use the felt paper template as an underlay.

POST INSTALLATION

Polysafe QuickLay can be trafficked immediately after it has been installed.

As Polysafe QuickLay can be installed earlier in the Construction programme than traditionally fully bonded floors; consideration should be given to adequately protecting against follow on Trades by covering with a suitable proprietary protective covering.

MAINTENANCE: NOTE: NEVER USE A BLACK PAD TO SCRUB A PUR COATED FLOOR

INITIAL CONSTRUCTION CLEAN

- Remove all loose debris
- Remove surface dust and grit by sweeping or vacuuming.
- Apply a solution of neutral cleanser (or alkaline cleanser, dependent upon the level of soiling), diluted to the manufacturer's instructions, with a spray over the section to be cleaned. Leave for sufficient time to react with the soiling.
- Pick up the solution with a clean microfibre mop, using a continuous side-to-side motion. When the mop head becomes loaded, it will start streaking the floor. At this point, the dirty mop head should be removed and placed into a laundry bag and a clean mop head fitted. The cycle should then be repeated until the whole floor is completed.
- The dirty mop heads should then be laundered, in preparation for reuse.

ROUTINE MAINTENANCE

- Remove surface dust and grit by sweeping or vacuum.
- Apply a solution of neutral cleanser (or alkaline cleanser, dependent upon the level of grease or oily contaminants), diluted to the manufacturer's instructions, with a spray over the section to be cleaned. Leave for sufficient time to react with the soiling.
- Pick up the solution with a clean microfibre mop, using a continuous side-to-side motion. When the mop head becomes loaded, it will start streaking the floor. At this point, the dirty mop head should be removed and placed into a laundry bag and a clean mop head fitted. The cycle should then be repeated until the whole floor is completed.
- The dirty mop heads should then be laundered, in preparation for reuse.
- Where detergent residue remains on the floor surface, the area should be rinsed completely with clean, warm water, picked up with a wet vacuum and left to dry thoroughly.
- This maintenance procedure has been designed to optimise the benefits of the Polysafe PUR system – the latest in cleaning technology. The maximum benefits are derived from this system by carrying out this quick and simple procedure daily and by using clean equipment each time, to maximise dirt pick-up and eliminate streaking.

- More traditional mechanical cleaning methods such as a 165rpm rotary scrubbing machine, deck scrubber or mop and bucket system can be used with the appropriate neutral or alkaline cleanser - full details are available from Polyflor.
- In areas subject to heavy soiling, machine scrubbing should be undertaken on a periodic basis, after neutral or alkaline cleanser has been applied to the floor, diluted to the manufacturer's instructions.

APPLICATION OF A FLOOR DRESSING

- Maintainers, polishes, or floor dressings containing polish should **never** be applied to Polysafe PUR ranges, as this may impair the slip resistance but, if in doubt, consult Polyflor Customer Technical Services

This program will keep maintenance costs to a minimum and requires no sealers.

Enough entrance or barrier matting is highly recommended and will greatly ease the maintenance programme.



Polysafe QuickLay PUR

SAFETY FLOORING



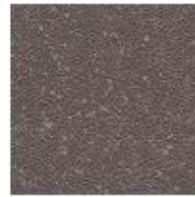
Vanilla **0253**
NCS S 1002-Y

wh 5221
LRV 63



Mocha **0249**
NCS S 3000-Y20R

wh 5202
LRV 45



Americano **0250**
NCS S 0502-B

wh 5204
LRV 32



Rich Black **0252**
NCS S 8000-N

wh 8040
LRV 7



Rock Salt **0251**
NCS S 3000-N

wh 9058
LRV 45



Monsoon **0248**
NCS S 4000-N

wh 5764
LRV 25



Glacier **0241**
NCS S 2502-B

wh 5202
LRV 47



Pebble Shore **0250**
NCS S 5000-N

wh 5233
LRV 26

ADHESIVE-FREE INSTALLATION



Sea Breeze **0254**
NCS S 2000-B

wh 5205
LRV 44



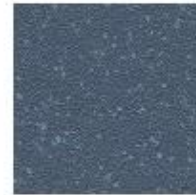
Azure **0255**
NCS S 3030-B90B

wh 5206
LRV 36



Pacific Blue **0244**
NCS S 3030-B90B

wh 5208
LRV 29



Midnight Blue **0245**
NCS S 6030-B90B

wh 5207
LRV 12

wh = wet rid NCS = Natural Colour System LRV = Light Reflectance Value



Polysafe QuickLay PUR

A loose lay safety flooring designed for adhesive free installation, Polysafe QuickLay can be laid over a variety of existing subfloors including new concrete substrates of up to 97% RH. Reduced subfloor preparation requirements & quicker installation makes Polysafe QuickLay the perfect solution for quick turnaround projects in areas where slip resistance is the priority. Typical areas include circulation areas & corridors, classrooms, hospital wards, clinics, nursing homes, washrooms, bar/serenities, food preparation areas, canteens & institutional applications. For continually wet areas please refer to our Polysafe Hydro, Hydro Evolve or Quattro ranges.

45+
RSL Pendulum Test
Sustainable Slip Resistance

R11
RAMP
TEST



	Gauge	EN 428/ISO 24348	2.2mm
	Roll Size	EN 426/ISO 24341	2m x 20m = 40m ²
	Total Weight	EN 430/ISO 23997	2700g/m ²
	General Performance	EN 13845 ASTM F1303	Conforms Conforms
	Use Area	EN 685/ISO 10874	
	Resistance to Chemicals	EN 423/ISO 20987	Good chemical resistance
	Reaction to Fire	EN 13501 ASTM E648 Australian BCA Spec C110-3	Class Bfl-S1 Class I Complies
	Abrasion Resistance	EN 13845 EN 660-2	50,000 cycles Group T
	Enhanced Slip Resistance	EN 13845 AS 4586 Appendix A AS 4586 Appendix D DIN 51130 RSL Pendulum Test Surface Roughness	ES1 P4 R8 R9 +45 (wet test - 45 Rubber/Skider 96) Rz >20µm
The wet slip resistance across all Polysafe products is sustainable throughout the guaranteed life of the product, with strict adherence to HSE Guidelines. For further clarification regarding slip resistance, consult Polyflor.			
	Electrical Behaviour (body voltage)	EN 1815	<2kV Classified as 'antistatic'
	VOC Emissions	AgBB VOC test CBCA/NZCBC Green Star EQ-VOC FloorScore French M1 Classification	Pass Compliant Certified Certified
	Castor Chair Abrasion	EN 425/ISO 4918	Suitable
	Acoustic Impact Sound Reduction	EN ISO 10140-3	10dB
	Indentation Residual	EN 433/ISO 24343-1	<0.10mm

Environmentally Preferable Flooring - Polysafe QuickLay PUR achieves BRE Global A+ rating (Generic) in the Green Guide to Specification in use areas such as education and healthcare. EN 15804 Environmental Product Declaration (EPD) available on request. It is 100% recyclable and contains recycled material. Recyclable via the Recofloor scheme. Visit www.polyflor.com/sustainability

Polysafe PUR - Polysafe QuickLay PUR features a high quality, cross-linked polyurethane reinforcement, UV cured to provide superior cleaning benefits, life cycle maintenance savings and optimum appearance retention. As with all Polysafe products, Polysafe QuickLay PUR should not have a polish applied.

Hygiene - All Polyflor commercial vinyl ranges provide a continuous, impervious and hygienic flooring solution which can be confidently cleaned in accordance with recommended maintenance procedures and approved maintenance products. The implementation of an effective cleaning regime is the most important defence against infection.

Polysafe safety flooring ranges have good resistance to dilute acids and alkalis, are compatible for use with the most commonly used alcohol-based hand gels and are suitable for steam-cleaning on a periodic basis. Chemical resistance charts available on request. For information regarding handling and installation, adhesives, maintenance, applications, chemical resistance and product warranty, consult Polyflor Customer Technical Services on +44 (0)161 767 1912, or email tech@polyflor.com. The data presented is correct at the time of printing. For latest information, please visit our website polyflor.com.

Decoration and shade may vary slightly from the samples shown.

100% RECYCLABLE
CONTAINS RECYCLED MATERIAL



A+ BRE
Green Guide to Specification

EPD
Environmental Product Declaration

Recofloor
Recycling Scheme

PUR
Polyurethane Reinforcement

60%
Recycled Content

ISO 14001
Environmental Management System



Polyflor UK Sales Direct: +44 (0)161 767 1122 • Export Sales Direct: +44 (0)161 767 1913
Sample Requests: +44 (0)161 767 2551 • email: info@polyflor.com • www.polyflor.com

Polyflor Australia Tel: 1800 777 425 • email: sales@polyflor.com.au • www.polyflor.com.au
Polyflor New Zealand Tel: 0800 765 935 • email: sales@polyflor.co.nz • www.polyflor.co.nz

POLYFLOR
KEEPING THE WORLD
SAFE

CE
EN 14041

James H. H. H.
FLOORING

Jan 2019 284/01