

EXPONA[®]

FLOW

DESIGN LED CONTINUOUS VINYL FLOORING



FLOW

DESIGN LED CONTINUOUS VINYL FLOORING

Flooring has the ability to greatly influence and bring together an interior scheme, whether it is selected to provide a subtle neutral base, allowing other fixtures and furnishing within the space to shine, or chosen to make a bold statement with strong colours, lines and textures.

Expona Flow is a unique collection of vinyl sheet designs within the Expona family, historically recognised internationally as offering the highest quality, design led luxury vinyl flooring. Incorporating 50 heavy commercial floor covering options, Expona Flow includes an assortment of floor finishes, textures and colours to suit any interior style.

Authentically replicating natural wood planks from a diverse range of tree species and wood treatments, combined with innovative abstract and fantastical materials, the variety of different colour and pattern combinations is vast.

Combining over 20 years of technical, design and development experience, the Expona Flow collection has been expertly created and exhibits high quality, passion and resilience, all traits expected from an Expona collection.

FLOW

DESIGN LED CONTINUOUS VINYL FLOORING

WOOD

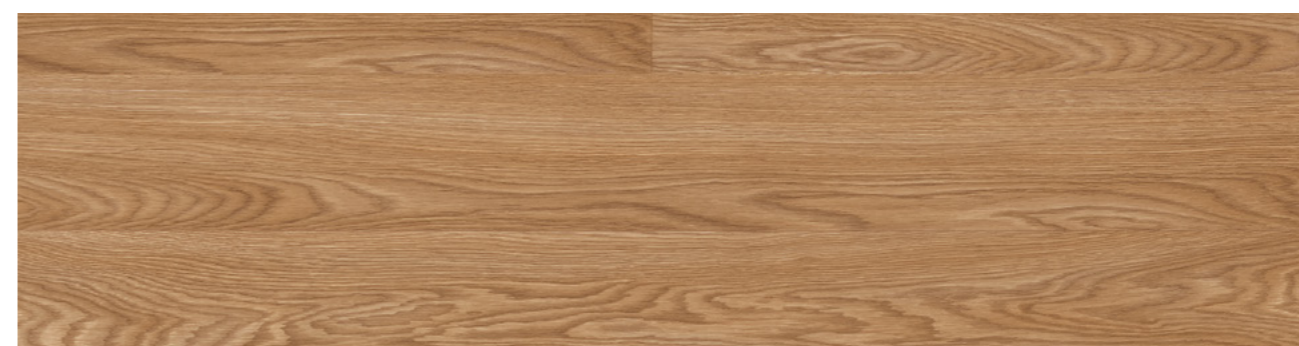
Sympathetically portraying the natural beauty of timber planks, the Expona Flow wood collection offers a mixture of tones, grains and treatments including weathered, painted and limed effects. The subtle surface textures accentuate the many cracks and veins found in the natural wood designs, whilst giving the floor finish an authentic feel.





9820 Blond Oak

Plank w/l: 167 x 1500mm
w/r: 9820



9821 Honey Oak

Plank w/l: 167 x 1500mm
w/r: 9821



9822 Toasted Oak

Plank w/l: 167 x 1500mm
w/r: 9822



9826 Silver Oak

Plank w/l: 200 x 1500mm
w/r: 9826



9827 Smoked Oak

Plank w/l: 200 x 1500mm
w/r: 9827



WOOD



9825 Sun Bleached Oak

Plank w/l: 200 x 1500mm
w/r: 9825



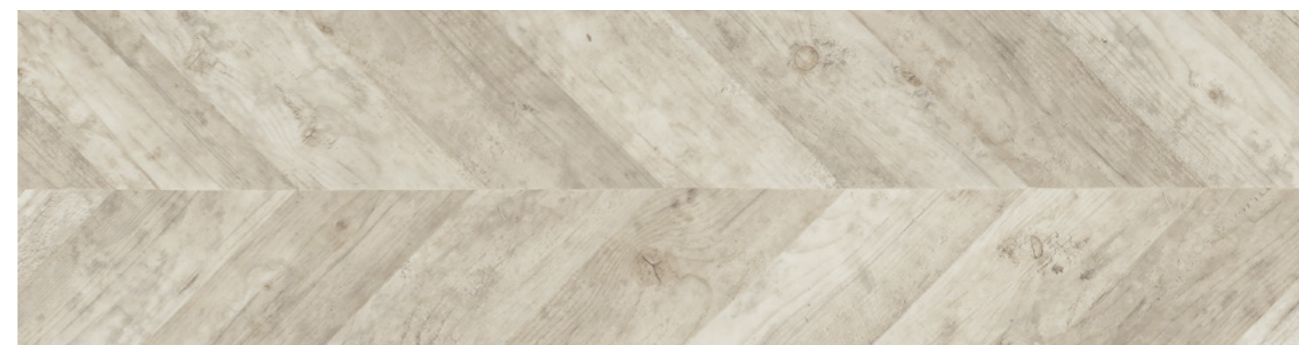
9823 English Oak

Plank w/l: 200 x 1500mm
w/r: 9823



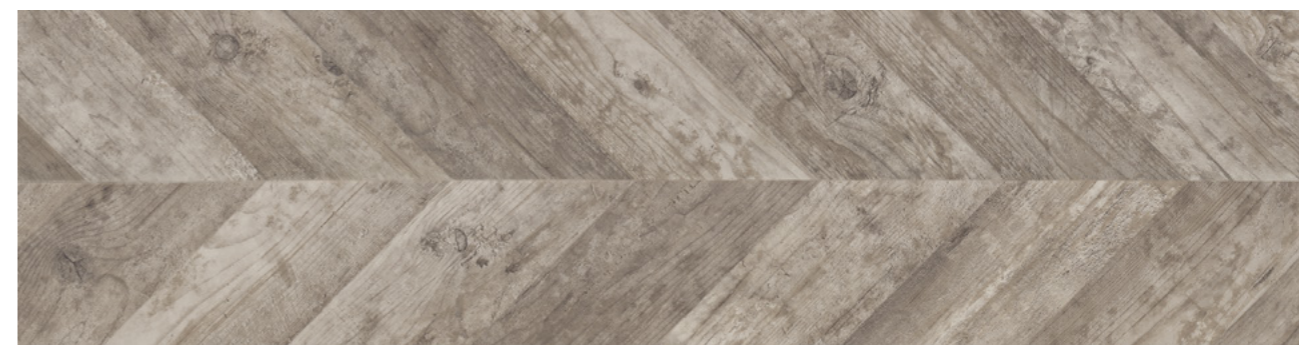
9824 Aged Oak

Plank w/l: 200 x 1500mm
w/r: 9824



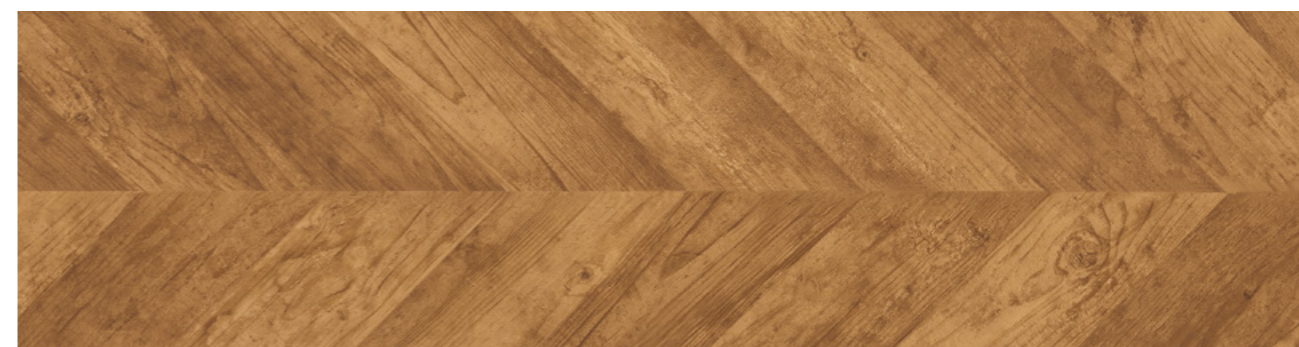
9828 Painted Chevron

Plank w/l: 120 x 700mm
w/r: 9828



9829 Grey Weathered Chevron

Plank w/l: 120 x 700mm
w/r: 9829



9830 Reclaimed Chevron

Plank w/l: 120 x 700mm
w/r: 9830





9833 Classic Limed Ash

Plank w/l: 166 x 1500mm
w/r: 9833



9832 Warm Limed Ash

Plank w/l: 166 x 1500mm
w/r: 9832



9831 Roasted Limed Ash

Plank w/l: 166 x 1500mm
w/r: 9831



WOOD



9839 Blond Pine

Plank w/l: 166 x 1500mm
w/r: 9839



9838 Golden Pine

Plank w/l: 166 x 1500mm
w/r: 9838



9835 Bronzed Pine

Plank w/l: 166 x 1500mm
w/r: 9835



9834 White Pine

Plank w/l: 166 x 1500mm
w/r: 9834



9836 Silvered Pine

Plank w/l: 166 x 1500mm
w/r: 9836



9837 Charcoal Pine

Plank w/l: 166 x 1500mm
w/r: 9837

FLOW

DESIGN LED CONTINUOUS VINYL FLOORING

EFFECTS

Taking a more creative and abstract direction, the Expona Flow effects collection includes a variety of graphic patterns and industrial materials designed to excite the imagination. The mix of neutral shades and attractive brights within the Cosmos collection of continuous flooring provides a smooth finish with subtle pearlescent detailing, whilst the Infinity collection with its striking linear design and contrasting colours creates a bolder effect.

For those interiors seeking a contemporary, industrial feel, the Concrete collection includes both polished and textured designs that can be used individually or in combination to create eye-catching installations.





9869 Honey Beige

w/r: 9869



9867 Espresso

w/r: 9867



9863 Auburn

w/r: 9863



9864 Autumn Rain

w/r: 9864



9868 Firelight

w/r: 9868



9865 Night Sky

w/r: 9865



9866 Raven

w/r: 9866



9844 Luna

w/r: 9844



9840 Oatmeal

w/r: 9840



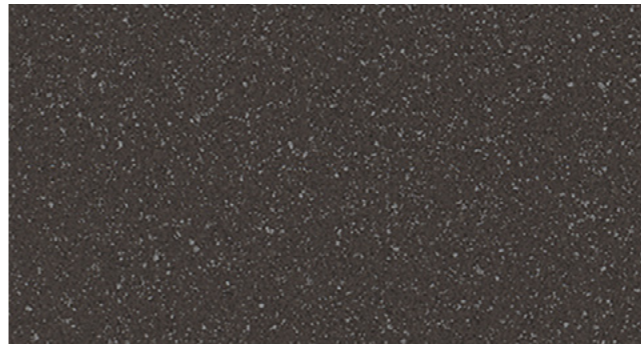
9845 Storm

w/r: 9845



9841 Moleskin

w/r: 9841



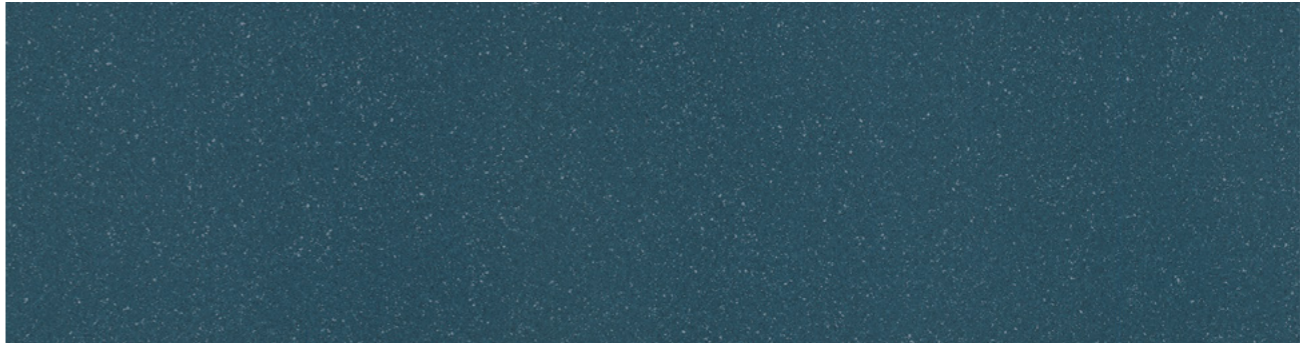
9842 Jet

w/r: 9842



9843 Taupe

w/r: 9843



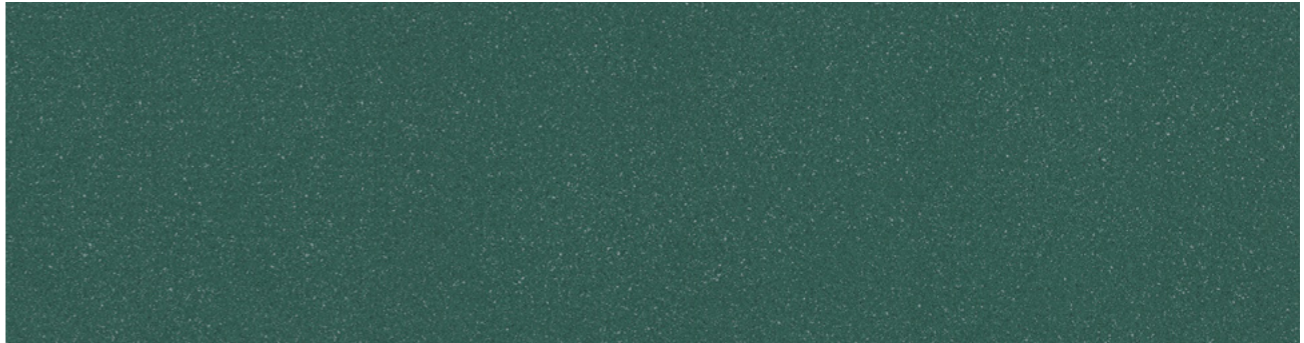
9852 Steel Blue

w/r: 9852



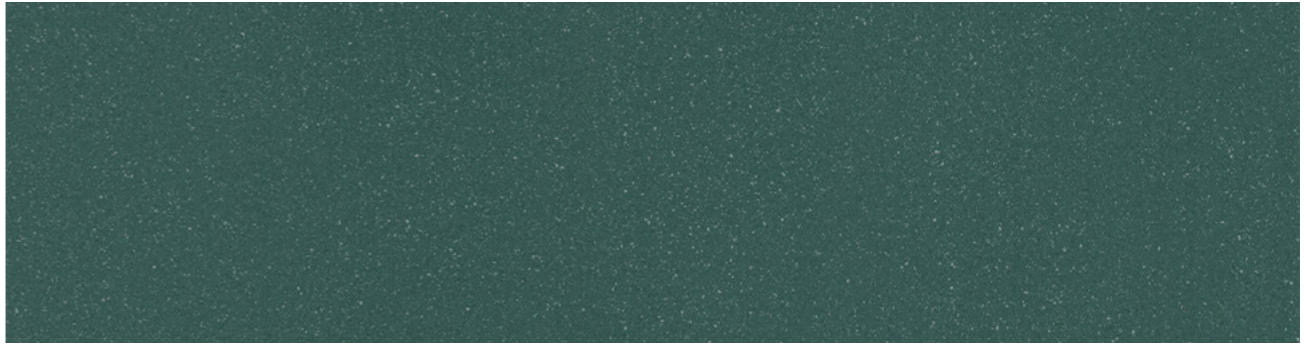
9854 Midnight

w/r: 9854



9851 Teal

w/r: 9851



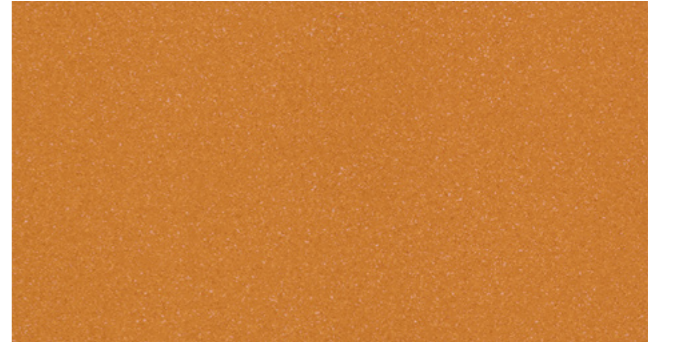
9853 Woodland

w/r: 9853



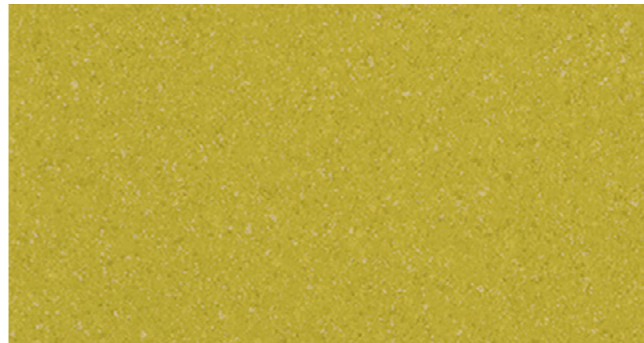
9849 Flaxen

w/r: 9849



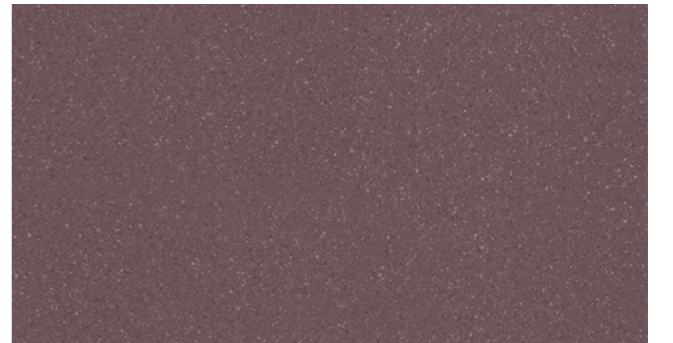
9848 Burnt Orange

w/r: 9848



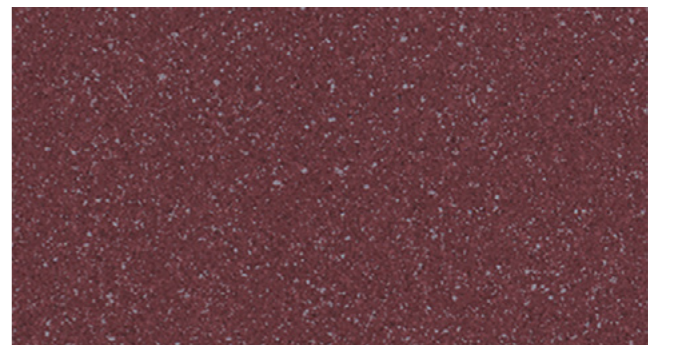
9850 Meadow

w/r: 9850



9846 Mulberry

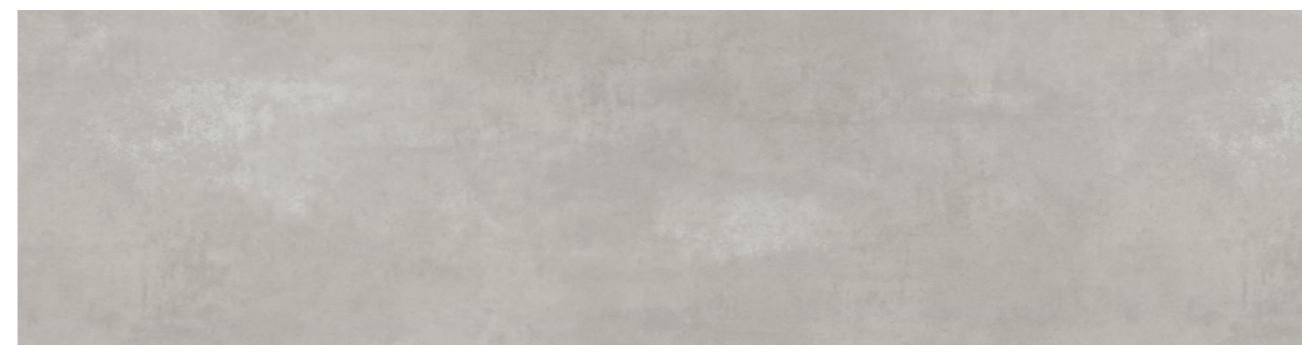
w/r: 9846



9847 Plum

w/r: 9847





9858 Light Grey Concrete

w/r: 9858



9855 Warm Concrete

w/r: 9855

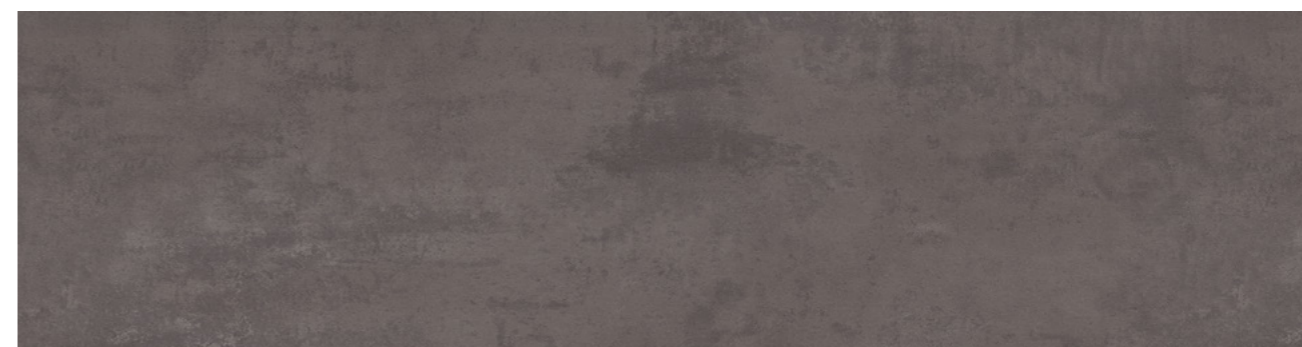


RECEPTION



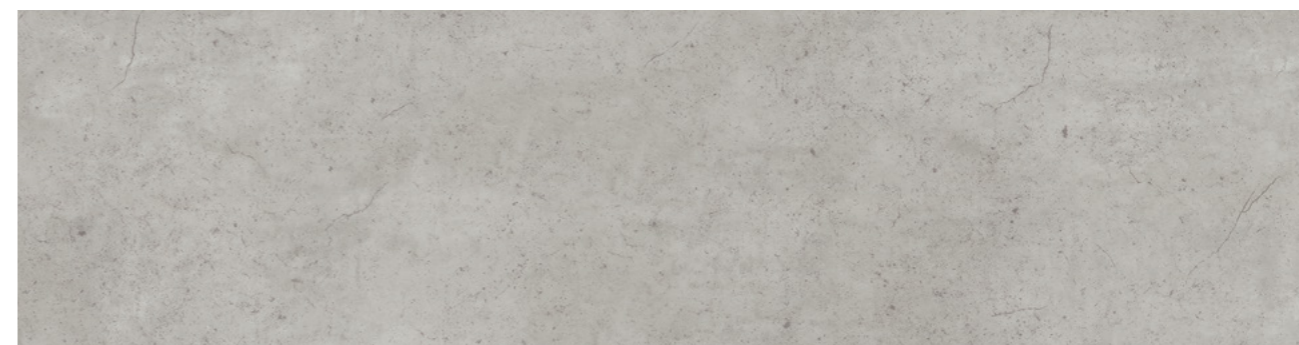
9856 Cool Concrete

w/r: 9856



9857 Dark Grey Concrete

w/r: 9857



9860 Light Industrial Concrete

w/r: 9860



9859 Dark Industrial Concrete

w/r: 9859



9861 Copper Ornamental

w/r: 9861



9862 Onyx Ornamental

w/r: 9862

FLOW

DESIGN LED CONTINUOUS VINYL FLOORING

THE COLLECTIONS

Providing a snap shot of the entire Expona Flow collection of continuous floorcoverings, the following pages also feature the relevant plank sizes and page number where you can view specific product information, larger format scans and example installations.



WOOD COLLECTION



9834 White Pine *page 21*
Plank w/l: 166 x 1500mm w/r: 9834



9828 Painted Chevron *page 13*
Plank w/l: 120 x 700mm w/r: 9828



9829 Grey Weathered Chevron *page 13*
Plank w/l: 120 x 700mm w/r: 9829



9821 Honey Oak *page 7*
Plank w/l: 167 x 1500mm w/r: 9821



9836 Silvered Pine *page 21*
Plank w/l: 166 x 1500mm w/r: 9836



9833 Classic Limed Ash *page 17*
Plank w/l: 166 x 1500mm w/r: 9833



9832 Warm Limed Ash *page 17*
Plank w/l: 166 x 1500mm w/r: 9832



9826 Silver Oak *page 9*
Plank w/l: 200 x 1500mm w/r: 9826



9830 Reclaimed Chevron *page 13*
Plank w/l: 120 x 700mm w/r: 9830



9837 Charcoal Pine *page 21*
Plank w/l: 166 x 1500mm w/r: 9837



9839 Blond Pine *page 19*
Plank w/l: 166 x 1500mm w/r: 9839



9838 Golden Pine *page 19*
Plank w/l: 166 x 1500mm w/r: 9838



9825 Sun Bleached Oak *page 11*
Plank w/l: 200 x 1500mm w/r: 9825



9822 Toasted Oak *page 7*
Plank w/l: 167 x 1500mm w/r: 9822



9827 Smoked Oak *page 9*
Plank w/l: 200 x 1500mm w/r: 9827



9820 Blond Oak *page 7*
Plank w/l: 167 x 1500mm w/r: 9820



9823 English Oak *page 11*
Plank w/l: 200 x 1500mm w/r: 9823



9831 Roasted Limed Ash *page 17*
Plank w/l: 166 x 1500mm w/r: 9831



9835 Bronzed Pine *page 19*
Plank w/l: 166 x 1500mm w/r: 9835



9824 Aged Oak *page 11*
Plank w/l: 200 x 1500mm w/r: 9824

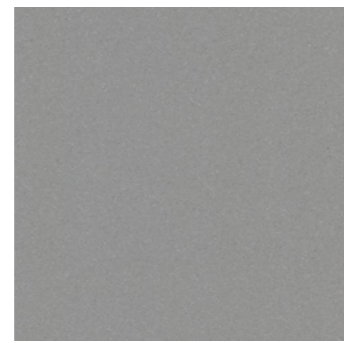
All of the designs featured are supplied as 2 x 20m vinyl rolls.
To ensure that each of the Expona Flow wood designs is accurately replicated, the products may contain knots and markings as part of their design.
Although we endeavour to ensure the brochure represents the true colour of each product, we recommend you view an actual sample which we shall be pleased to supply, free of charge.
Visit polyflor.com and follow the samples link for further details.

plank w/l – plank width / length
w/r – recommended weld rod

COSMOS COLLECTION



9844 Luna *page 29*
w/r: 9844



9845 Storm *page 29*
w/r: 9845



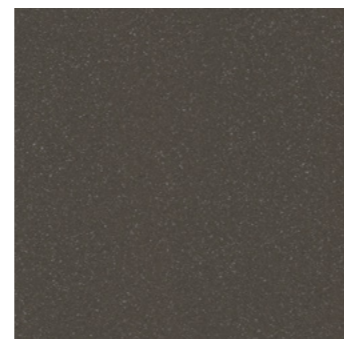
9842 Jet *page 29*
w/r: 9842



9840 Oatmeal *page 29*
w/r: 9840



9841 Moleskin *page 29*
w/r: 9841



9843 Taupe *page 29*
w/r: 9843



9849 Flaxen *page 33*
w/r: 9849



9850 Meadow *page 33*
w/r: 9850



9851 Teal *page 31*
w/r: 9851



9848 Burnt Orange *page 33*
w/r: 9848

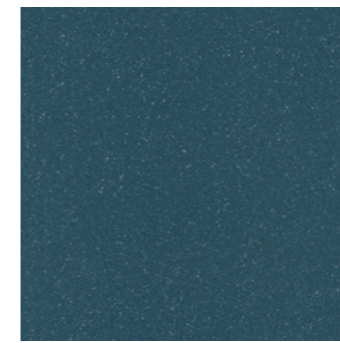


9847 Plum *page 33*
w/r: 9847



9846 Mulberry *page 33*
w/r: 9846

INFINITY COLLECTION



9852 Steel Blue *page 31*
w/r: 9852



9854 Midnight *page 31*
w/r: 9854



9853 Woodland *page 31*
w/r: 9853



9869 Honey Beige *page 25*
w/r: 9869



9863 Auburn *page 25*
w/r: 9863



9864 Autumn Rain *page 27*
w/r: 9864



9868 Firelight *page 27*
w/r: 9868



9865 Night Sky *page 27*
w/r: 9865



9866 Raven *page 27*
w/r: 9866



9867 Espresso *page 25*
w/r: 9867

All of the designs featured are supplied as 2 x 20m vinyl rolls.
Although we endeavour to ensure the brochure represents the true colour of each product, we recommend you view an actual sample which we shall be pleased to supply, free of charge.
Visit polyflor.com and follow the samples link for further details.

CONCRETE COLLECTION



9858 Light Grey Concrete *page 37*
w/r: 9858



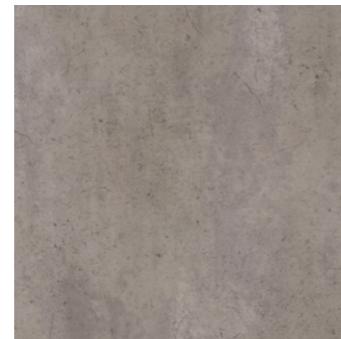
9855 Warm Concrete *page 37*
w/r: 9855



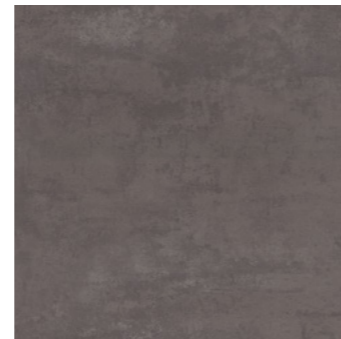
9856 Cool Concrete *page 41*
w/r: 9856



9860 Light Industrial Concrete *page 43*
w/r: 9860



9859 Dark Industrial Concrete *page 43*
w/r: 9859



9857 Dark Grey Concrete *page 41*
w/r: 9857



9861 Copper Ornamental *page 45*
w/r: 9861



9862 Onyx Ornamental *page 45*
w/r: 9862

All of the designs featured are supplied as 2 x 20m vinyl rolls.

Although we endeavour to ensure the brochure represents the true colour of each product, we recommend you view an actual sample which we shall be pleased to supply, free of charge.

Visit polyflor.com and follow the samples link for further details.

w/r – recommended weld rod



FLOW

DESIGN LED CONTINUOUS VINYL FLOORING

DESIGN FLOORS

The Expona Flow collection of wood and effect designs offers a wide variety of shades and patterns, designed to look beautiful whether stand alone or combined with other designs from the range. If however you wish to include a bespoke design floor within your interior, with over 20 years experience in designing and cutting intricate flooring patterns,

Polyflor's Design Service Team are on hand to help guide you through the process.

There is virtually no limit to the shapes, patterns or imagery you can create. We offer the precision and the flexibility of water jet cutting to meet your individual requirements.



HERE TO HELP

ENVIRONMENT

Polyflor have for many decades been recognised as a leading global manufacturer of high quality, high performance floor coverings. We have demonstrated a high level of commitment and endeavour to minimise the impact our products have on the environment without compromising their performance benefits.

There can be few materials better suited to recycling than vinyl flooring. Expona Flow is **100% recyclable**, and can be recycled many times without losing any of its performance properties.

All our Expona Flow flooring has the prescribed CE mark, as a European declaration of performance and is regularly tested to ensure the exceptional standards are continually met. In specific global markets Expona meets stringent technical requirements. If further information is required, contact Polyflor Customer Technical Services.

Expona Flow has achieved the **Indoor Air Comfort Gold** rating. This certificate, issued by Eurofins, is awarded to products with VOC emissions below any globally determined VOC limits.

MAINTENANCE

The incorporation of a **polyurethane reinforcement** into the Expona Flow collection helps to protect the floor covering by resisting soiling and scuffing. Combined with the superior closed surface finish, this enhanced protection allows the use of a polish-free maintenance regime for the lifetime of the flooring.

This leads to an overall maintenance cost saving of 48% over a 20+ year life when compared to untreated heterogeneous flooring, and fewer cleaning chemicals and reduced power requirements mean reduced environmental impact.

WEBSITE

To view details online for the Expona Flow range, visit polyflor.com and follow the links to the Expona Flow product page. Here you will find product details, additional technical data and the option to view installations.

SAMPLES

When making your colour selection, we recommend you view an original sample which we will be happy to supply.

To request individual product samples of any design within the Expona Flow collection, visit polyflor.com. Alternatively, call the dedicated Polyflor Samples Hotline on +44 (0)161 767 2551.

CONTACT US

For general information on your specific project, either speak with your local Polyflor provider or contact us directly. If you require additional detailed technical data, either visit polyflor.com, following links to the technical pages or contact Polyflor Customer Technical Services on +44 (0)161 767 1912 or email tech@polyflor.com.

For details of international Expona availability refer to the inside back cover of this brochure for global contacts or visit polyflor.com and follow the Contact Us link.



| Characteristics | Standards | Unit | EXPONA FLOW |
|--|---|------------------|--|
| Type of floorcovering | EN ISO 10582 | | Heterogeneous, PVC |
| Surface treatment | | | PUR |
| Total weight | EN ISO 23997 | g/m ² | 2,660 |
| Performance classification | EN ISO 10874 | | 23, 34, 43 |
| Gauge | EN ISO 24346 | mm | 2.0 |
| Wear layer thickness | EN ISO 24340 | mm | 0.7 |
| Roll size | EN ISO 24341 | m ² | 2m x 20m = 40 |
| Dimensional stability | EN ISO 23999 | % | ≤ 0.40 |
| Residual indentation | EN ISO 24343-1 | mm | ≤ 0.1 |
| Colour fastness to artificial light | EN ISO 105-B02 Method 3 | | ≥ 6 |
| Behaviour to fire | EN 13501-1 | | Bfl - s1 |
| Slip resistance | DIN 51130 | | R10 For safety with sustainable wet slip resistance refer to the Expona Control or Polysafe ranges. |
| | EN 13893 | | DS |
| | AS 4586 | | R10 |
| Impact sound reduction | EN ISO 10140-3 | dB | 4 |
| Thermal conductivity | EN 12667 | W/mK | 0.25 |
| Assessment of static electrical propensity | EN 1815 | kV | < 2 |
| Chemical resistance | EN ISO 26987 | | Excellent |
| Binder content | EN ISO 10582 | | Type 1 |
| Abrasion resistance | EN 649 | | Group T |
| Castor chair suitability | ISO 4918 | | Yes |
| Underfloor heating suitability | | °C | Suitable max. 27 |
| VOC emissions | Indoor Air Comfort Gold FloorScore AgBB | | Eurofins certified product Certified product Very low emissions |
| Environmental product declaration | | | A+ BRE ENP 415 |

Australia
Polyflor Australia
Tel: +61 3 9215 4400
Tel: 1800 777 425
E-mail: sales@polyflor.com.au

Canada
Polyflor Canada Inc.
Tel: +1 905 364 3000
E-mail: sales@polyflor.ca

China
Polyflor Hong Kong
Tel: +(852) 2865 0101
E-mail: info@polyflor.com.hk

France
James Halstead France SAS
Tel: +33 (0) 8 20 20 32 11
E-mail: info@jhf.fr

Germany
objectflor Art und Design Belags GmbH
Tel: +49 (0) 2236 966 330
E-mail: info@objectflor.de

India
Polyflor India Pvt Ltd
Tel: +91 22 4023 2485
E-mail: info@polyflor.co.in

Ireland
Polyflor Ireland
Tel: +353 (1) 864 9304
E-mail: salesireland@polyflor.com

New Zealand
Polyflor New Zealand Ltd
Tel: +64 9 269 1111
Tel: 0800 765 935
E-mail: sales@polyflor.co.nz

Norway
Polyflor Nordic
Tel: +47 23 00 84 00
E-mail: firmapost@polyflor.no

Poland
Polflor Sp. Z o.o.
Tel: +48 (0) 61 820 3155
E-mail: polyflor@polflor.com.pl

Russia
Polyflor Contract Ltd
Tel: +7 (812) 332 42 02
E-mail: info@polyflor.ru

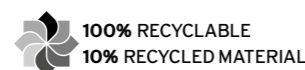
South Africa
Poly Sales Africa (Pty.) Ltd
Tel: +27 (0) 11 609 3500
E-mail: info@polyflor.co.za

Sweden
FalckDesign AB
Tel: +46 (0) 300 15820
E-mail: info@falckdesign.com

POLYFLOR™ UK

Polyflor Ltd. PO Box 3, Radcliffe New Road
Whitefield, Manchester, M45 7NR

UK Sales Direct: +44 (0) 161 767 1122
Export Sales Direct: +44 (0) 161 767 1913
UK Fax: +44 (0) 161 767 1128
Export Fax: +44 (0) 161 767 1166
Technical Support: +44 (0) 161 767 1912
Reception: +44 (0) 161 767 1111
E-mail: info@polyflor.com





For details on distribution,
as well as up to date product and
technical information, please visit

www.polyflor.com