

HETEROGENEOUS

Distinctive, high performance compact sheet vinyl floor coverings in a multi-layer construction. Providing a broad range of engaging and innovative pattern finishes and colour options, the design possibilities are endless. Ideally suited to the demands of commercial and residential interiors.

COMPACT

Expona Flow PUR	48
Bloc PUR	52
Forest fx PUR	54

ACOUSTIC

Silentflor PUR	56
Acoustix Forest fx PUR	60
Polysafe Wood fx Acoustix PUR	62
Architex PUR	64
Designatex PUR	66
Secura PUR	68
Acoustifoam	70

TECHNICAL DATA	STANDARDS	Expona Flow PUR	Bloc PUR	Forest fx PUR	Silentflor PUR	Acoustix Forest fx PUR	Polysafe Wood fx Acoustix PUR	Architex PUR	Designatex PUR	Secura PUR
----------------	-----------	-----------------	----------	---------------	----------------	------------------------	-------------------------------	--------------	----------------	------------

Product Format

Gauge	ISO 24346 (EN 428)	2.0mm	2.0mm	2.0mm	3.7mm	3.7mm	3.7mm	3.5m	3.0mm	3.0mm
Wear Layer	ISO 24340 (EN 429)	0.70mm	0.70mm	0.70mm	0.65mm	0.65mm	0.65mm	0.35mm	0.30mm	0.35mm
Sheet Size	ISO 24341 (EN 426)	2m x 20m	2m x 20m	2m x 20m	2m x 20m	2m x 20m	2m x 20m	4m x 20-25m 3m x 20-25m 2m x 20-25m	4m x 20-25m 3m x 20-25m 2m x 20-25m	4m x 20-25m 3m x 20-25m 2m x 20-25m
Total Weight	ISO 23997 (EN 430)	2660g/m ²	2660g/m ²	2660g/m ²	2550g/m ²	2550g/m ²	2670g/m ²	2150g/m ²	1700g/m ²	1780g/m ²
Finish		PUR	PUR	PUR	PUR	PUR	PUR	PUR	PUR	PUR

Performance Requirements

General Performance	ISO 10582 (EN 649)	Conforms	Conforms	Conforms	-	-	-	-	-	-
	ISO11638 (EN 651)	-	-	-	Conforms	Conforms	Conforms	-	-	-
	ISO 26986 (EN 653)	-	-	-	-	-	-	Conforms	Conforms	Conforms
Use Area	ISO 10874 (EN 685)	23, 34, 43	23, 34, 43	23, 34, 43	23, 34, 42	23, 34, 42	23, 34, 42	23, 32	23, 31	23, 32, 41
Slip Resistance	EN 13893	Class DS	Class DS	Class DS	Class DS	Class DS	Class DS	Class DS	Class DS	Class DS
	DIN 51130 / DIN EN 16165 Ann. B	R10	R10	R10	R10	R10	R10	R10	R10	R10
Binder Content	ISO 10582	Type I	Type I	Type I	Type I	Type I	-	-	-	-
Abrasion Resistance	EN 649	Group T	Group T	Group T	-	-	-	-	-	-
	EN 651	-	-	-	Group T	Group T	-	-	-	-
	EN 653	-	-	-	-	-	-	Group T	Group T	Group T
Reaction to Fire	EN 13501-1	Class Bfl-S1	Class Bfl-S1	Class Bfl-S1	Class Bfl-S1	Class Bfl-S1	Class Bfl-S1	Class Bfl-S1	Class Bfl-S1	Class Bfl-S1
	ASTM E648	Class 1	Class 1	Class 1	Class 1	Class 1	Class 1	-	-	-
	CAN/ULC S102.2	FSV < 300; SDV < 500	FSV < 300; SDV < 500	FSV < 300; SDV < 500	FSV < 300; SDV < 500	FSV < 300; SDV < 500	FSV < 300; SDV < 500	-	-	-
Static Electrical Propensity	EN 1815	≤2.0kV Classified as 'antistatic'	≤2.0kV Classified as 'antistatic'	≤2.0kV Classified as 'antistatic'	≤2.0kV Classified as 'antistatic'	≤2.0kV Classified as 'antistatic'	≤2.0kV Classified as 'antistatic'	≤2.0kV Classified as 'antistatic'	≤2.0kV Classified as 'antistatic'	≤2.0kV Classified as 'antistatic'
Residual Indentation	ASTM F970 (Modified)	<0.005" (750 psi)	<0.005" (750 psi)	<0.005" (750 psi)	≤0.009" (750 psi)	≤0.009" (750 psi)	-	-	-	-
	ISO 24343-1 (EN 433)	≤0.10mm	≤0.10mm	≤0.10mm	≤0.20mm	≤0.20mm	≤0.20mm	≤0.20mm	≤0.35mm	≤0.20mm
Castor Chair (continuous use)	ISO 4918 (EN 425)	Suitable	Suitable	Suitable	Suitable	Suitable	Suitable	Suitable	Suitable	Suitable

Sustainability

BRE Green Guide		A+ ENP 415	A+ ENP 415	A+ ENP 415	A+ ENP 415	A+ ENP 415	A+ ENP 415	A+ Generic	A+ ENP 415	A+ ENP 415
Indoor Air Comfort Gold		Eurofins certified product	Eurofins certified product	Eurofins certified product	Eurofins certified product	Eurofins certified product	Eurofins certified product	Eurofins certified product	Eurofins certified product	Eurofins certified product
FloorScore		Certified	Certified	Certified	Certified	Certified	Certified	Certified	Certified	Certified
Finnish M1		Certified	Certified	Certified	Certified	Certified	-	-	-	-
AgBB/ABG		Pass	Pass	Pass	Pass	Pass	Pass	Pass	Pass	Pass
Responsible Sourcing	BES 6001	Excellent	Excellent	Excellent	Excellent	Excellent	Excellent	-	Excellent	Excellent

Acoustic Performance

Impact Sound Reduction	ISO 10140-3	4dB	4dB	4dB	19dB	19dB	19dB	19dB	17dB	19dB
------------------------	-------------	-----	-----	-----	------	------	------	------	------	------

Maintenance Performance

Resistance to Chemicals	ISO 26987 (EN 423)	Good resistance	Good resistance	Good resistance	Good resistance	Good resistance	Good resistance	Good resistance	Good resistance	Good resistance
-------------------------	--------------------	-----------------	-----------------	-----------------	-----------------	-----------------	-----------------	-----------------	-----------------	-----------------

All Polyflor commercial sheet vinyl ranges provide a continuous, impervious and hygienic flooring solution which can be confidently cleaned in accordance with recommended maintenance procedures and approved maintenance products. The implementation of an effective cleaning regime is the most important defence against infection.



Expona Flow PUR



Expona Flow PUR

Technical Specification

Product Format

Gauge	ISO 24346 (EN 428)	2.0mm
Wear Layer	ISO 24340 (EN 429)	0.70mm
Total Weight	ISO 23997 (EN 430)	2660g/m ²
Finish	PUR	

Performance Requirements

General Performance	ISO 10582 (EN 649) ASTM F1303	Conforms Type I, Grade I, Class B Backing
Use Area	ISO 10874 (EN 685) EN 13893 DIN 51130 /	23, 34, 43 Class DS R10
Slip Resistance	DIN EN 16165 Ann. B AS 4586 ASTM D2047	R10 SCOF \geq 0.5
Binder Content	ISO 10582	Type I
Abrasion Resistance	EN 649	Group T
Reaction to Fire	EN 13501-1 ASTM E648 CAN/ULC S102.2	Class Bfl-S1 Class 1 FSV < 300; SDV < 500
Static Electrical Propensity	EN 1815	\leq 2.0kV Classified as 'antistatic'
Residual Indentation	ASTM F1914 ASTM F970 (Modified) ISO 24343-1 (EN 433)	<0.005" <0.005" (750 psi) \leq 0.10mm
Castor Chair (continuous use)	ISO 4918 (EN 425)	Suitable
Dimensional Stability	ISO 23999 (EN 434)	\leq 0.40%
Flexibility	ISO 24344 (EN 435) ASTM F137	(Method A) Pass 20mm ϕ 0.25" Pass
Underfloor Heating		Suitable, max 27°C
Light Fastness	ISO 105-B02 (Method 3)	\geq 6
Resistance to Light	ASTM F1515	$\Delta E \leq$ 8.0 - Meets
Resistance to Heat	ASTM F1514	$\Delta E \leq$ 8.0 - Meets

Sustainability

BRE Green Guide	A+ ENP 415	
GreenTag	LCA Rate Gold Plus	GreenRate level A
Generic EN 15804 EPD	Available	
Recyclable	100%	
Recycled Content	10%	
REACH	Compliant	
Indoor Air Comfort Gold	Eurofins certified product	
FloorScore	Certified	
Finnish M1	Certified	
AqBB/ABG	Pass	
Responsible Sourcing	BES 6001	Excellent

Acoustic Performance

Impact Sound Reduction	ISO 10140-3	4dB
------------------------	-------------	-----

Maintenance Performance

Resistance to Chemicals	ISO 26987 (EN 423) ASTM F925	Good Good
-------------------------	---------------------------------	--------------

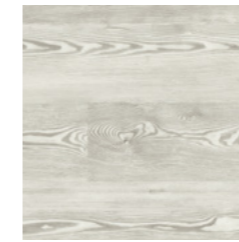
All Polyflor commercial sheet vinyl ranges provide a continuous, impervious and hygienic flooring solution which can be confidently cleaned in accordance with recommended maintenance procedures and approved maintenance products. The implementation of an effective cleaning regime is the most important defence against infection.

Hygiene

Bacterial Resistance	ISO 846 Part C	Does not favour growth
----------------------	----------------	------------------------

Sheet Size

Format	Size	Shades	Coverage per Roll
Sheet	2m x 20m	50	40m ²



White Pine 9834
plank size in sheet: 166 x 1500mm
w/r 9834 LRV 57



Painted Chevron 9828
plank size in sheet: 120 x 700mm
w/r 9828 LRV 43



Sun Bleached Oak 9825
plank size in sheet: 200 x 1500mm
w/r 9825 LRV 31



Silver Oak 9826
plank size in sheet: 200 x 1500mm
w/r 9826 LRV 28



Grey Weathered Chevron 9829
plank size in sheet: 120 x 700mm
w/r 9829 LRV 26



Classic Limed Ash 9833
plank size in sheet: 166 x 1500mm
w/r 9833 LRV 49



Warm Limed Ash 9832
plank size in sheet: 166 x 1500mm
w/r 9832 LRV 34



Blond Pine 9839
plank size in sheet: 166 x 1500mm
w/r 9839 LRV 37



Blond Oak 9820
plank size in sheet: 167 x 1500mm
w/r 9820 LRV 28



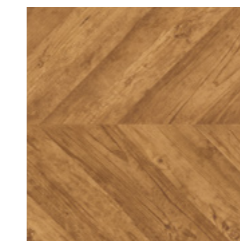
Roasted Limed Ash 9831
plank size in sheet: 166 x 1500mm
w/r 9831 LRV 27



English Oak 9823
plank size in sheet: 200 x 1500mm
w/r 9823 LRV 24



Golden Pine 9838
plank size in sheet: 166 x 1500mm
w/r 9838 LRV 25



Reclaimed Chevron 9830
plank size in sheet: 120 x 700mm
w/r 9830 LRV 17



Honey Oak 9821
plank size in sheet: 167 x 1500mm
w/r 9821 LRV 22



Toasted Oak 9822
plank size in sheet: 167 x 1500mm
w/r 9822 LRV 18



Bronzed Pine 9835
plank size in sheet: 166 x 1500mm
w/r 9835 LRV 14



Aged Oak 9824
plank size in sheet: 200 x 1500mm
w/r 9824 LRV 8



Silvered Pine 9836
plank size in sheet: 166 x 1500mm
w/r 9836 LRV 17



Smoked Oak 9827
plank size in sheet: 200 x 1500mm
w/r 9827 LRV 11



Charcoal Pine 9837
plank size in sheet: 166 x 1500mm
w/r 9837 LRV 13



Honey Beige 9869
NCS S 3005-Y50R
w/r 9869 LRV 29



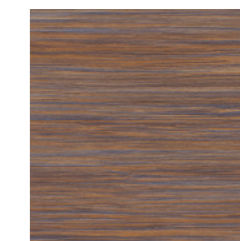
Auburn 9863
NCS S 5020-Y30R
w/r 9863 LRV 17



Espresso 9867
NCS S 7005-Y80R
w/r 9867 LRV 10



Autumn Rain 9864
NCS S 5005-Y80R
w/r 9864 LRV 24



Firelight 9868
NCS S 5020-Y40R
w/r 9868 LRV 16

w/r - Weld Rod

LRV - Light Reflectance Value

NCS - Natural Colour System



Night Sky **9865**
NCS S 7000-N
w/r 9865 LRV 13



Raven **9866**
NCS S 7502-R
w/r 9866 LRV 12



Luna **9844**
NCS S 1502-B
w/r 9844 LRV 48



Storm **9845**
NCS S 3502-B
w/r 9845 LRV 26



Jet **9842**
NCS S 8000-N
w/r 9842 LRV 8



Steel Blue **9852**
NCS S 6020-B10G
w/r 9852 LRV 10



Midnight **9854**
NCS S 7005-R80B
w/r 9854 LRV 10



Oatmeal **9840**
NCS S 2005-G90Y
w/r 9840 LRV 43



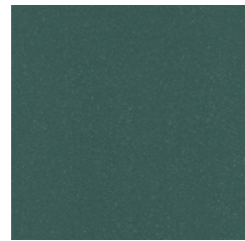
Moleskin **9841**
NCS S 3005-Y20R
w/r 9841 LRV 28



Taupe **9843**
NCS S 7502-Y
w/r 9843 LRV 10



Teal **9851**
NCS S 6020-B10G
w/r 9851 LRV 11



Woodland **9853**
NCS S 6020-B50G
w/r 9853 LRV 11



Flaxen **9849**
NCS S 0560-Y
w/r 9849 LRV 44



Meadow **9850**
NCS S 2050-G90Y
w/r 9850 LRV 32



Burnt Orange **9848**
NCS S 3040-Y40R
w/r 9848 LRV 24



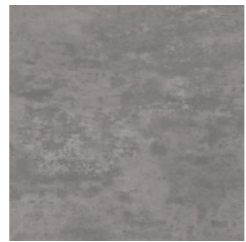
Mulberry **9846**
NCS S 6010-R30B
w/r 9846 LRV 13



Plum **9847**
NCS S 6020-R10B
w/r 9847 LRV 9



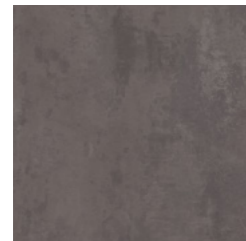
Light Grey Concrete **9858**
NCS S 3000-N
w/r 9858 LRV 40



Cool Concrete **9856**
NCS S 4500-N
w/r 9856 LRV 22



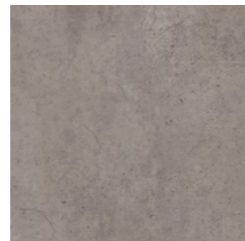
Warm Concrete **9855**
NCS S 3502-R
w/r 9855 LRV 25



Dark Grey Concrete **9857**
NCS S 6502-R
w/r 9857 LRV 13



Light Industrial Concrete **9860**
NCS S 2500-N
w/r 9860 LRV 35



Dark Industrial Concrete **9859**
NCS S 4502-R
w/r 9859 LRV 24



Copper Ornamental **9861**
NCS S 5502-R
w/r 9861 LRV 19



Onyx Ornamental **9862**
NCS S 7000-N
w/r 9862 LRV 11

w/r - Weld Rod

LRV - Light Reflectance Value

NCS - Natural Colour System



HOMOGENEUS
HETEROGENEOUS
SAFETY
LUXURY VINYL TILES
LOOSE LAY
INTERWOVEN VINYL TILES
ESD
SPORT
SEMI-FLEXIBLE TILES
RUBBER
WALL CLADDING



Bloc PUR

UK CA CE
BS EN 14041 EN 14041

Technical Specification

Product Format

Gauge	ISO 24346 (EN 428)	2.0mm
Wear Layer	ISO 24340 (EN 429)	0.70mm
Total Weight	ISO 23997 (EN 430)	2660g/m ²
Finish	PUR	

Performance Requirements

General Performance	ISO 10582 (EN 649) ASTM F1303	Conforms Type I, Grade I, Class B Backing
Use Area	ISO 10874 (EN 685)	23, 34, 43
Slip Resistance	EN 13893	Class DS
	DIN 51130 / DIN EN 16165 Ann. B	R10
	ASTM D2047	SCOF ≥0.5
Binder Content	ISO 10582	Type I
Abrasion Resistance	EN 649	Group T
Reaction to Fire	EN 13501-1	Class Bfl-S1
	ASTM E648	Class 1
	CAN/ULC S102.2	FSV < 300; SDV < 500
Static Electrical Propensity	EN 1815	≤2.0kV Classified as 'antistatic'
	ASTM F1914	<0.005"
Residual Indentation	ASTM F970 (Modified)	<0.005" (750 psi)
	ISO 24343-1 (EN 433)	≤0.10mm
Castor Chair (continuous use)	ISO 4918 (EN 425)	Suitable
Dimensional Stability	ISO 23999 (EN 434)	≤0.40%
Flexibility	ISO 24344 (EN 435)	(Method A) Pass 20mm ø
	ASTM F137	0.25" Pass
Underfloor Heating	Suitable, max 27°C	
Light Fastness	ISO 105-B02 (Method 3)	≥6
Resistance to Light	ASTM F1515	ΔE ≤ 8.0 - Meets
Resistance to Heat	ASTM F1514	ΔE ≤ 8.0 - Meets

Sheet Size

Format	Size	Shades	Coverage per Roll
Sheet	2m x 20m	16	40m ²

Sustainability

BRE Green Guide	A+ ENP 415	
GreenTag	LCA Rate Silver Plus	GreenRate level A
Generic EN 15804 EPD	Available	
Recyclable	100%	
Recycled Content	10%	
REACH	Compliant	
Indoor Air Comfort Gold	Eurofins certified product	
FloorScore	Certified	
Finnish M1	Certified	
AqBB/ABG	Pass	
Responsible Sourcing	BES 6001	Excellent

Acoustic Performance

Impact Sound Reduction	ISO 10140-3	4dB
------------------------	-------------	-----

Maintenance Performance

Resistance to Chemicals	ISO 26987 (EN 423)	Good
	ASTM F925	Good

All Polyflor commercial sheet vinyl ranges provide a continuous, impervious and hygienic flooring solution which can be confidently cleaned in accordance with recommended maintenance procedures and approved maintenance products. The implementation of an effective cleaning regime is the most important defence against infection.

Hygiene

Bacterial Resistance	ISO 846 Part C	Does not favour growth
----------------------	----------------	------------------------

Bloc PUR



Loft White **9931**
NCS S 0502-G50Y
w/r 9931 LRV 84



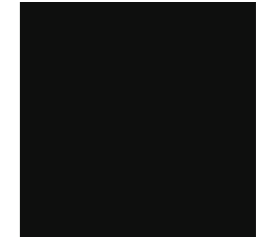
Rock Salt **9932**
NCS S 1502-G50Y
w/r 9932 LRV 64



Studio Grey **9933**
NCS S 3000-N
w/r 9933 LRV 45



Urban Chic **9934**
NCS S 5502-B
w/r 9934 LRV 21



Classic Black **9935**
NCS S 8500-N
w/r 9935 LRV 5



Lime Crush **9940**
NCS S 2060-G80Y
w/r 9940 LRV 38



Soft Moss **9942**
NCS S 4040-G70Y
w/r 9942 LRV 22



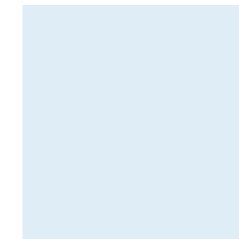
Woodland Green **9941**
NCS S 3060-G40Y
w/r 9941 LRV 22



Caramel Blush **9944**
NCS S 2010-Y30R
w/r 9944 LRV 53



Clay Deep **9946**
NCS S 5005-Y20R
w/r 9946 LRV 25



Cool Breeze **9936**
NCS S 0515-R80B
w/r 9936 LRV 71



Nordic Sky **9937**
NCS S 3030-R90B
w/r 9937 LRV 28



Marine Blue **9939**
NCS S 5040-R80B
w/r 9939 LRV 9



Lemon Punch **9947**
NCS S 1080-Y
w/r 9947 LRV 53



Red Beacon **9948**
NCS S 1080-Y80R
w/r 9948 LRV 18



Lilac Essence **9949**
NCS S 1510-R40B
w/r 9949 LRV 57

w/r - Weld Rod

LRV - Light Reflectance Value

NCS - Natural Colour System

HOMOGENEOUS
HETEROGENEOUS
SAFETY
LUXURY VINYL TILES
LOOSE LAY
INTERWOVEN VINYL TILES
ESD
SPORT
SEMI-FLEXIBLE TILES
RUBBER
WALL CLADDING



Forest fx PUR

Forest fx PUR

Technical Specification

Product Format

Gauge	ISO 24346 (EN 428)	2.0mm
Wear Layer	ISO 24340 (EN 429)	0.70mm
Total Weight	ISO 23997 (EN 430)	2660g/m ²
Finish	PUR	

Performance Requirements

General Performance	ISO 10582 (EN 649)	Conforms
	ASTM F1303	Type I, Grade I, Class B Backing
Use Area	ISO 10874 (EN 685)	23, 34, 43
	EN 13893	Class DS
Slip Resistance	DIN 51130 /	R10
	DIN EN 16165 Ann. B	R10
	AS 4586	SCOF ≥0.5
ASTM D2047		
Binder Content	ISO 10582	Type I
Abrasion Resistance	EN 649	Group T
	EN 13501-1	Class Bfl-S1
Reaction to Fire	ASTM E648	Class 1
	CAN/ULC S102.2	FSV < 300; SDV < 500
Static Electrical Propensity	EN 1815	≤2.0kV Classified as 'antistatic'
	ASTM F1914	<0.005"
Residual Indentation	ASTM F970 (Modified)	<0.005" (750 psi)
	ISO 24343-1 (EN 433)	≤0.10mm
Castor Chair (continuous use)	ISO 4918 (EN 425)	Suitable
Dimensional Stability	ISO 23999 (EN 434)	≤0.40%
Flexibility	ISO 24344 (EN 435)	(Method A) Pass 20mm ø
	ASTM F137	0.25" Pass
Underfloor Heating	Suitable, max 27°C	
Light Fastness	ISO 105-B02 (Method 3)	≥6
Resistance to Light	ASTM F1515	ΔE ≤ 8.0 - Meets
Resistance to Heat	ASTM F1514	ΔE ≤ 8.0 - Meets

Sustainability

BRE Green Guide	A+ ENP 415	
GreenTag	LCA Rate Gold Plus	GreenRate level A
Generic EN 15804 EPD	Available	
Recyclable	100%	
Recycled Content	10%	
REACH	Compliant	
Indoor Air Comfort Gold	Eurofins certified product	
FloorScore	Certified	
Finnish M1	Certified	
AqBB/ABG	Pass	
Responsible Sourcing	BES 6001	Excellent

Acoustic Performance

Impact Sound Reduction	ISO 10140-3	4dB
------------------------	-------------	-----

Maintenance Performance

Resistance to Chemicals	ISO 26987 (EN 423)	Good
	ASTM F925	Good

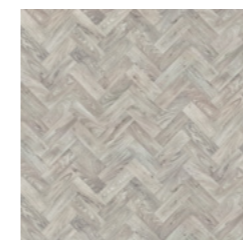
All Polyflor commercial sheet vinyl ranges provide a continuous, impervious and hygienic flooring solution which can be confidently cleaned in accordance with recommended maintenance procedures and approved maintenance products. The implementation of an effective cleaning regime is the most important defence against infection.

Hygiene

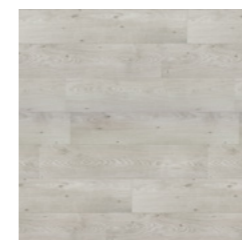
Bacterial Resistance	ISO 846 Part C	Does not favour growth
----------------------	----------------	------------------------

Sheet Size

Format	Size	Shades	Coverage per Roll
Sheet	2m x 20m	18	40m ²



Parish Oak Parquet 3106
plank size in sheet: 76.2 x 288.6mm
w/r 9841 LRV 32



Blanched Oak 3113
plank size in sheet: 200 x 1000mm
w/r 3113 LRV 42



Oslo Oak 3104
plank size in sheet: 167 x 1500mm
w/r 9829 LRV 32



Newport Oak 3109
plank size in sheet: 167 x 1500mm
w/r 9838 LRV 30



Grey Sawmill Oak 3101
plank size in sheet: 180 x 1000mm
w/r 3101 LRV 40



Rock Salt Oak 3103
plank size in sheet: 220 x 1500mm
w/r 3103 LRV 37



Alloyed Timber 3105
plank size in sheet: 167 x 1500mm
w/r 9841 LRV 24



Oiled Oak 2990
plank size in sheet: 167 x 1500mm
w/r 2990 LRV 35



Rural Deckwood 3102
plank size in sheet: 180 x 1000mm
w/r 3102 LRV 28



Eton Oak Parquet 3108
plank size in sheet: 76.2 x 288.6mm
w/r 9822 LRV 24



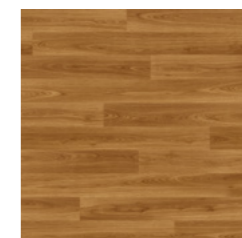
Classic Oak 3100
plank size in sheet: 167 x 1500mm
w/r 3330 LRV 29



Rustic Oak 3330
plank size in sheet: 84 x 332/664mm
w/r 3330 LRV 29



American Oak 3380
plank size in sheet: 100 x 1000mm
w/r 3380 LRV 36



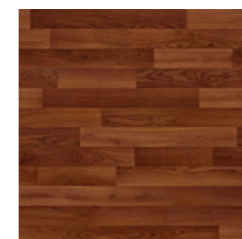
European Oak 3340
plank size in sheet: 100 x 1000mm
w/r 3340 LRV 21



French Walnut 3120
plank size in sheet: 167 x 1000mm
w/r 3120 LRV 17



Smoked Oak 3150
plank size in sheet: 167 x 1500mm
w/r 3150 LRV 14



Mahogany 3360
plank size in sheet: 84 x 332/664mm
w/r 3360 LRV 10



Brazilian Walnut 3990
plank size in sheet: 133 x 1000mm
w/r 3990 LRV 8

w/r - Weld Rod

LRV - Light Reflectance Value



Silentflor PUR

UKCA CE
BS EN 14041 EN 14041

Technical Specification

Product Format

Gauge	ISO 24346 (EN 428)	3.7mm
Wear Layer	ISO 24340 (EN 429)	0.65mm
Total Weight	ISO 23997 (EN 430)	2550g/m ²
Finish	PUR	

Performance Requirements

General Performance	ISO 11638 (EN 651) ASTM F1303	Conforms Type I, Class I, Class C Backing
Use Area	ISO 10874 (EN 685)	23, 34, 42
Slip Resistance	EN 13893	Class DS
	DIN 51130 / DIN EN 16165 Ann. B	R10
	AS 4586 ASTM D2047	R10 SCOF ≥ 0.5
Binder Content	ISO 10582	Type I
Abrasion Resistance	EN 651	Group T
	EN 13501-1 ASTM E648 CAN/ULC S102.2	Class Bfl-S1 Class 1 FSV < 300; SDV < 500
Static Electrical Propensity	EN 1815	≤ 2.0 kV Classified as 'antistatic'
	ASTM F1914 ASTM F970 (Modified) ISO 24343-1 (EN 433)	$\leq 0.005''$ $\leq 0.009''$ (750 psi) ≤ 0.20 mm
Castor Chair (continuous use)	ISO 4918 (EN 425)	Suitable
Dimensional Stability	ISO 23999 (EN 434)	$\leq 0.40\%$
Flexibility	ISO 24344 (EN 435)	(Method A) Pass 20mm \varnothing
	ASTM F137	0.25" Pass
Thermal Resistance	EN 12667	0.0525m ² K/W
Underfloor heating	Suitable, max 27°C	
Light Fastness	ISO 105-B02 (Method 3)	≥ 6
Furniture Leg	ISO 16581 (EN 424)	Pass Type 3 foot
Resistance to Light	ASTM F1515	$\Delta E \leq 8.0$ - Meets
Resistance to Heat	ASTM F1514	$\Delta E \leq 8.0$ - Meets

Sustainability

BRE Green Guide	A+ ENP 415
Recyclable	100%
Recycled Content	10%
REACH	Compliant
Indoor Air Comfort Gold	Eurofins certified product
FloorScore	Certified
Finnish M1	Certified
AqBB/ABG	Pass
Responsible Sourcing	BES 6001 Excellent

Acoustic Performance

Impact Sound Reduction	ISO 10140-3	19dB
Sound Transmission Coefficient	ASTM E90/492	STC 56
Impact Insulation Class	ASTM E90/492	IIC 57

Maintenance Performance

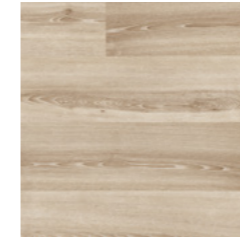
Resistance to Chemicals	ISO 26987 (EN 423)	Good
	ASTM F925	Good

All Polyflor commercial sheet vinyl ranges provide a continuous, impervious and hygienic flooring solution which can be confidently cleaned in accordance with recommended maintenance procedures and approved maintenance products. The implementation of an effective cleaning regime is the most important defence against infection.

Sheet Size

Format	Size	Shades	Coverage per Roll
Sheet	2m x 20m	36	40m ²

Silentflor PUR



Warm Limed Ash 9953
plank size in sheet: 166 x 1500mm
w/r 9832 LRV 34



Classic Limed Ash 9955
plank size in sheet: 166 x 1500mm
w/r 9833 LRV 49



Sun Bleached Oak 9952
plank size in sheet: 200 x 1500mm
w/r 9825 LRV 31



Blond Oak 9956
plank size in sheet: 167 x 1500mm
w/r 9820 LRV 28



Roasted Limed Ash 9954
plank size in sheet: 166 x 1500mm
w/r 9831 LRV 27



English Oak 9957
plank size in sheet: 200 x 1500mm
w/r 9823 LRV 24



Honey Oak 9959
plank size in sheet: 167 x 1500mm
w/r 9821 LRV 22



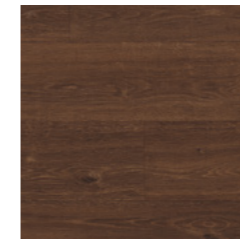
Toasted Oak 9960
plank size in sheet: 167 x 1500mm
w/r 9822 LRV 18



Reclaimed Chevron 9958
plank size in sheet: 120 x 700mm
w/r 9830 LRV 17



Bronzed Pine 9962
plank size in sheet: 166 x 1500mm
w/r 9835 LRV 14



Aged Oak 9961
plank size in sheet: 200 x 1500mm
w/r 9824 LRV 8



Smoked Oak 9963
plank size in sheet: 200 x 1500mm
w/r 9827 LRV 11



Silver Oak 9951
plank size in sheet: 200 x 1500mm
w/r 9826 LRV 28



Silvered Pine 9964
plank size in sheet: 166 x 1500mm
w/r 9836 LRV 17



Honey Beige 9985
NCS S 3005-Y50R
w/r 9869 LRV 29



Autumn Rain 9986
NCS S 5005-Y80R
w/r 9864 LRV 24

w/r - Weld Rod

LRV - Light Reflectance Value

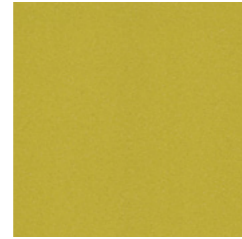
NCS - Natural Colour System



Burnt Orange 9981
NCS S 3040-Y40R
w/r 9848 LRV 24



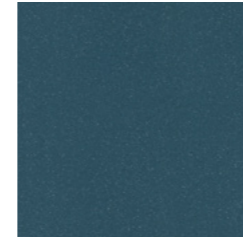
Flaxen 9979
NCS S 0560-Y
w/r 9849 LRV 44



Meadow 9980
NCS S 2050-G90Y
w/r 9850 LRV 32



Teal 9978
NCS S 6020-B70G
w/r 9851 LRV 11



Steel Blue 9977
NCS S 6020-B10G
w/r 9852 LRV 10



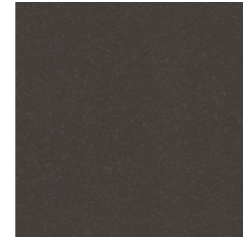
Moleskin 9975
NCS S 3005-Y20R
w/r 9841 LRV 28



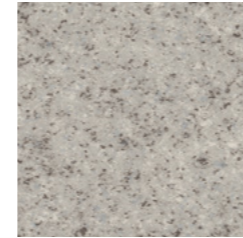
Storm 9973
NCS S 3502-B
w/r 9845 LRV 26



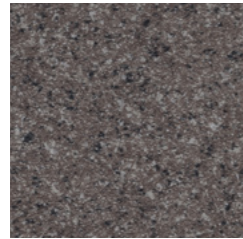
Taupe 9976
NCS S 7502-Y
w/r 9843 LRV 10



Jet 9974
NCS S 8000-N
w/r 9842 LRV 8



Zinc 9982
NCS S 3500-N
w/r 9804 LRV 37



Onyx 9983
NCS S 7502-R
w/r 9805 LRV 14



Twilight 9984
NCS S 7005-Y20R
w/r 5086 LRV 14



Light Grey Concrete 9965
NCS S 3000-N
w/r 9858 LRV 40



Warm Concrete 9967
NCS S 3502-R
w/r 9855 LRV 25



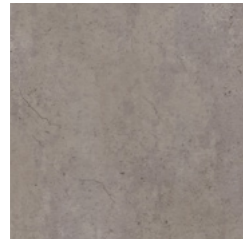
Cool Concrete 9966
NCS S 4500-N
w/r 9856 LRV 22



Dark Grey Concrete 9968
NCS S 6502-R
w/r 9857 LRV 13



Light Industrial Concrete 9969
NCS S 2500-N
w/r 9860 LRV 35



Dark Industrial Concrete 9970
NCS S 4502-R
w/r 9859 LRV 24



Copper Ornamental 9971
NCS S 5502-R
w/r 9861 LRV 19

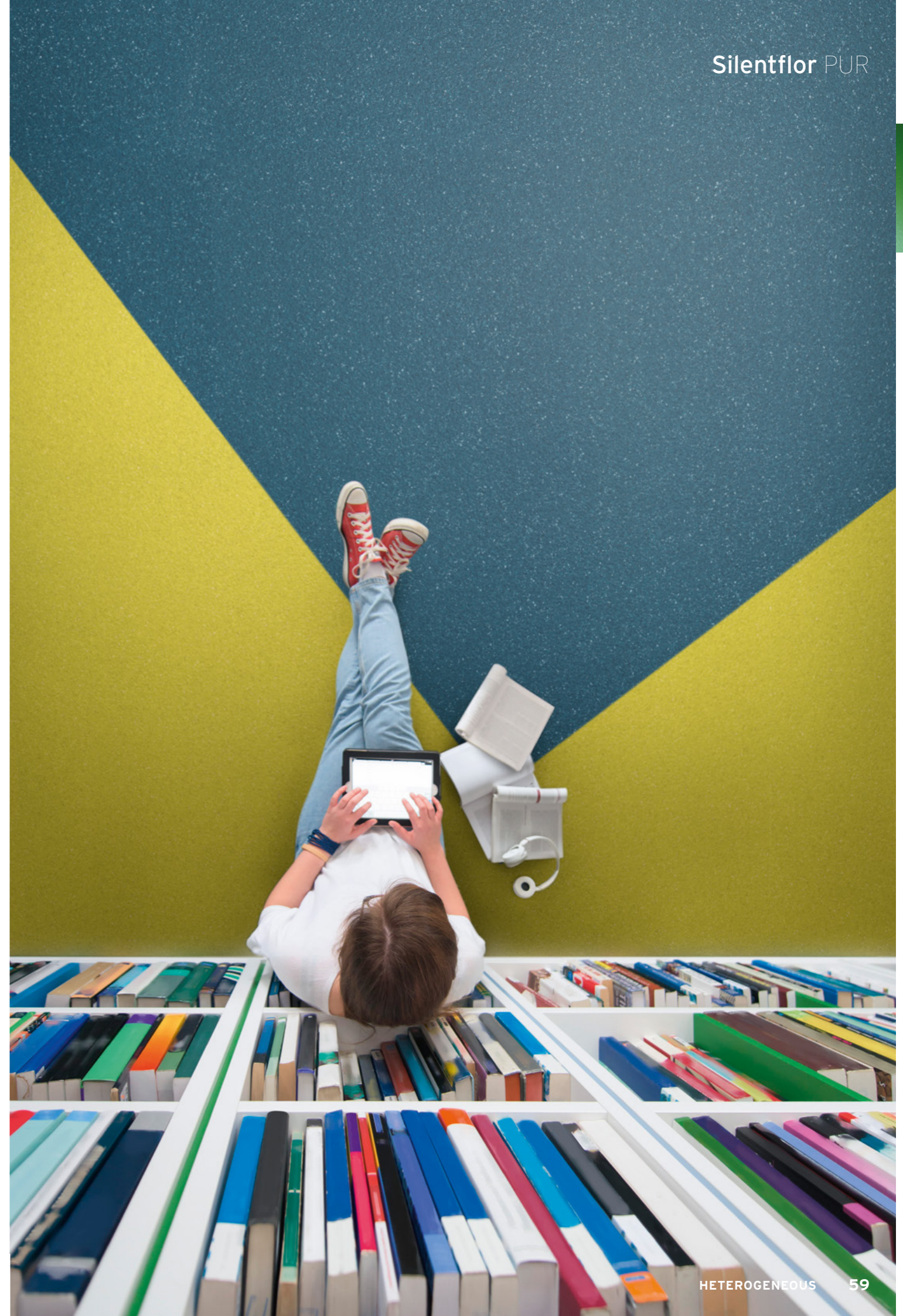


Onyx Ornamental 9972
NCS S 7000-N
w/r 9862 LRV 11

w/r - Weld Rod

LRV - Light Reflectance Value

NCS - Natural Colour System





Acoustix Forest fx PUR



Technical Specification

Product Format

Gauge	ISO 24346 (EN 428)	3.7mm
Wear Layer	ISO 24340 (EN 429)	0.65mm
Total Weight	ISO 23997 (EN 430)	2550g/m ²
Finish	PUR	

Performance Requirements

General Performance	ISO 11638 (EN 651) ASTM F1303	Conforms Type I, Class I, Class C Backing
Use Area	ISO 10874 (EN 685)	23, 34, 42
Slip Resistance	EN 13893	Class DS
	DIN 51130 /	R10
	DIN EN 16165 Ann. B	
	AS 4586	R10
Binder Content	ASTM D2047	SCOF ≥ 0.5
	ISO 10582	Type I
Abrasion Resistance	EN 651	Group T
Reaction to Fire	EN 13501-1	Class Bfl-S1
	ASTM E648	Class 1
	CAN/ULC S102.2	FSV < 300; SDV < 500
Static Electrical Propensity	EN 1815	≤ 2.0 kV Classified as 'antistatic'
Residual Indentation	ASTM F1914	≤ 0.005 "
	ASTM F970 (Modified)	≤ 0.009 " (750 psi)
	ISO 24343-1 (EN 433)	≤ 0.20 mm
Castor Chair (continuous use)	ISO 4918 (EN 425)	Suitable
Dimensional Stability	ISO 23999 (EN 434)	≤ 0.40 %
Flexibility	ISO 24344 (EN 435)	(Method A) Pass 20mm \emptyset
	ASTM F137	0.25" Pass
Thermal Resistance	EN 12667	0.0525m ² K/W
Underfloor Heating	Suitable, max 27°C	
Light Fastness	ISO 105-B02 (Method 3)	≥ 6
Resistance to Light	ASTM F1515	$\Delta E \leq 8.0$ - Meets
Resistance to Heat	ASTM F1514	$\Delta E \leq 8.0$ - Meets

Sustainability

BRE Green Guide	A+ ENP 415	
GreenTag	LCA Rate Silver Plus	GreenRate level A
Generic EN 15804 EPD	Available	
Recyclable	100%	
Recycled Content	10%	
REACH	Compliant	
Indoor Air Comfort Gold	Eurofins certified product	
FloorScore	Certified	
Finnish M1	Certified	
AqBB/ABG	Pass	
Responsible Sourcing	BES 6001	Excellent

Acoustic Performance

Impact Sound Reduction	ISO 10140-3	19dB
Sound Transmission Coefficient	ASTM E90/492	STC 56
Impact Insulation Class	ASTM E90/492	IIC 57

Maintenance Performance

Resistance to Chemicals	ISO 26987 (EN 423)	Good
	ASTM F925	Good

All Polyflor commercial sheet vinyl ranges provide a continuous, impervious and hygienic flooring solution which can be confidently cleaned in accordance with recommended maintenance procedures and approved maintenance products. The implementation of an effective cleaning regime is the most important defence against infection.

Sheet Size

Format	Size	Shades	Coverage per Roll
Sheet	2m x 20m	8	40m ²

Acoustix Forest fx PUR



Warm Beech 3295
plank size in sheet: 100 x 500mm
w/r 3290 LRV 34



American Oak 3385
plank size in sheet: 100 x 1000mm
w/r 3380 LRV 33



Rustic Oak 3335
plank size in sheet: 84 x 332/664mm
w/r 3330 LRV 25



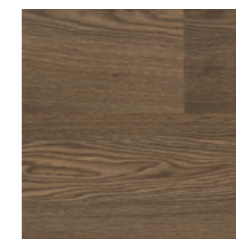
European Oak 3345
plank size in sheet: 100 x 1000mm
w/r 3340 LRV 20



Oiled Oak 3095
plank size in sheet: 167 x 1500mm
w/r 2990 LRV 35



Classic Oak 3125
plank size in sheet: 167 x 1500mm
w/r 3330 LRV 30



Smoked Oak 3155
plank size in sheet: 167 x 1500mm
w/r 3150 LRV 14



Classic Walnut 3235
plank size in sheet: 167 x 1000mm
w/r 3230 LRV 13

w/r - Weld Rod

LRV - Light Reflectance Value



Polysafe Wood fx Acoustix PUR



Technical Specification

Product Format

Gauge	ISO 24346 (EN 428)	3.7mm
Wear Layer	ISO 24340 (EN 429)	0.65mm
Total Weight	ISO 23997 (EN 430)	2670g/m ²
Finish	PUR	

Performance Requirements

General Performance	ISO 11638 (EN 651)	Conforms
Use Area	ISO 10874 (EN 685)	23, 34, 42
Enhanced Slip Resistance	EN 13845	ESf
	AS 4586	R10
	RRL Pendulum Test	≥36 (wet test - 4S Rubber / Slider 96)
Abrasion Resistance	Surface Roughness	Rz ≥20µm
	EN 13845	50,000 cycles
Reaction to Fire	EN 13501-1	Class Bfl-S1
	ASTM E648	Class 1
	CAN/ULC S102.2	FSV < 300; SDV < 500
Static Electrical Propensity	EN 1815	≤2.0kV Classified as 'antistatic'
Residual Indentation	ISO 24343-1	≤0.20mm

Sheet Size

Format	Size	Shades	Coverage per Roll
Sheet	2m x 20m	8	40m ²

Sustainability

BRE Green Guide	A+ ENP 415	
GreenTag	LCA Rate Silver Plus	GreenRate level A
Generic EN 15804 EPD	Available	
Recyclable	100%	
Recycled Content	10%	
REACH	Compliant	
Indoor Air Comfort Gold	Eurofins certified product	
FloorScore	Certified	
AqBB/ABG	Pass	
Responsible Sourcing	BES 6001	Excellent

Acoustic Performance

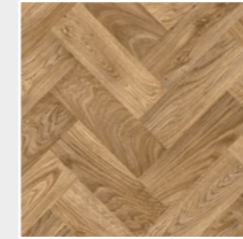
Impact Sound Reduction	ISO 10140-3	19dB
------------------------	-------------	------

Maintenance Performance

Resistance to Chemicals	ISO 26987 (EN 423)	Good
Alco Hand Gels	Compatible for use with most commonly used alco-based hand gels	
Steam Cleaning	Suitable for steam cleaning on a periodic basis	

All Polyflor commercial sheet vinyl ranges provide a continuous, impervious and hygienic flooring solution which can be confidently cleaned in accordance with recommended maintenance procedures and approved maintenance products. The implementation of an effective cleaning regime is the most important defence against infection.

PARQUET DESIGNS



Eton Oak Parquet 3399
plank size in sheet: 76.2 x 288.6mm
w/r 9822 LRV 24



Parish Oak Parquet 3398
plank size in sheet: 76.2 x 288.6mm
w/r 9841 LRV 32



American Oak 3382
plank size in sheet: 100 x 1000mm
w/r 3380 LRV 37



Sun Bleached Oak 3384
plank size in sheet: 200 x 1500mm
w/r 3372 LRV 31



Rustic Oak 3332
plank size in sheet: 83 x 333/666mm
w/r 3330 LRV 26



Silver Oak 3352
plank size in sheet: 83 x 333/666mm
w/r 3237 LRV 23



European Oak 3342
plank size in sheet: 100 x 1000mm
w/r 3340 LRV 23



Aged Oak 3389
plank size in sheet: 200 x 1500mm
w/r 9824 LRV 9

w/r - Weld Rod

LRV - Light Reflectance Value



Architex PUR

Architex PUR

Technical Specification

Product Format

Gauge	ISO 24346 (EN 428)	3.5mm
Wear Layer	ISO 24340 (EN 429)	0.35mm
Total Weight	ISO 23997 (EN 430)	2150g/m ²
Finish	PUR	

Performance Requirements

General Performance	ISO 26986 (EN 653)	Conforms
Use Area	ISO 10874 (EN 685)	23, 32
Slip Resistance	EN 13893	Class DS
	DIN 51130 / DIN EN 16165 Ann. B	R10
Abrasion Resistance	EN 653	Group T
Reaction to Fire	EN 13501-1	Class Bfl-S1
Static Electrical Propensity	EN 1815	≤2.0kV Classified as 'antistatic'
Residual Indentation	ISO 24343-1 (EN 433)	≤0.20mm
Castor Chair (continuous use)	ISO 4918 (EN 425)	Suitable
Furniture Leg	ISO 16581 (EN 424)	Conforms
Dimensional Stability	ISO 23999 (EN 434)	≤0.40%
Flexibility	ISO 24344 (EN 435)	(Method A) Pass 20mm ø
Thermal Resistance	EN 12667	0.0542m ² K/W 0.542 Tog
Underfloor Heating	Suitable, max 27°C	
Light Fastness	ISO 105-B02 (Method 3)	≥6

Sustainability

BRE Green Guide	A+ Generic
Recyclable & Reusable	100%
REACH	Compliant
Indoor Air Comfort Gold	Eurofins certified product
FloorScore	Certified
AqBB/ABG	Pass

Acoustic Performance

Impact Sound Reduction	ISO 10140-3	19dB
------------------------	-------------	------

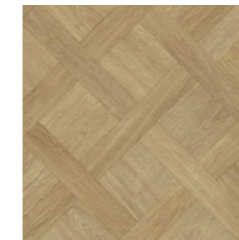
Maintenance Performance

Resistance to Chemicals	ISO 26987 (EN 423)	Good
-------------------------	--------------------	------

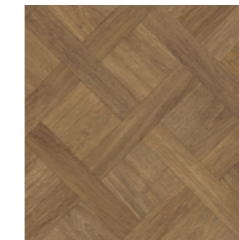
All Polyflor commercial sheet vinyl ranges provide a continuous, impervious and hygienic flooring solution which can be confidently cleaned in accordance with recommended maintenance procedures and approved maintenance products. The implementation of an effective cleaning regime is the most important defence against infection.

Sheet Sizes

Format	Size	Shades	Coverage per Roll
Sheet	4m x 20-25m	18	80-100m ²
	3m x 20-25m	18	60-75m ²
	2m x 20-25m	18	40-50m ²



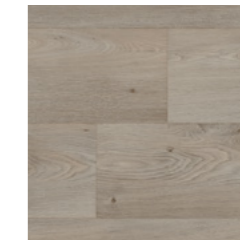
Oxford Basket Weave 3407
plank size in sheet: 56-120 x 120-297mm
LRV 31



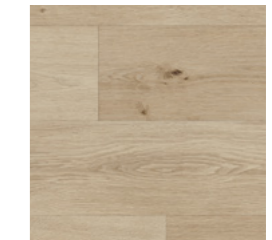
Warwick Basket Weave 3408
plank size in sheet: 56-120 x 120-297mm
LRV 19



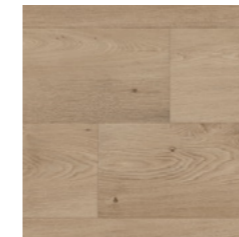
Lake House Oak 3403
plank size in sheet: 200 x 1500mm
LRV 33



Dorchester Oak 3406
plank size in sheet: 200 x 1000mm
LRV 30



Rose Hill Oak 3401
plank size in sheet: 200 x 1500mm
LRV 38



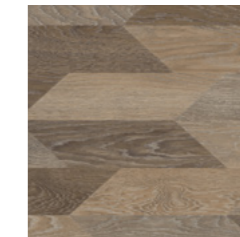
Bowery Oak 3405
plank size in sheet: 200 x 1000mm
LRV 32



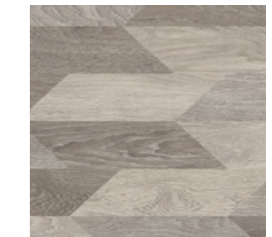
Alden Oak 3402
plank size in sheet: 200 x 1500mm
LRV 25



Marlborough Oak 3404
plank size in sheet: 200 x 1500mm
LRV 24



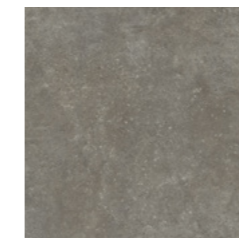
Tan Bowman Oak 3409
plank size in sheet: 100 x 333mm
LRV 23



Grey Bowman Oak 3411
plank size in sheet: 100 x 333mm
LRV 35



Portland Cement 3416
LRV 46



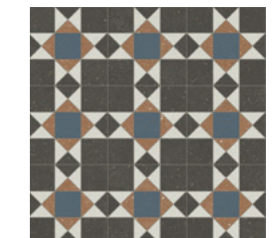
Hudson Cement 3417
LRV 21



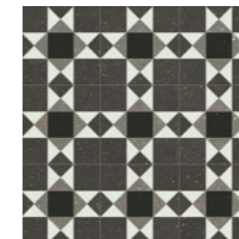
Fresh Persian Loom 3412
plank size in sheet: 330 x 330mm
LRV 55



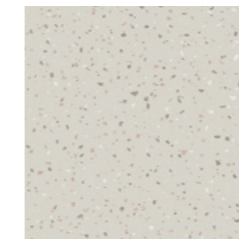
Rich Persian Loom 3413
plank size in sheet: 330 x 330mm
LRV 41



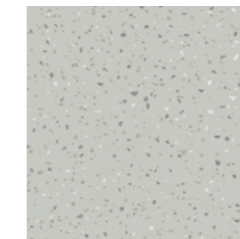
Parlour Tile 3414
LRV 26*



Heritage Tile 3415
LRV 23*



Vittoria Terrazzo 3418
LRV 52



Fresco Terrazzo 3419
LRV 49

LRV - Light Reflectance Value

*LRV may vary due to high shade variation.

HOMOGENEOUS
 HETEROGENEOUS
 SAFETY
 LUXURY VINYL TILES
 LOOSE LAY
 INTERWOVEN VINYL TILES
 ESD
 SPORT
 SEMI-FLEXIBLE TILES
 RUBBER
 WALL CLADDING

Technical Specification

Product Format

Gauge	ISO 24346 (EN 428)	3.0mm
Wear Layer	ISO 24340 (EN 429)	0.30mm
Total Weight	ISO 23997 (EN 430)	1700g/m ²
Finish	PUR	

Performance Requirements

General Performance	ISO 26986 (EN 653)	Conforms
Use Area	ISO 10874 (EN 685)	23, 31
Slip Resistance	EN 13893	Class DS
	DIN 51130 / DIN EN 16165 Ann. B	R10
Abrasion Resistance	EN 653	Group T
Reaction to Fire	EN 13501-1	Class Bfl-S1
Static Electrical Propensity	EN 1815	≤2.0kV Classified as 'antistatic'
Residual Indentation	ISO 24343-1 (EN 433)	≤0.35mm
Castor Chair (continuous use)	ISO 4918 (EN 425)	Suitable
Furniture Leg	ISO 16581 (EN 424)	Pass Type 3 foot
Dimensional Stability	ISO 23999 (EN 434)	≤0.40%
Flexibility	ISO 24344 (EN 435)	(Method A) Pass 20mm ø
Thermal Resistance	EN 12667	0.0541m ² K/W 0.541 Tog
Underfloor Heating	Suitable, max 27°C	
Light Fastness	ISO 105-B02 (Method 3)	≥6

Sustainability

BRE Green Guide	A+ ENP 415	
Generic EN 15804 EPD	Available	
Recyclable & Reusable	100%	
Recycled Content	10%	
REACH	Compliant	
Indoor Air Comfort Gold	Eurofins certified product	
FloorScore	Certified	
AqBB/ABG	Pass	
Responsible Sourcing	BES 6001	Excellent

Acoustic Performance

Impact Sound Reduction	ISO 10140-3	17dB
------------------------	-------------	------

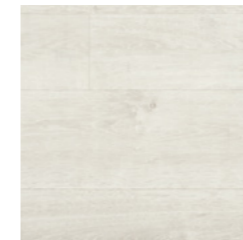
Maintenance Performance

Resistance to Chemicals	ISO 26987 (EN 423)	Good
-------------------------	--------------------	------

All Polyflor commercial sheet vinyl ranges provide a continuous, impervious and hygienic flooring solution which can be confidently cleaned in accordance with recommended maintenance procedures and approved maintenance products. The implementation of an effective cleaning regime is the most important defence against infection.

Sheet Sizes

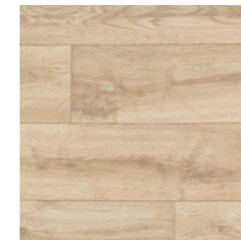
Format	Size	Shades	Coverage per Roll
Sheet	4m x 20-25m	18	80-100m ²
	3m x 20-25m	18	60-75m ²
	2m x 20-25m	18	40-50m ²



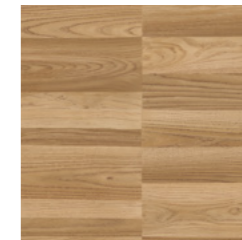
Chalk White Oak 2141
plank size in sheet: 200 x 1500mm
LRV 57



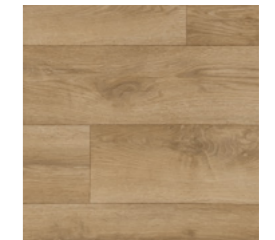
Honey Limed Ash 2143
plank size in sheet: 166 x 1500mm
LRV 41



California Oak 2145
plank size in sheet: 166 x 1500mm
LRV 41



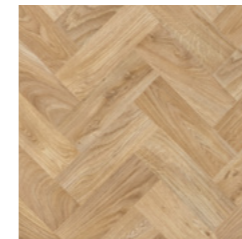
Columned Ash 2140
plank size in sheet: 40-120 x 500mm
LRV 25



Cornish Oak 2146
plank size in sheet: 166 x 1500mm
LRV 28



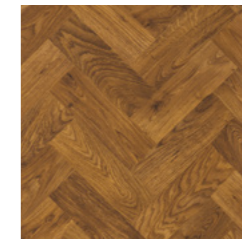
Sicilian Oak 2147
plank size in sheet: 166 x 1500mm
LRV 28



Laurel Oak Parquet 2136
plank size in sheet: 76.2 x 228.6mm
LRV 33



English Oak Parquet 2137
plank size in sheet: 76.2 x 228.6mm
LRV 19



Rich Oak Parquet 2138
plank size in sheet: 76.2 x 228.6mm
LRV 15



Smokehouse Herringbone 2139
plank size in sheet: 140 x 710mm
LRV 17



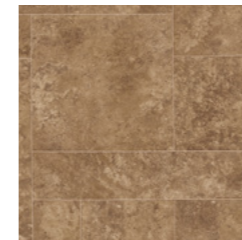
Platinum Oak 2142
plank size in sheet: 166 x 1500mm
LRV 32



Nero Oak 2144
plank size in sheet: 125 x 1000mm
LRV 7



Cottage Paving 2148
plank size in sheet: 100-500x100-500mm
LRV 39



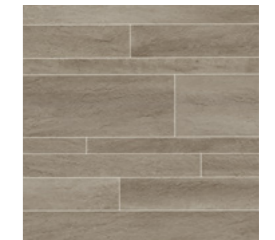
Tuscan Paving 2149
plank size in sheet: 100-500x100-500mm
LRV 21



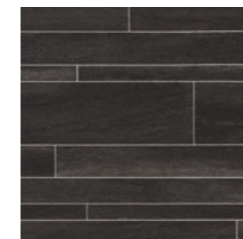
Barca Limestone 2150
plank size in sheet: 143 x 500 - 800mm
LRV 50



Manhattan Limestone 2151
plank size in sheet: 143 x 500 - 800mm
LRV 48



Quarried Slate 2152
plank size in sheet: 35-135 x 500-1000mm
LRV 27



Noir Slate 2153
plank size in sheet: 35-135 x 500-1000mm
LRV 8



Secura PUR



Secura PUR

Technical Specification

Product Format

Gauge	ISO 24346 (EN 428)	3.0mm
Wear Layer	ISO 24340 (EN 429)	0.35mm
Total Weight	ISO 23997 (EN 430)	1780g/m ²
Finish	PUR	

Performance Requirements

General Performance	ISO 26986 (EN 653)	Conforms
Use Area	ISO 10874 (EN 685)	23, 32, 41
Slip Resistance	EN 13893	Class DS
	DIN 51130 / DIN EN 16165 Ann. B	R10
Abrasion Resistance	EN 653	Group T
Reaction to Fire	EN 13501-1	Class Bfl-S1
Static Electrical Propensity	EN 1815	≤2.0kV Classified as 'antistatic'
Residual Indentation	ISO 24343-1 (EN 433)	≤0.20mm
Castor Chair (continuous use)	ISO 4918 (EN 425)	Suitable
Furniture Leg	ISO 16581 (EN 424)	Pass Type 3 foot
Dimensional Stability	ISO 23999 (EN 434)	≤0.40%
Flexibility	ISO 24344 (EN 435)	(Method A) Pass 20mm ø
Thermal Resistance	EN 12667	0.0525m ² K/W 0.525 Tog
Underfloor Heating	Suitable, max 27°C	
Light Fastness	ISO 105-B02 (Method 3)	≥6

Sheet Sizes

Format	Size	Shades	Coverage per Roll
Sheet	4m x 20-25m	18	80-100m ²
	3m x 20-25m	18	60-75m ²
	2m x 20-25m	18	40-50m ²

Sustainability

BRE Green Guide	A+ ENP 415
Generic EN 15804 EPD	Available
Recyclable & Reusable	100%
Recycled Content	10%
REACH	Compliant
Indoor Air Comfort Gold	Eurofins certified product
FloorScore	Certified
AqBB/ABG	Pass
Responsible Sourcing	BES 6001 Excellent

Acoustic Performance

Impact Sound Reduction	ISO 10140-3	19dB
------------------------	-------------	------

Maintenance Performance

Resistance to Chemicals ISO 26987 (EN 423) Good

All Polyflor commercial sheet vinyl ranges provide a continuous, impervious and hygienic flooring solution which can be confidently cleaned in accordance with recommended maintenance procedures and approved maintenance products. The implementation of an effective cleaning regime is the most important defence against infection.



Oakland Parquet 2167
plank size in sheet: 88 x 700mm
LRV 38



Grey Oak Parquet 2168
plank size in sheet: 88 x 700mm
LRV 37



White Limed Ash 2160
plank size in sheet: 166 x 1500mm
LRV 57



Coastal Oak 2159
plank size in sheet: 200 x 1500mm
LRV 37



Sterling Oak 2161
plank size in sheet: 200 x 1000mm
LRV 40



Blond Oak 2127
plank size in sheet: 200 x 1500mm
LRV 42



Golden Oak 2128
plank size in sheet: 62.5 x 500-1000mm
LRV 37



Wheatfield Oak 2163
plank size in sheet: 167 x 1500mm
LRV 39



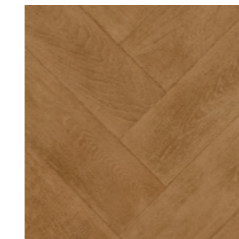
Natural Oak 2126
plank size in sheet: 200 x 1000mm
LRV 32



Honey Blushed Oak 2162
plank size in sheet: 200 x 1500mm
LRV 30



Country Oak 2130
plank size in sheet: 200 x 1500mm
LRV 20



Antique Herringbone 2129
plank size in sheet: 140 x 710mm
LRV 20



Ebony 2135
plank size in sheet: 100-150 x 1000mm
LRV 12



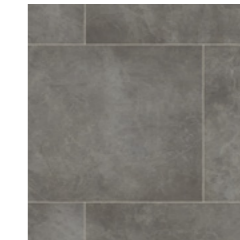
Limestone 2111
plank size in sheet: 333 x 500mm
LRV 55



Powdered Concrete 2164
NCS S 3000-N
LRV 40



Polished Concrete 2118
NCS S 5502-Y
LRV 23



Plymouth Slate 2165
plank size in sheet: 333 x 500mm
LRV 18



Black Slate 2114
plank size in sheet: 333 x 500mm
LRV 8

LRV - Light Reflectance Value

NCS - Natural Colour System

HOMOGENEOUS
HETEROGENEOUS
SAFETY
LUXURY VINYL TILES
LOOSE LAY
INTERWOVEN VINYL TILES
ESD
SPORT
SEMI-FLEXIBLE TILES
RUBBER
WALL CLADDING



Acoustifoam

UKCA CE
BS EN 14041 EN 14041

Technical Specification

Product Format

Gauge	ISO 24346 (EN 428)	2mm
Total Weight	ISO 23997 (EN 430)	680g/m ²

Performance Requirements

Reaction to Fire*	EN 13501-1	Class Bfl-S1 Class Cfl-S1 (when laid underneath Polyflor Heterogeneous vinyl)
-------------------	------------	--

Sustainability

Recyclable	100%
------------	------

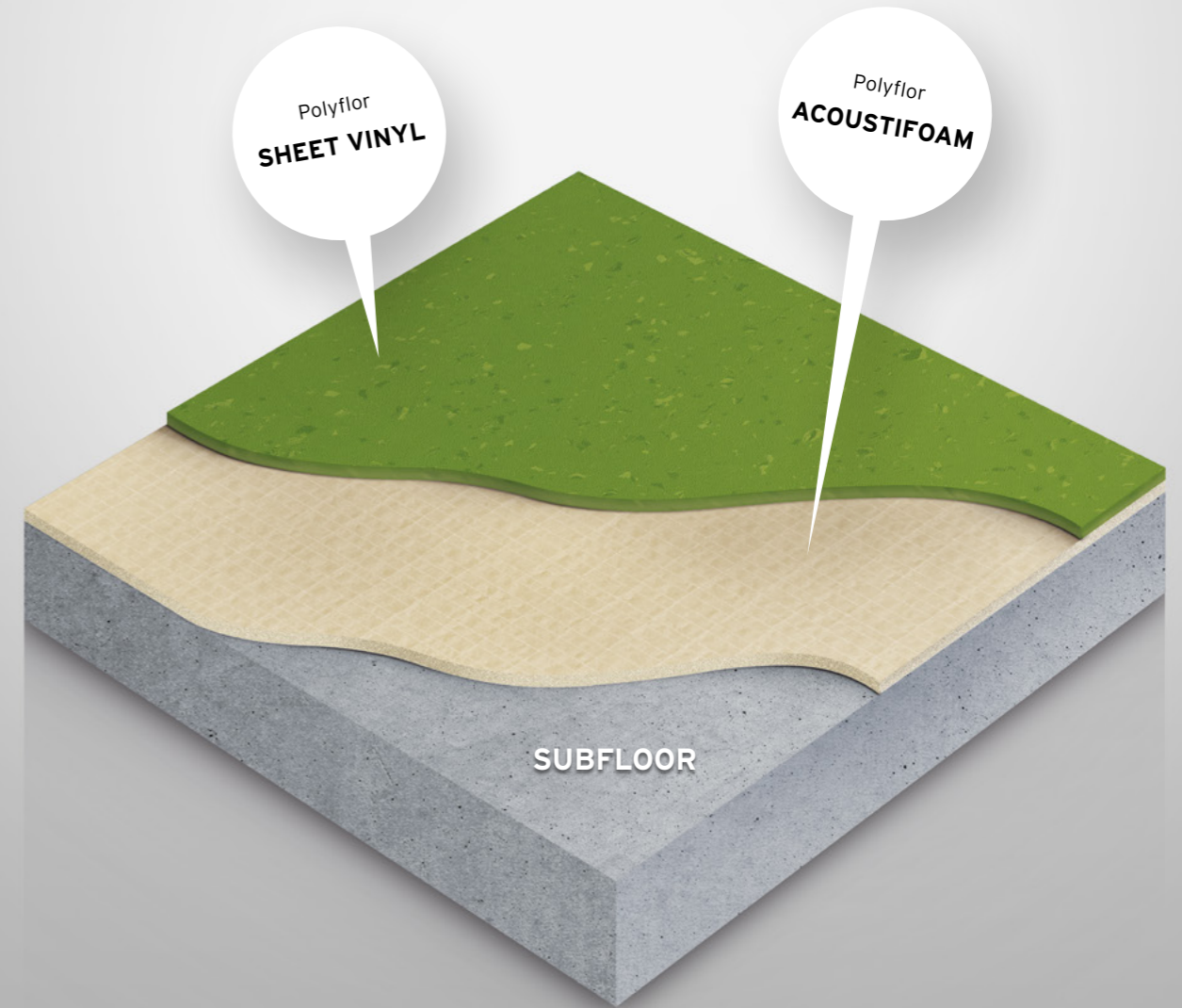
Acoustic Performance

Impact Sound Reduction	ISO 10140-3	2mm Polyflor Vinyl with Acoustifoam: 19dB
------------------------	-------------	---

Sheet Size

Format	Size	Coverage per Roll
Sheet	2m x 20m	40m ²

*Figures based on Acoustifoam laid underneath Forest fx, Pearlazzo PUR, Prestige PUR, Polysafe Verona PUR and Polysafe Standard PUR.



Impact Sound Reduction of

19dB

Polyflor's Acoustifoam is closed cell PVC foam backing sheet which significantly reduces impact sound. Designed to be installed beneath standard Polyflor vinyl to achieve an impact sound reduction level of 19dB. Ideal for use in hospitals, schools, high rise buildings and other locations where noise reduction is required. Acoustifoam allows an expansive choice of colours, styles and performance characteristics when paired with 2mm Polyflor Vinyl.