

High-design, loose lay floor coverings designed to minimise disruption and downtime. Available in sheet, tile and plank format, adhesive-free ranges can be installed over existing sub floors and can promote excellent indoor air quality. Suitable for use in commercial and residential interiors.

## PLANKS & TILES

Expona Simplay PUR 164

## SHEET

Polysafe QuickLay PUR 168

Architex PUR 170

Designatex PUR 172

Secura PUR 174

## INTERLOCKING

Expona EnCore Rigid Loc PUR 176

Camaro Loc PUR 178

Camaro Rigid Core PUR 182

Vinyl LOC Underlay 184

TECHNICAL DATA	STANDARDS	Expona Simplay PUR	Polysafe QuickLay PUR	Architex PUR	Designatex PUR	Secura PUR	Expona EnCore Rigid Loc PUR	Camaro Loc PUR	Camaro Rigid Core PUR
----------------	-----------	--------------------	-----------------------	--------------	----------------	------------	-----------------------------	----------------	-----------------------

Product Format

Gauge	ISO 24346 (EN 428)	5.0mm	2.2mm	3.5mm	3.0mm	3.0mm	6.5mm	4.0mm	5.5mm
Wear Layer	ISO 24340 (EN 429)	0.70mm	-	0.35mm	0.30mm	0.35mm	0.55mm	0.30mm	0.30mm
Sheet Size	ISO 24341 (EN 426)	-	2m x 20m	4m x 20-25m 3m x 20-25m 2m x 20-25m	4m x 20-25m 3m x 20-25m 2m x 20-25m	4m x 20-25m 3m x 20-25m 2m x 20-25m	-	-	-
Plank Sizes	ISO 24342 (EN 427)	177.8mm x 1219.2mm 185mm x 1505mm	-	-	-	-	177.35mm x 1212.4mm 196.4mm x 1212.4mm	145.6mm x 907.6mm 177.4mm x 1212.4mm	101.6mm x 609.6mm 177.4mm x 1212.4mm
Tile Sizes	ISO 24342 (EN 427)	177.8mm x 1219.2mm 304.8mm x 609.6mm 600mm x 600mm 914.4mm x 914.4mm	-	-	-	-	-	298mm x 602.8mm	304.8mm x 609.6mm
Total Weight	ISO 23997 (EN 430)	8000g/m <sup>2</sup>	2700g/m <sup>2</sup>	2150g/m <sup>2</sup>	1700g/m <sup>2</sup>	1780g/m <sup>2</sup>	10,800g/m <sup>2</sup>	7025g/m <sup>2</sup>	8570g/m <sup>2</sup>
Finish		PUR	PUR	PUR	PUR	PUR	PUR	PUR	PUR

Performance Requirements

General Performance	ISO 26986 (EN 653)	-	-	Conforms	Conforms	Conforms	-	-	-
	ISO 10582 (EN 649)	Conforms	-	-	-	-	-	Conforms	-
	EN 16511	-	-	-	-	-	Conforms	-	Conforms
	EN 13845	-	Conforms	-	-	-	-	-	-
	ASTM F1303	-	Conforms	-	-	-	-	-	-
	ASTM F3621	-	-	-	-	-	-	Conforms	-
Use Area	ISO 10874 (EN 685)	23, 34, 43	23, 34, 43	23, 32	23, 31	23, 32, 41	23, 34	23, 31	23, 31
Slip Resistance	EN 13893	Class DS	-	Class DS	Class DS	Class DS	Class DS	Class DS	Class DS
	DIN 51130 / DIN EN 16165 Ann. B	R10	R11	R10	R10	R10	R10	R10	R10
	EN 13845	-	ESf	-	-	-	-	-	-
	RRL Pendulum Test	-	≥45 (wet test - 4S Rubber/Slider 96)	-	-	-	-	-	-
	Surface Roughness	-	Rz ≥20µm	-	-	-	-	-	-
Binder Content	ISO 10582	Type I	-	-	-	-	Type I	Type I	Type I
Abrasion Resistance	EN 649	Group T	Group T	-	-	-	Group T	Group T	-
	EN 653	-	-	Group T	Group T	Group T	-	-	-
	EN 13329 Annex E	-	-	-	-	-	≥ 4000 cycles, Type 1	-	-
	EN 13845	-	50,000 cycles	-	-	-	-	-	-
Reaction to Fire	EN 13501-1	Class Bfl-S1	Class Bfl-S1	Class Bfl-S1	Class Bfl-S1	Class Bfl-S1	Class Bfl-S1	Class Bfl-S1	Class Bfl-S1
	ASTM E648	-	Class 1	-	-	-	-	-	-
	CAN/ULC S102.2	FSV < 300; SDV < 500	FSV < 300; SDV < 500	-	-	-	FSV < 300; SDV < 500	-	FSV < 300; SDV < 500
Static Electrical Propensity	EN 1815	≤2.0kV Classified as 'antistatic'	≤2.0kV Classified as 'antistatic'	≤2.0kV Classified as 'antistatic'	≤2.0kV Classified as 'antistatic'	≤2.0kV Classified as 'antistatic'	-	≤2.0kV Classified as 'antistatic'	-
Residual Indentation	ISO 24343-1 (EN 433)	<0.10mm*	-	≤0.20mm	≤0.35mm	≤0.20mm	≤0.10mm	≤0.05mm*	≤0.10mm*
Castor Chair (continuous use)	ISO 4918 (EN 425)	Suitable	-	Suitable	Suitable	Suitable	Suitable	Suitable	Suitable

Sustainability

BRE Green Guide		A+ Generic	A+ Generic	A+ Generic	A+ ENP 415	A+ ENP 415	-	A+ Generic	-
Indoor Air Comfort Gold		Eurofins certified product	Eurofins certified product	Eurofins certified product	Eurofins certified product	Eurofins certified product	Eurofins certified product	Eurofins certified product	Eurofins certified product
FloorScore		Certified	Certified	Certified	Certified	Certified	Certified	Certified	Certified
Finnish M1		Certified	Certified	-	-	-	-	Certified	Certified
AgBB/ABG		Pass	Pass	Pass	Pass	Pass	Pass	Pass	Pass
Responsible Sourcing	BES 6001	-	-	-	Excellent	Excellent	-	Very Good	-
	SA 8000	-	-	-	-	-	Approved factory	Approved factory	Approved factory

Acoustic Performance

Impact Sound Reduction	ISO 10140-3	8dB	10dB	19dB	17dB	19dB	19dB	19dB**	18dB
------------------------	-------------	-----	------	------	------	------	------	--------	------

Maintenance Performance

Resistance to Chemicals	ISO 26987 (EN 423)	Good resistance	Good resistance	Good resistance	Good resistance	Good resistance	Good resistance	Good resistance	Good resistance
-------------------------	--------------------	-----------------	-----------------	-----------------	-----------------	-----------------	-----------------	-----------------	-----------------

Regular light maintenance is more cost-effective than periodic heavy maintenance and more beneficial to the floor covering.

\*Average test value from current production

\*\*Installed with Polyflor Vinyl LOC Underlay



# Expona Simplay PUR



## Technical Specification

### Product Format

Gauge	ISO 24346 (EN 428)	5.0mm
Wear Layer	ISO 24340 (EN 429)	0.70mm
Total Weight	ISO 23997 (EN 430)	8000g/m <sup>2</sup>
Finish	PUR	

### Performance Requirements

General Performance	ISO 10582 (EN 649) ASTM F1700	Conforms Class III Type A+B
Use Area	ISO 10874 (EN 685)	23, 34, 43
Slip Resistance	EN 13893	Class DS
	DIN 51130 / DIN EN 16165 Ann. B AS 4586	R10
Binder Content	ISO 10582	Type I
Abrasion Resistance	EN 649	Group T
Reaction to Fire	EN 13501-1	Class Bfl-S1
	ASTM E662	<450 Pass
	ASTM E648 CAN/ULC S102.2	Class 1 FSV < 300; SDV < 500
Static Electrical Propensity	EN 1815	<2.0kV Classified as 'antistatic'
Residual Indentation	ISO 24343-1 (EN 433)	<0.10mm*
	ASTM F970	≤0.005" @ 750psi
	ASTM F1914	≤0.005"
Castor Chair (continuous use)	ISO 4918 (EN 425)	Suitable
Dimensional Stability	ISO 23999 (EN 434)	≤0.10% max
	ASTM F2199	Pass
Flexibility	ASTM F137	1" - Pass

\*Average test value from current production.

## Plank & Tile Sizes

Format	Size	Shades	Quantity per Box	Coverage per Box
Plank	177.8mm x 1219.2mm	17	10	2.17m <sup>2</sup>
	185mm x 1505mm	8	8	2.23m <sup>2</sup>

### Performance Requirements (Continued)

Underfloor Heating	Suitable, max 270°C	
Light Fastness	ISO 105-B02 (Method 3)	>6
Resistance to Light	ASTM F1515	ΔE ≤ 8.0 - Meets
Resistance to Heat	ASTM F1514	ΔE ≤ 8.0 - Meets

### Sustainability

BRE Green Guide	A+ Generic	
Specific EN 15804 EPD	Available	
Recyclable & Reusable	100%	
Recycled Content	20%	
REACH	Compliant	
Indoor Air Comfort Gold	Eurofins certified product	
FloorScore	Certified	
Finnish M1	Certified	
AgBB/ABG	Pass	

### Acoustic Performance

Impact Sound Reduction	ISO 10140-3	8dB
Sound Transmission Coefficient	ASTM E90/492	STC 55
Impact Insulation Class	ASTM E90/492	IIC 46

### Maintenance Performance

Resistance to Chemicals	ISO 26987 (EN 423)	Good
	ASTM F925	Good

Regular light maintenance is more cost-effective than periodic heavy maintenance and more beneficial to the floor covering.

Format	Size	Shades	Quantity per Box	Coverage per Box
Tile	177.8mm x 1219.2mm	4	10	2.17m <sup>2</sup>
	304.8mm x 609.6mm	2	10	1.86m <sup>2</sup>
	600mm x 600mm	6	6	2.16m <sup>2</sup>
	914.4mm x 914.4mm	3	4	3.34m <sup>2</sup>

177.8mm x 1219.2mm  
7" x 48"



White Ash **2574** LRV 56



White Rustic Pine **2513** LRV 41



Natural Wild Oak **2571** LRV 35



Grey Country Oak **2506** LRV 40



Natural Rustic Pine **2514** LRV 22



Honey Wild Oak **2572** LRV 26



Blond Country Oak **2507** LRV 36



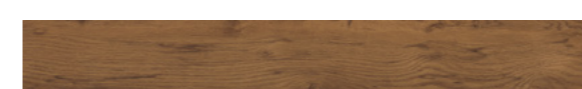
American Oak **2503** LRV 34



Light Cherry **2501** LRV 26



Natural Ash **2511** LRV 22



Brown Wild Oak **2570** LRV 12



Rich Walnut **2504** LRV 6



Dark Country Oak **2505** LRV 11

# Expona Simplay PUR



Grey Ash **2512** LRV 28



Light Grey Finline **2509** LRV 23



Dark Grey Finline **2510** LRV 12



Black Ash **2573** LRV 7

185mm x 1505mm  
7.25" x 59.25"



White Vintage Wood **2577** LRV 50



Beige Vintage Wood **2578** LRV 40



Natural Weathered Wood **2575** LRV 34



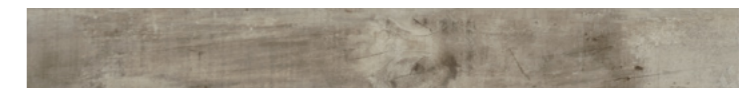
Light Classic Oak **2520** LRV 20



Medium Classic Oak **2521** LRV 20



Brown Mystique Wood **2519** LRV 9



Grey Weathered Wood **2576** LRV 25



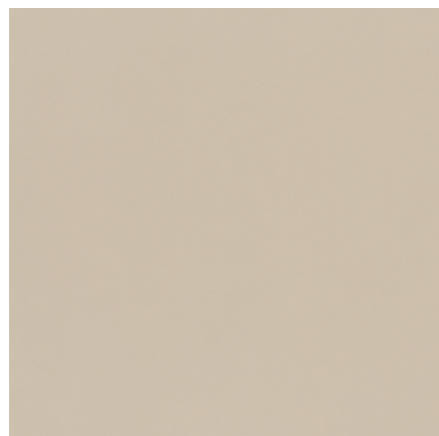
Grey Mystique Wood **2518** LRV 16

LRV - Light Reflectance Value

Bevelled Edges

Colour/Pattern Variation

914.4mm x 914.4mm  
36" x 36"



Beige Mono **2580**  
LRV 46



Light Mono **2579**  
LRV 51



Charcoal Mono **2581**  
LRV 9

177.8mm x 1219.2mm  
7" x 48"



Cold Cracked Concrete **2585**  
LRV 37



Warm Cracked Concrete **2584**  
LRV 34

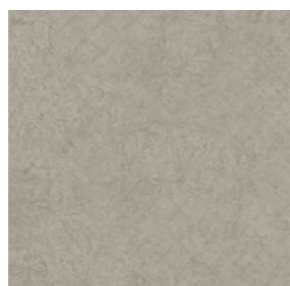
600mm x 600mm  
23.6" x 23.6"



Light Grey Concrete **2567**  
LRV 34



Cold Grey Concrete **2566**  
LRV 18



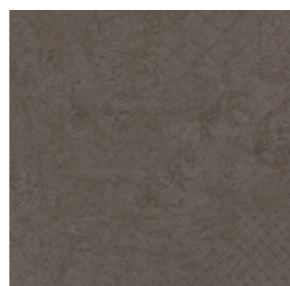
Light Grey Ornamental **2586**  
LRV 33



Warm Grey Concrete **2568**  
LRV 23



Dark Grey Concrete **2569**  
LRV 13

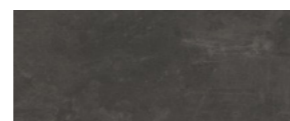


Dark Grey Ornamental **2587**  
LRV 13

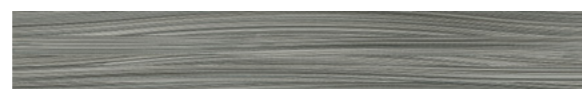
304.8mm x 609.6mm  
12" x 24"



Light Marble **2583**  
LRV 50



Black Slate **2582**  
LRV 9



Blue Textile **2589**  
LRV 22



Taupe Textile **2588**  
LRV 22

LRV - Light Reflectance Value

Bevelled Edges

Colour/Pattern Variation





# Polysafe QuickLay PUR

UKCA CE  
BS EN 14041 EN 14041

## Technical Specification

### Product Format

Gauge	ISO 24346 (EN 428)	2.2mm
Total Weight	ISO 23997 (EN 430)	2700g/m <sup>2</sup>
Finish		PUR

### Performance Requirements

General Performance	EN 13845	Conforms
	ASTM F1303	Conforms
Use Area	ISO 10874 (EN 685)	23, 34, 43
	EN 13845	ESf
Enhanced Slip Resistance	AS 4586 Appendix A	P4
	AS 4586 Appendix D	R11
	RRL Pendulum Test	≥45 (wet test - 4S Rubber / Slider 96)
	DIN 51130 / DIN EN 16165 Ann. B	R11
Surface Roughness	ASTM D2047	Rz ≥20µm SCOF ≥0.8
	EN 13845	50,000 cycles
Abrasion Resistance	EN 13893	Class DS
	EN 13501-1	Class Bfl-S1
Reaction to Fire	ASTM E648	Class 1
	Australian BCA Spec C1.10-3	Complies
	CAN/ULC S102.2	FSV < 300; SDV < 500
	AS ISO 9239-1	>8.0kW/m <sup>2</sup>
Static Electrical Propensity	EN 1815	≤2.0kV Classified as 'antistatic'
Residual Indentation	ISO 24343-1 (EN 433)	≤0.10mm
	ASTM F970 (Modified)	≤0.005" (750 psi)
Flexibility	ASTM F137	1.5" Pass
Resistance to Light	ASTM F1515	ΔE ≤ 8.0 - Meets
Resistance to Heat	ASTM F1514	ΔE ≤ 8.0 - Meets
Castor Chair	ISO 4918 (EN 425)	Suitable

### Sustainability

BRE Green Guide	A+ Generic
Generic EN 15804 EPD	Available
Recyclable & Reusable	100%
Recycled Content	Contains recycled material
REACH	Compliant
Indoor Air Comfort Gold	Eurofins certified product
FloorScore	Certified
Finnish M1	Certified
AqBB/ABG	Pass

### Acoustic Performance

Impact Sound Reduction	ISO 10140-3	10dB
------------------------	-------------	------

### Maintenance Performance

Resistance to Chemicals	ISO 26987 (EN 423)	Good
	ASTM F925	Good
Alco Hand Gels	Compatible for use with most commonly used alco-based hand gels	
Steam Cleaning	Suitable for steam cleaning on a periodic basis	

All Polyflor commercial sheet vinyl ranges provide a continuous, impervious and hygienic flooring solution which can be confidently cleaned in accordance with recommended maintenance procedures and approved maintenance products. The implementation of an effective cleaning regime is the most important defence against infection.

### Hygiene

Bacterial Resistance	ISO 846 Part C	Does not favour growth
----------------------	----------------	------------------------

## Sheet Size

Format	Size	Shades	Coverage per Roll
Sheet	2m x 20m	12	40m <sup>2</sup>

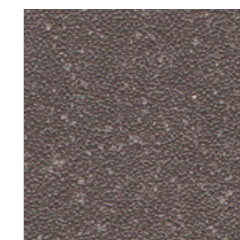
## Polysafe QuickLay PUR



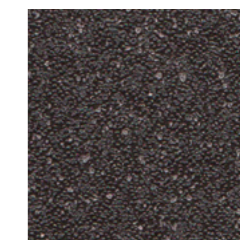
Vanilla **6253**  
NCS S 1502-Y w/r 5221 LRV 63



Mocha **6249**  
NCS S 3005-Y20R w/r 5212 LRV 43



Americano **6256**  
NCS S 6502-R w/r 5204 LRV 12



Rich Black **6252**  
NCS S 8000-N w/r 8640 LRV 7



Rock Salt **6251**  
NCS S 3000-N w/r 9858 LRV 43



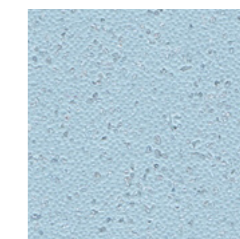
Monsoon **6248**  
NCS S 4500-N w/r 5764 LRV 25



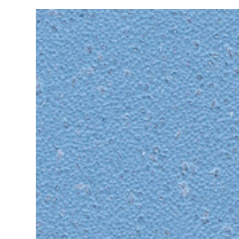
Glacier **6241**  
NCS S 2502-B w/r 5202 LRV 47



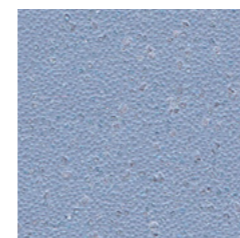
Pebble Shore **6250**  
NCS S 5500-N w/r 5233 LRV 21



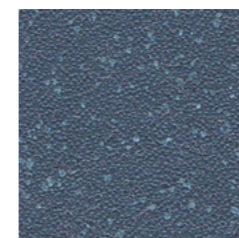
Sea Breeze **6254**  
NCS S 2020-B w/r 5205 LRV 44



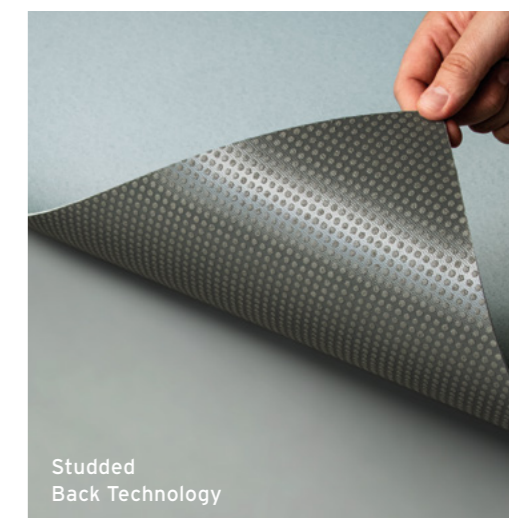
Azure **6255**  
NCS S 3030-R90B w/r 5206 LRV 31



Pacific Blue **6244**  
NCS S 3020-R90B w/r 5208 LRV 29



Midnight Blue **6245**  
NCS S 6010-R90B w/r 5207 LRV 12



Studded Back Technology

w/r - Weld Rod

LRV - Light Reflectance Value

NCS - Natural Colour System



## Technical Specification

### Product Format

Gauge	ISO 24346 (EN 428)	3.5mm
Wear Layer	ISO 24340 (EN 429)	0.35mm
Total Weight	ISO 23997 (EN 430)	2150g/m <sup>2</sup>
Finish	PUR	

### Performance Requirements

General Performance	ISO 26986 (EN 653)	Conforms
Use Area	ISO 10874 (EN 685)	23, 32
Slip Resistance	EN 13893	Class DS
	DIN 51130 / DIN EN 16165 Ann. B	R10
Abrasion Resistance	EN 653	Group T
Reaction to Fire	EN 13501-1	Class Bfl-S1
Static Electrical Propensity	EN 1815	≤2.0kV Classified as 'antistatic'
Residual Indentation	ISO 24343-1 (EN 433)	≤0.20mm
Castor Chair (continuous use)	ISO 4918 (EN 425)	Suitable
Furniture Leg	ISO 16581 (EN 424)	Conforms
Dimensional Stability	ISO 23999 (EN 434)	≤0.40%
Flexibility	ISO 24344 (EN 435)	(Method A) Pass 20mm ø
Thermal Resistance	EN 12667	0.0542m <sup>2</sup> K/W 0.542 Tog
Underfloor Heating	Suitable, max 27°C	
Light Fastness	ISO 105-B02 (Method 3)	≥6

### Sustainability

BRE Green Guide	A+ Generic
Recyclable & Reusable	100%
REACH	Compliant
Indoor Air Comfort Gold	Eurofins certified product
FloorScore	Certified
AqBB/ABG	Pass

### Acoustic Performance

Impact Sound Reduction	ISO 10140-3	19dB
------------------------	-------------	------

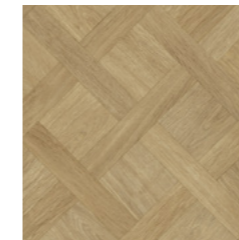
### Maintenance Performance

Resistance to Chemicals	ISO 26987 (EN 423)	Good
-------------------------	--------------------	------

All Polyflor commercial sheet vinyl ranges provide a continuous, impervious and hygienic flooring solution which can be confidently cleaned in accordance with recommended maintenance procedures and approved maintenance products. The implementation of an effective cleaning regime is the most important defence against infection.

## Sheet Sizes

Format	Size	Shades	Coverage per Roll
Sheet	4m x 20-25m	18	80-100m <sup>2</sup>
	3m x 20-25m	18	60-75m <sup>2</sup>
	2m x 20-25m	18	40-50m <sup>2</sup>



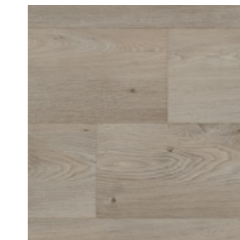
**Oxford Basket Weave 3407**  
plank size in sheet: 56-120 x 120-297mm  
LRV 31



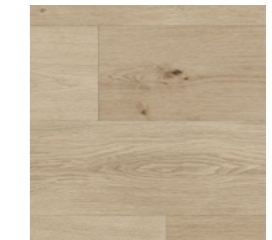
**Warwick Basket Weave 3408**  
plank size in sheet: 56-120 x 120-297mm  
LRV 19



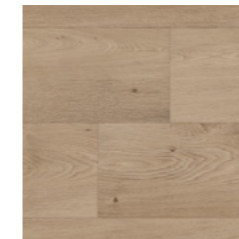
**Lake House Oak 3403**  
plank size in sheet: 200 x 1500mm  
LRV 33



**Dorchester Oak 3406**  
plank size in sheet: 200 x 1000mm  
LRV 30



**Rose Hill Oak 3401**  
plank size in sheet: 200 x 1500mm  
LRV 38



**Bowery Oak 3405**  
plank size in sheet: 200 x 1000mm  
LRV 32



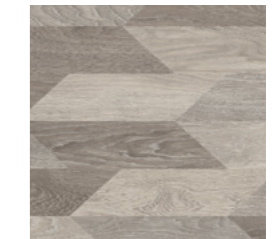
**Alden Oak 3402**  
plank size in sheet: 200 x 1500mm  
LRV 25



**Marlborough Oak 3404**  
plank size in sheet: 200 x 1500mm  
LRV 24



**Tan Bowman Oak 3409**  
plank size in sheet: 100 x 333mm  
LRV 23



**Grey Bowman Oak 3411**  
plank size in sheet: 100 x 333mm  
LRV 35



**Portland Cement 3416**  
LRV 46



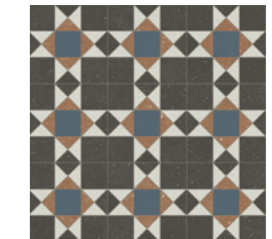
**Hudson Cement 3417**  
LRV 21



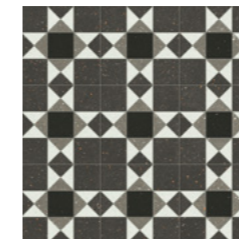
**Fresh Persian Loom 3412**  
plank size in sheet: 330 x 330mm  
LRV 55



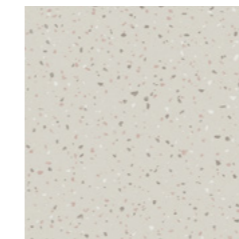
**Rich Persian Loom 3413**  
plank size in sheet: 330 x 330mm  
LRV 41



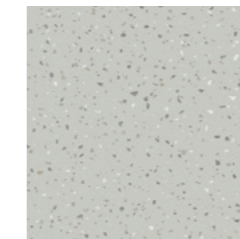
**Parlour Tile 3414**  
LRV 26\*



**Heritage Tile 3415**  
LRV 23\*



**Vittoria Terrazzo 3418**  
LRV 52



**Fresco Terrazzo 3419**  
LRV 49

LRV - Light Reflectance Value

\*LRV may vary due to high shade variation.

### Technical Specification

#### Product Format

Gauge	ISO 24346 (EN 428)	3.0mm
Wear Layer	ISO 24340 (EN 429)	0.30mm
Total Weight	ISO 23997 (EN 430)	1700g/m <sup>2</sup>
Finish	PUR	

#### Performance Requirements

General Performance	ISO 26986 (EN 653)	Conforms
Use Area	ISO 10874 (EN 685)	23, 31
Slip Resistance	EN 13893	Class DS
	DIN 51130 / DIN EN 16165 Ann. B	R10
Abrasion Resistance	EN 653	Group T
Reaction to Fire	EN 13501-1	Class Bfl-S1
Static Electrical Propensity	EN 1815	≤2.0kV Classified as 'antistatic'
Residual Indentation	ISO 24343-1 (EN 433)	≤0.35mm
Castor Chair (continuous use)	ISO 4918 (EN 425)	Suitable
Furniture Leg	ISO 16581 (EN 424)	Pass Type 3 foot
Dimensional Stability	ISO 23999 (EN 434)	≤0.40%
Flexibility	ISO 24344 (EN 435)	(Method A) Pass 20mm ø
Thermal Resistance	EN 12667	0.0541m <sup>2</sup> K/W 0.541 Tog
Underfloor Heating	Suitable, max 27°C	
Light Fastness	ISO 105-B02 (Method 3)	≥6

#### Sustainability

BRE Green Guide	A+ ENP 415	
Generic EN 15804 EPD	Available	
Recyclable & Reusable	100%	
Recycled Content	10%	
REACH	Compliant	
Indoor Air Comfort Gold	Eurofins certified product	
FloorScore	Certified	
AgBB/ABG	Pass	
Responsible Sourcing	BES 6001	Excellent

#### Acoustic Performance

Impact Sound Reduction	ISO 10140-3	17dB
------------------------	-------------	------

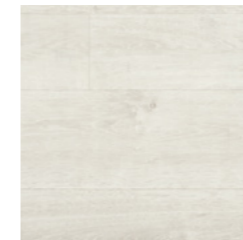
#### Maintenance Performance

Resistance to Chemicals	ISO 26987 (EN 423)	Good
-------------------------	--------------------	------

All Polyflor commercial sheet vinyl ranges provide a continuous, impervious and hygienic flooring solution which can be confidently cleaned in accordance with recommended maintenance procedures and approved maintenance products. The implementation of an effective cleaning regime is the most important defence against infection.

### Sheet Sizes

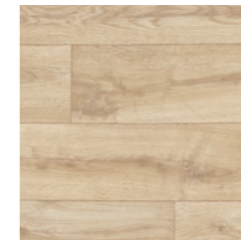
Format	Size	Shades	Coverage per Roll
Sheet	4m x 20-25m	18	80-100m <sup>2</sup>
	3m x 20-25m	18	60-75m <sup>2</sup>
	2m x 20-25m	18	40-50m <sup>2</sup>



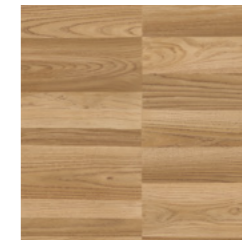
**Chalk White Oak 2141**  
plank size in sheet: 200 x 1500mm  
LRV 57



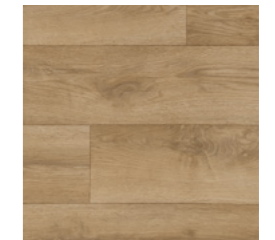
**Honey Limed Ash 2143**  
plank size in sheet: 166 x 1500mm  
LRV 41



**California Oak 2145**  
plank size in sheet: 166 x 1500mm  
LRV 41



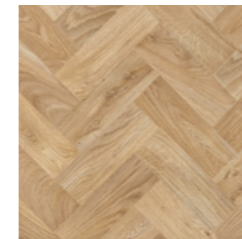
**Columned Ash 2140**  
plank size in sheet: 40-120 x 500mm  
LRV 25



**Cornish Oak 2146**  
plank size in sheet: 166 x 1500mm  
LRV 28



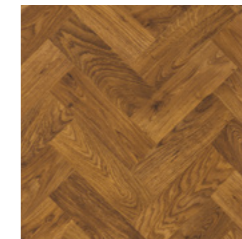
**Sicilian Oak 2147**  
plank size in sheet: 166 x 1500mm  
LRV 28



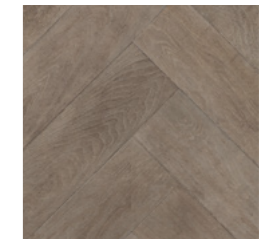
**Laurel Oak Parquet 2136**  
plank size in sheet: 76.2 x 228.6mm  
LRV 33



**English Oak Parquet 2137**  
plank size in sheet: 76.2 x 228.6mm  
LRV 19



**Rich Oak Parquet 2138**  
plank size in sheet: 76.2 x 228.6mm  
LRV 15



**Smokehouse Herringbone 2139**  
plank size in sheet: 140 x 710mm  
LRV 17



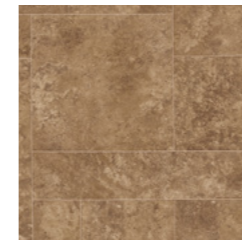
**Platinum Oak 2142**  
plank size in sheet: 166 x 1500mm  
LRV 32



**Nero Oak 2144**  
plank size in sheet: 125 x 1000mm  
LRV 7



**Cottage Paving 2148**  
plank size in sheet: 100-500x100-500mm  
LRV 39



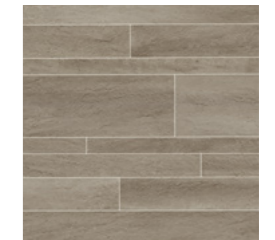
**Tuscan Paving 2149**  
plank size in sheet: 100-500x100-500mm  
LRV 21



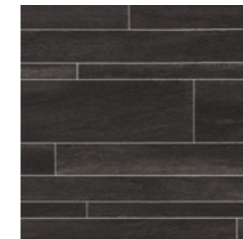
**Barca Limestone 2150**  
plank size in sheet: 143 x 500 - 800mm  
LRV 50



**Manhattan Limestone 2151**  
plank size in sheet: 143 x 500 - 800mm  
LRV 48



**Quarried Slate 2152**  
plank size in sheet: 35-135 x 500-1000mm  
LRV 27



**Noir Slate 2153**  
plank size in sheet: 35-135 x 500-1000mm  
LRV 8



Secura PUR



Secura PUR

## Technical Specification

### Product Format

Gauge	ISO 24346 (EN 428)	3.0mm
Wear Layer	ISO 24340 (EN 429)	0.35mm
Total Weight	ISO 23997 (EN 430)	1780g/m <sup>2</sup>
Finish	PUR	

### Performance Requirements

General Performance	ISO 26986 (EN 653)	Conforms
Use Area	ISO 10874 (EN 685)	23, 32, 41
Slip Resistance	EN 13893	Class DS
	DIN 51130 / DIN EN 16165 Ann. B	R10
Abrasion Resistance	EN 653	Group T
Reaction to Fire	EN 13501-1	Class Bfl-S1
Static Electrical Propensity	EN 1815	≤2.0kV Classified as 'antistatic'
Residual Indentation	ISO 24343-1 (EN 433)	≤0.20mm
Castor Chair (continuous use)	ISO 4918 (EN 425)	Suitable
Furniture Leg	ISO 16581 (EN 424)	Pass Type 3 foot
Dimensional Stability	ISO 23999 (EN 434)	≤0.40%
Flexibility	ISO 24344 (EN 435)	(Method A) Pass 20mm ø
Thermal Resistance	EN 12667	0.0525m <sup>2</sup> K/W 0.525 Tog
Underfloor Heating	Suitable, max 27°C	
Light Fastness	ISO 105-B02 (Method 3)	≥6

### Sustainability

BRE Green Guide	A+ ENP 415
Generic EN 15804 EPD	Available
Recyclable & Reusable	100%
Recycled Content	10%
REACH	Compliant
Indoor Air Comfort Gold	Eurofins certified product
FloorScore	Certified
AgBB/ABG	Pass
Responsible Sourcing	BES 6001 Excellent

### Acoustic Performance

Impact Sound Reduction	ISO 10140-3	19dB
------------------------	-------------	------

### Maintenance Performance

Resistance to Chemicals	ISO 26987 (EN 423)	Good
-------------------------	--------------------	------

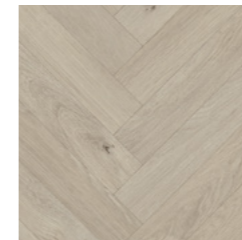
All Polyflor commercial sheet vinyl ranges provide a continuous, impervious and hygienic flooring solution which can be confidently cleaned in accordance with recommended maintenance procedures and approved maintenance products. The implementation of an effective cleaning regime is the most important defence against infection.

## Sheet Sizes

Format	Size	Shades	Coverage per Roll
Sheet	4m x 20-25m	18	80-100m <sup>2</sup>
	3m x 20-25m	18	60-75m <sup>2</sup>
	2m x 20-25m	18	40-50m <sup>2</sup>



**Oakland Parquet 2167**  
plank size in sheet: 88 x 700mm  
LRV 38



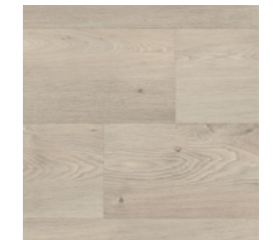
**Grey Oak Parquet 2168**  
plank size in sheet: 88 x 700mm  
LRV 37



**White Limed Ash 2160**  
plank size in sheet: 166 x 1500mm  
LRV 57



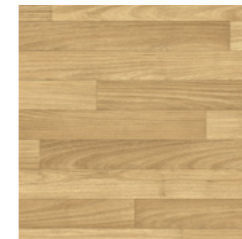
**Coastal Oak 2159**  
plank size in sheet: 200 x 1500mm  
LRV 37



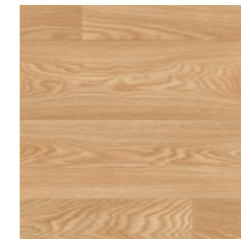
**Sterling Oak 2161**  
plank size in sheet: 200 x 1000mm  
LRV 40



**Blond Oak 2127**  
plank size in sheet: 200 x 1500mm  
LRV 42



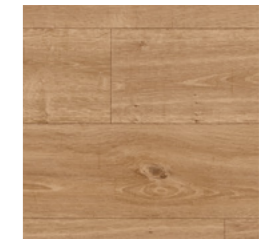
**Golden Oak 2128**  
plank size in sheet: 62.5 x 500-1000mm  
LRV 37



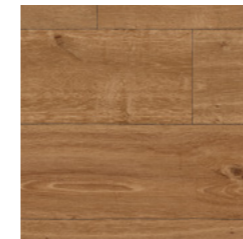
**Wheatfield Oak 2163**  
plank size in sheet: 167 x 1500mm  
LRV 39



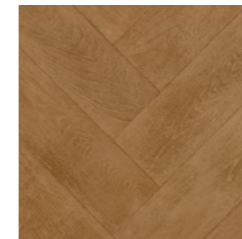
**Natural Oak 2126**  
plank size in sheet: 200 x 1000mm  
LRV 32



**Honey Blushed Oak 2162**  
plank size in sheet: 200 x 1500mm  
LRV 30



**Country Oak 2130**  
plank size in sheet: 200 x 1500mm  
LRV 20



**Antique Herringbone 2129**  
plank size in sheet: 140 x 710mm  
LRV 20



**Ebony 2135**  
plank size in sheet: 100-150 x 1000mm  
LRV 12



**Limestone 2111**  
plank size in sheet: 333 x 500mm  
LRV 55



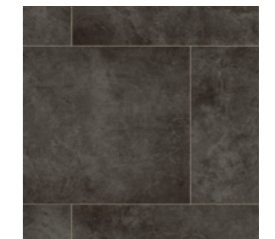
**Powdered Concrete 2164**  
NCS S 3000-N  
LRV 40



**Polished Concrete 2118**  
NCS S 5502-Y  
LRV 23



**Plymouth Slate 2165**  
plank size in sheet: 333 x 500mm  
LRV 18



**Black Slate 2114**  
plank size in sheet: 333 x 500mm  
LRV 8

LRV - Light Reflectance Value

NCS - Natural Colour System

HOMOGENEOUS  
HETEROGENEOUS  
SAFETY  
LUXURY VINYL TILES  
LOOSE LAY  
INTERWOVEN VINYL TILES  
ESD  
SPORT  
SEMI-FLEXIBLE TILES  
RUBBER  
WALL CLADDING





# Expona EnCore Rigid Loc PUR

UK CA CE  
BS EN 14041 EN 14041

## Expona EnCore Rigid Loc PUR

### Technical Specification

#### Product Format

Gauge	ISO 24346 (EN 428)	6.5mm
Wear Layer	ISO 24340 (EN 429)	0.55mm
IXPE Acoustic Layer		1mm
Total Weight	ISO 23997 (EN 430)	10,800g/m <sup>2</sup>
Finish		PUR

#### Performance Requirements

General Performance	EN 16511 ASTM F3621	Conforms Conforms
Use Area	ISO 10874 (EN 685)	23, 34
Slip Resistance	EN 13893 DIN 51130 / DIN EN 16165 Ann. B	Class DS R10
Binder Content	ISO 10582	Type I
Abrasion Resistance	EN 649 EN 13329 Annex E	Group T ≥ 4000 cycles, Type 1
Reaction to Fire	EN 13501-1 ASTM E662 ASTM E648 CAN/ULC S102.2	Class Bfl-S1 <450 Pass Class 1 FSV < 300; SDV < 500
Residual Indentation	ISO 24343-1 (EN 433) ASTM F970 ASTM F1914	<0.10mm ≤0.005" @ 750psi ≤0.005"
Castor Chair (continuous use)	ISO 4918 (EN 425)	Suitable
Impact Resistance	EN 13329 Annex F	Pass ≥1800mm
Dimensional Stability	ISO 23999 (EN 434) ASTM F2199	≤0.20% max Pass
Thermal Resistance	EN 12667	0.034m <sup>2</sup> K/W

#### Performance Requirements (Continued)

Underfloor Heating		Suitable, max 27°C
Light Fastness	ISO 105-B02 (Method 3)	>6
Resistance to Light	ASTM F1515	ΔE ≤ 8.0 - Meets
Resistance to Heat	ASTM F1514	ΔE ≤ 8.0 - Meets
Furniture Leg	ISO 16581 (EN 424)	Pass Type O foot
Swelling	EN ISO 24336	Pass (0.0%)

#### Sustainability

Recyclable		100%
Recycled Content		15%
REACH		Compliant
Indoor Air Comfort Gold		Eurofins certified product
FloorScore		Certified
AgBB/ABG		Pass
Responsible Sourcing	SA 8000	Approved factory

#### Acoustic Performance

Impact Sound Reduction	ISO 10140-3	19dB
Impact Sound Transmission Reduction	ASTM E2179	Delta IIC 23
Sound Transmission Coefficient	ASTM E90/492	STC 54
Impact Insulation Class	ASTM E90/492	IIC 55

#### Maintenance Performance

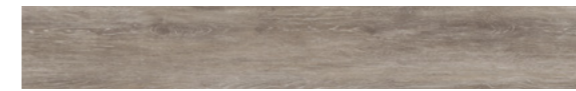
Resistance to Chemicals	ISO 26987 (EN 423) ASTM F925	Good Good
-------------------------	---------------------------------	--------------

Regular light maintenance is more cost-effective than periodic heavy maintenance and more beneficial to the floor covering.

### Plank Sizes

Format	Size	Shades	Quantity per Box	Coverage per Box
Plank	177.35mm x 1212.4mm	7	10	2.15m <sup>2</sup>
	196.4mm x 1212.4mm	5	9	2.14m <sup>2</sup>

**177.35mm x 1212.4mm**  
6.98" x 47.73"



Icelandic Oak **9025** LRV 34



Summerhouse Oak **9026** LRV 33



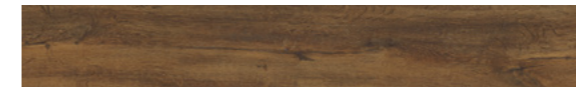
Rice Wine Oak **9028** LRV 43



Eden Ash **9027** LRV 23



Log Cabin Oak **9029** LRV 23



Rich Hazel Oak **9031** LRV 16



Tennessee Oak **9032** LRV 10

**196.4mm x 1212.4mm**  
7.73" x 47.73"



Moorland Oak **9033** LRV 28



Parisian Limed Oak **9034** LRV 37



Harbour Side Oak **9035** LRV 37



Treehouse Oak **9036** LRV 26



Shingle Oak **9037** LRV 22

LRV - Light Reflectance Value

Micro Bevelled Edges

Colour/Pattern Variation



# Camaro Loc PUR



## Camaro Loc PUR

### Technical Specification

#### Product Format

Gauge	ISO 24346 (EN 428)	4.0mm
Wear Layer	ISO 24340 (EN 429)	0.30mm
Total Weight	ISO 23997 (EN 430)	7025g/m <sup>2</sup>
Finish	PUR	

#### Performance Requirements

General Performance	ISO 10582 (EN 649)	Conforms
Use Area	ISO 10874 (EN 685)	23, 31
Slip Resistance	EN 13893	Class DS
	DIN 51130 /	R10
	DIN EN 16165 Ann. B	R10
AS 4586	R10	
Binder Content	ISO 10582	Type I
Abrasion Resistance	EN 649	Group T
Reaction to Fire	EN 13501-1	Class Bfl-S1
	ASTM E662	<450 Pass
	ASTM E648	Class 1
	CAN/ULC S102.2	FSV < 300; SDV < 500
Static Electrical Propensity	EN 1815	≤2.0kV Classified as 'antistatic'
Residual Indentation	ISO 24343-1 (EN 433)	<0.05mm*
	ASTM F970	≤0.005" @ 750psi
	ASTM F1914	≤0.005"
Castor Chair (continuous use)	ISO 4918 (EN 425)	Suitable
Dimensional Stability	ISO 23999 (EN 434)	≤0.10% max
	ASTM F2199	Pass
Underfloor Heating	Suitable, max 27°C	
Light Fastness	ISO 105-B02 (Method 3)	≥6
Resistance to Light	ASTM F1515	ΔE ≤ 8.0 - Meets
Resistance to Heat	ASTM F1514	ΔE ≤ 8.0 - Meets

\*Average test value from current production.

#### Sustainability

BRE Green Guide	A+ Generic	
Generic EN 15804 EPD	Available	
Recyclable	100%	
Recycled Content	40%	
REACH	Compliant	
Indoor Air Comfort Gold	Eurofins certified product	
FloorScore	Certified	
Finnish M1	Certified	
AqBB/ABG	Pass	
Responsible Sourcing	BES 6001	Very Good
	SA 8000	Approved factory

#### Acoustic Performance

Impact Sound Reduction	ISO 10140-3	19dB**
------------------------	-------------	--------

\*\*Installed with Polyflor Vinyl LOC Underlay

#### Maintenance Performance

Resistance to Chemicals	ISO 26987 (EN 423)	Good
	ASTM F925	Good

Regular light maintenance is more cost-effective than periodic heavy maintenance and more beneficial to the floor covering.

### Plank & Tile Sizes

Format	Size	Shades	Quantity per Box	Coverage per Box
Plank	145.6mm x 907.6mm	6	15	1.98m <sup>2</sup>
	177.4mm x 1212.4mm	13	9	1.94m <sup>2</sup>

Format	Size	Shades	Quantity per Box	Coverage per Box
Tile	298mm x 602.8mm	5	11	1.98m <sup>2</sup>

177.4 x 1212.4mm  
6.9" x 47.7"



Manor Oak **3467** LRV 25



Hickory Oak **3439** LRV 30



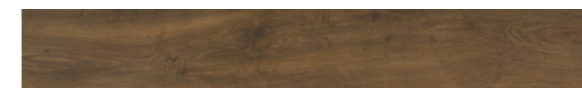
Evergreen Oak **3442** LRV 24



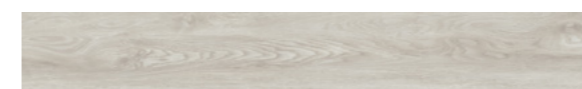
Butternut Oak **3443** LRV 21



Laurel Dark Oak **3436** LRV 14



Flamed Oak **3468** LRV 15



Clara Oak **3461** LRV 46



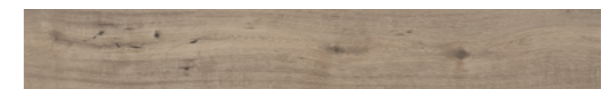
Devonshire Oak **3462** LRV 38



Grey Driftwood **3463** LRV 43



Smoke Limed Oak **3437** LRV 28



Dockyard Timber **3465** LRV 23



Tan Limed Oak **3438** LRV 20



Vienna Oak **3466** LRV 30

LRV - Light Reflectance Value

Micro Bevelled Edges


Colour/Pattern Variation

145.6 x 907.6mm  
5.7" x 35.7"




White Limed Oak **3441**  LRV 50



Grey Mountain Ash **3427**  LRV 32



Summer Maple **3429**  LRV 35



Apple Tree **3431**  LRV 36



Rich Valley Oak **3432**  LRV 26




Vintage Timber **3446**  LRV 17

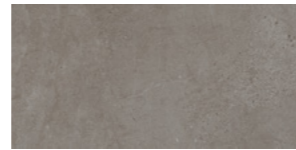
298 x 602.8mm  
11.7" x 23.7"




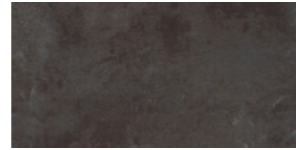
Isla Concrete **3457**  LRV 55



Grey Flagstone **3452**  LRV 43




Maison Concrete **3458**  LRV 20




Black Shadow Slate **3453**  LRV 12



Classic Yorkstone **3455**  LRV 46

LRV - Light Reflectance Value

 Micro Bevelled Edges

 Colour/Pattern Variation






# Camaro Rigid Core PUR

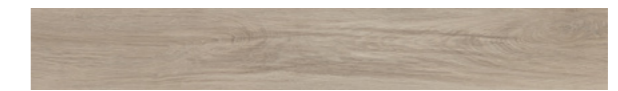


## Camaro Rigid Core PUR

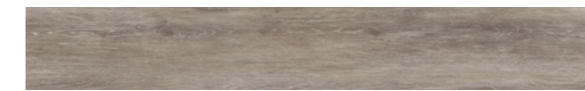
177.4 x 1212.4mm  
6.9" x 47.7"



Bianco Oak **4137**  LRV 46



Waterside Oak **PLK4143**  LRV 39



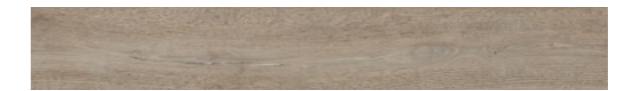
Boathouse Oak **4138**  LRV 27



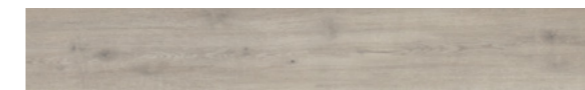
Naked Blond Oak **PLK4144**  LRV 36



Quayside Oak **4139**  LRV 30



Fenland Oak **4146**  LRV 30



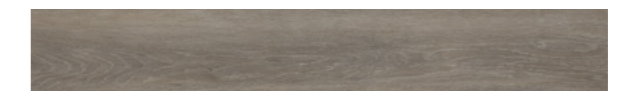
Westchester Oak **PLK4141**  LRV 39



Astoria Oak **PLK4147**  LRV 20




Rosedale Oak **4142**  LRV 42




Bayswater Oak **4148**  LRV 25

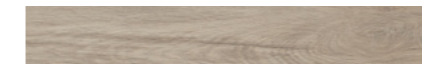
101.6mm x 609.6mm  
4" x 24"




Westchester Oak Herringbone **RPQ4141**  LRV 39




Naked Blond Oak Herringbone **RPQ4144**  LRV 36

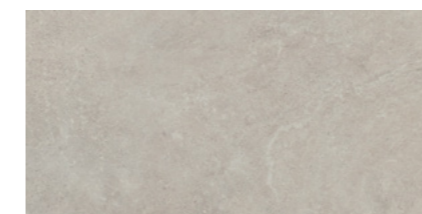



Waterside Oak Herringbone **RPQ4143**  LRV 39

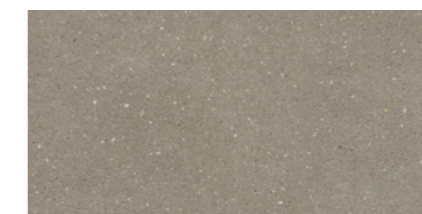



Astoria Oak Herringbone **RPQ4147**  LRV 20

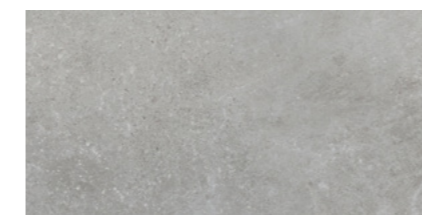
304.8mm x 609.6mm  
12" x 24"



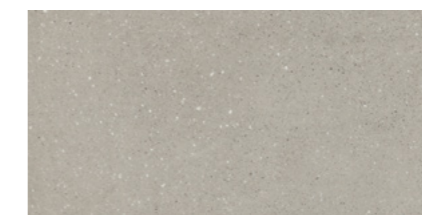
Soho Cement **4149**  LRV 50




Goldstone Micro Terrazzo **4152**  LRV 29



Tribeca Cement **4151**  LRV 39



Pearl Micro Terrazzo **4153**  LRV 40

## Technical Specification

### Product Format

Gauge	ISO 24337 (EN 428)	5.5mm
Wear Layer	ISO 24340 (EN 429)	0.30mm
IXPE Acoustic Layer		1mm
Joint Profile		5G®
Total Weight	ISO 23997 (EN 430)	8570g/m²
Finish		PUR

### Performance Requirements

General Performance	EN 16511	Conforms
Use Area	ISO 10874 (EN 685)	23, 31
Slip Resistance	EN 13893	Class DS
	DIN 51130 / DIN EN 16165 Ann. B	R10
Binder Content	ISO 10582	Type I
Abrasion Resistance	EN 15468 Annex A	≥ 7000 cycles
Reaction to Fire	EN 13501-1 CAN/ULC S102.2	Class Bfl-S1 FSV < 300; SDV < 500
Static Electrical Propensity	EN 1815	<2.0kV Classified as 'antistatic'
Residual Indentation	ISO 24343-1 (EN 433)	≤0.10mm*
Castor Chair (continuous use)	ISO 4918 (EN 425)	Suitable
Impact Resistance	EN 13329 Annex F	Pass ≥1800mm
Thermal Resistance	EN 12664	0.0356m² K/W
Dimensional Stability	ISO 23999 (EN 434)	≤0.10%*
Underfloor Heating		Suitable, max 27°C
Light Fastness	ISO 105-B02 (Method 3)	≥6
Furniture Leg	ISO 16581 (EN 424)	Pass Type O foot
Swelling	EN ISO 24336	Pass (0.0%)

\*Average test value from current production.

### Sustainability

Recyclable		100%
Recycled Content		15%
Indoor Air Comfort Gold		Eurofins certified product
FloorScore		Certified
Finnish M1		Certified
AgBB/ABG		Pass
Responsible Sourcing	SA 8000	Approved factory

### Acoustic Performance

Impact Sound Reduction	ISO 10140-3	18dB
Sound Transmission Coefficient	ASTM E90/492	STC 50
Impact Insulation Class	ASTM E90/492	IIC 55

### Maintenance Performance

Resistance to Chemicals	ISO 26987 (EN 423)	Good resistance
-------------------------	--------------------	-----------------


Regular light maintenance is more cost-effective than periodic heavy maintenance and more beneficial to the floor covering.

## Plank & Tile Sizes

Format	Size	Shades	Quantity per Box	Coverage per Box
Plank	101.6mm x 609.6mm	4	24	1.48m²
	177.4mm x 1212.4mm	10	10	2.15m²

Format	Size	Shades	Quantity per Box	Coverage per Box
Tile	304.8mm x 609.6mm	4	12	2.22m²

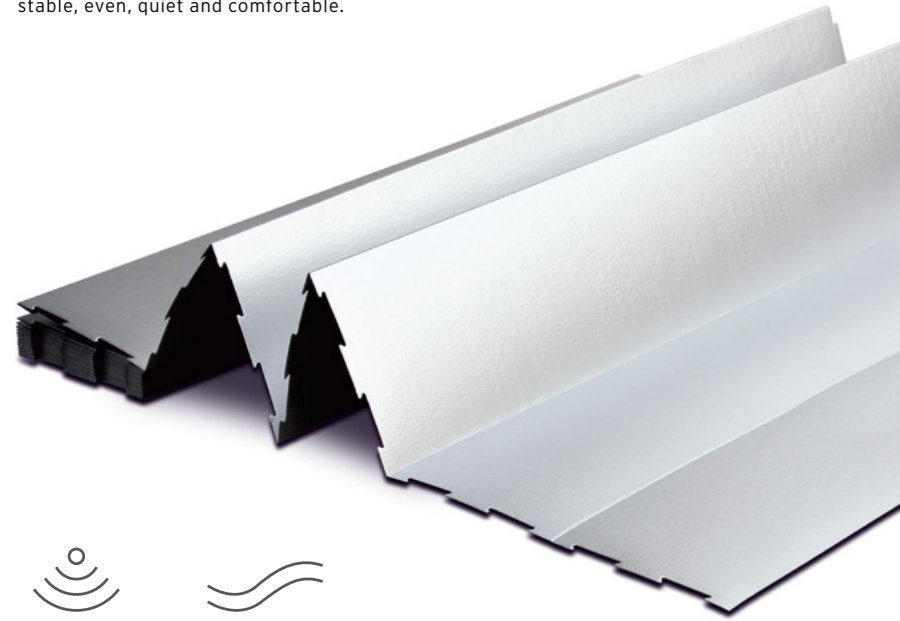
LRV - Light Reflectance Value

 Micro Bevelled Edges

 Colour/Pattern Variation

# Vinyl LOC Underlay

We recommend Camaro Loc is installed by a flooring professional over Polyflor Vinyl Loc Underlay. Providing a consistent surface, optimised for the installation of interlocking vinyl flooring, Vinyl Loc Underlay also acts as a shock-absorber when walked across and reduces impact sound transmitted through neighbouring rooms. It is also suitable for use over underfloor heating due to its low thermal resistance, giving you a floor covering that is stable, even, quiet and comfortable.



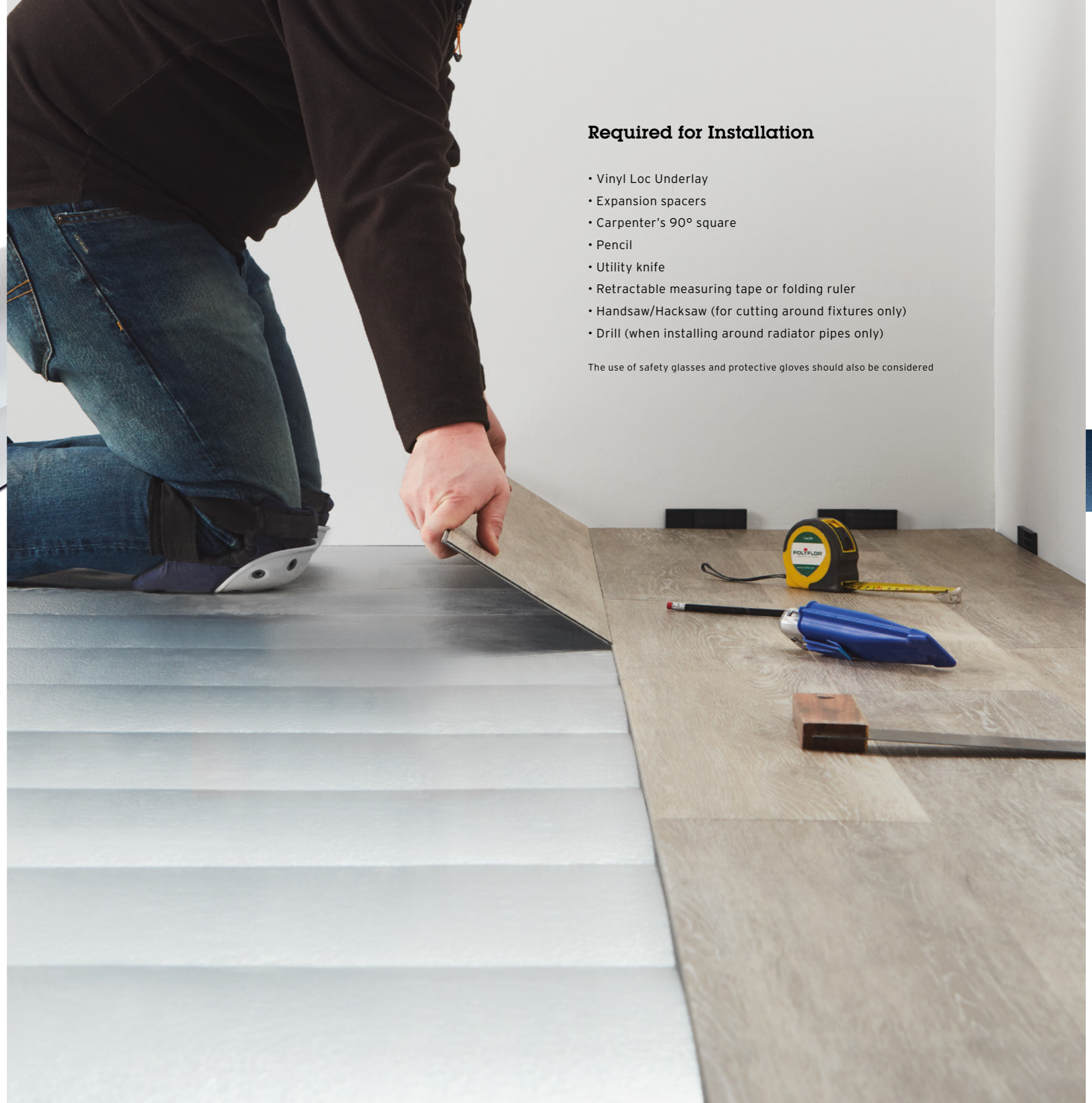
## Acoustic benefits (19dB)\*

Simple to use and easy to install

Anti-slip surface

Smooths out minor subfloor imperfections

\*When installed with Camaro LOC



## Required for Installation

- Vinyl Loc Underlay
- Expansion spacers
- Carpenter's 90° square
- Pencil
- Utility knife
- Retractable measuring tape or folding ruler
- Handsaw/Hacksaw (for cutting around fixtures only)
- Drill (when installing around radiator pipes only)

The use of safety glasses and protective gloves should also be considered