

Compliant with EN 13845 and engineered to provide slip resistant qualities which are sustainable and assured throughout the products guaranteed life. The collections are ideally suited for specification within a range of commercial environments where there is a risk of spillage or wetness.

GENERAL PURPOSE

Polysafe Verona PUR: <i>Original</i>	76
Polysafe Verona PUR: <i>Pure Colours</i>	78
Polysafe QuickLay PUR	80
Polysafe Standard PUR	82
Polysafe Stone fx PUR	84
Polysafe Wood fx PUR	86
Polysafe Wood fx Acoustix PUR	88
Polysafe Mosaic PUR	90
Polysafe Vogue Ultra PUR	92
Polysafe Astral PUR	94
Expona Control PUR	96

WET ROOMS

Polysafe Quattro PUR	100
Polysafe Hydro Evolve	102
Polysafe Hydro	104

COMMERCIAL KITCHENS

Polysafe Apex	108
Polysafe Ultima	110

TECHNICAL DATA	STANDARDS	Polysafe Verona PUR: Original	Polysafe Verona PUR: Pure Colours	Polysafe QuickLay PUR	Polysafe Standard PUR	Polysafe Stone fx PUR	Polysafe Wood fx PUR	Polysafe Wood fx Acoustix PUR	Polysafe Mosaic PUR	Polysafe Vogue Ultra PUR	Polysafe Astral PUR	Expona Control PUR
Product Format												
Gauge	ISO 24346 (EN 428)	2.0mm	2.0mm	2.2mm	2.0mm, 2.5mm	2.0mm	2.0mm	3.7mm	2.0mm	2.0mm	2.0mm	2.5mm
Wear Layer	ISO 24340 (EN 429)	-	-	-	-	0.70mm	0.70mm	0.65mm	0.70mm	-	-	0.70mm
Sheet Size	ISO 24341 (EN 426)	2m x 20m	2m x 20m	2m x 20m	2.0mm: 2m x 20m 2.5mm: 2m x 20m	2m x 20m	2m x 20m	2m x 20m	2m x 20m	2m x 20m	2m x 20m	For Plank & Tile sizes, please see page 96
Total Weight	ISO 23997 (EN 430)	2600g/m ²	2600g/m ²	2700g/m ²	2.0mm: 2430g/m ² 2.5mm: 3100g/m ²	2780g/m ²	2780g/m ²	2670g/m ²	2400g/m ²	2400g/m ²	2450g/m ²	4290g/m ²
Finish		PUR	PUR	PUR	PUR	PUR	PUR	PUR	PUR	PUR	PUR	PUR

Performance Requirements

General Performance	EN 13845	Conforms	Conforms	Conforms	Conforms	Conforms	Conforms	-	Conforms	Conforms	Conforms	-	
	ISO 11638 (EN 651)	-	-	-	-	-	-	Conforms	-	-	-	-	
	ASTM F1303	Type II, Grade I, Class B Backing	Type II, Grade I, Class B Backing	Conforms	Type II, Grade I, Class B Backing	Conforms	Type I, Grade I, Class B Backing	-	Conforms	Type II, Grade I, Class B Backing	Conforms	-	
	ISO 10582 (EN 649)	-	-	-	-	-	-	-	-	-	-	Conforms	
Use Area	ISO 10874 (EN 685)	23, 34, 43	23, 34, 43	23, 34, 43	23, 34, 43	23, 34, 43	23, 34, 43	23, 34, 42	23, 34, 43	23, 34, 43	23, 34, 43	23, 34, 43	
Enhanced Slip Resistance	EN 13845	ESf	ESf	ESf	ESf	ESf	ESf	ESf	ESf	ESf	ESf	ESf	
	RRL Pendulum Test	≥36 (wet test - 4S Rubber/Slider 96)	≥45 (wet test - 4S Rubber/Slider 96)	≥45 (wet test - 4S Rubber/Slider 96)	≥36 (wet test - 4S Rubber/Slider 96)	≥36 (wet test - 4S Rubber/Slider 96)	≥36 (wet test - 4S Rubber/Slider 96)	≥36 (wet test - 4S Rubber/Slider 96)	≥36 (wet test - 4S Rubber/Slider 96)	≥36 (wet test - 4S Rubber/Slider 96)	≥36 (wet test - 4S Rubber/Slider 96)	≥36 (wet test - 4S Rubber/Slider 96)	
	DIN 51130 / DIN EN 16165 Ann. B	R10	R11	R11	R10	R10	R10	-	R10	R10	R10	R10	
	Surface Roughness	Rz ≥20µm	Rz ≥20µm	Rz ≥20µm	Rz ≥20µm	Rz ≥20µm	Rz ≥20µm	Rz ≥20µm	Rz ≥20µm	Rz ≥20µm	Rz ≥20µm	Rz ≥20µm	Rz >20µm
	ASTM D2047	SCOF≥0.8	SCOF≥0.8	SCOF≥0.8	SCOF≥0.8	SCOF≥0.8	-	-	SCOF≥0.8	SCOF≥0.8	SCOF≥0.8	SCOF≥0.8	
Abrasion Resistance	EN 13845	50,000 cycles	50,000 cycles	50,000 cycles	50,000 cycles	50,000 cycles	50,000 cycles	50,000 cycles	50,000 cycles	50,000 cycles	50,000 cycles	50,000 cycles	
	EN 13893	Class DS	Class DS	Class DS	Class DS	Class DS	Class DS	Class DS	Class DS	Class DS	Class DS	Class DS	
Reaction to Fire	EN 13501-1	Class Bfl-S1	Class Bfl-S1	Class Bfl-S1	Class Bfl-S1	Class Bfl-S1	Class Bfl-S1	Class Bfl-S1	Class Bfl-S1	Class Bfl-S1	Class Bfl-S1	Class Bfl-S1	
	ASTM E648	Class 1	Class 1	Class 1	Class 1	Class 1	Class 1	Class 1	Class 1	Class 1	Class 1	Class 1	
	CAN/ULC S102.2	FSV < 300; SDV < 500	FSV < 300; SDV < 500	FSV < 300; SDV < 500	FSV < 300; SDV < 500	FSV < 300; SDV < 500	FSV < 300; SDV < 500	FSV < 300; SDV < 500	FSV < 300; SDV < 500	FSV < 300; SDV < 500	FSV < 300; SDV < 500	FSV < 300; SDV < 500	
Static Electrical Propensity	EN 1815	≤2.0kV Classified as 'antistatic'	≤2.0kV Classified as 'antistatic'	≤2.0kV Classified as 'antistatic'	≤2.0kV Classified as 'antistatic'	≤2.0kV Classified as 'antistatic'	≤2.0kV Classified as 'antistatic'	≤2.0kV Classified as 'antistatic'	≤2.0kV Classified as 'antistatic'	≤2.0kV Classified as 'antistatic'	≤2.0kV Classified as 'antistatic'	≤2.0kV Classified as 'antistatic'	

Sustainability

BRE Green Guide		A+ ENP 472	A+ ENP 472	A+ Generic	A+ ENP 472	A+ ENP 415	A+ ENP 415	A+ ENP 415	A+ ENP 472	A+ ENP 472	A+ ENP 472	A+ ENP 429
Indoor Air Comfort Gold		Eurofins certified product	Eurofins certified product	Eurofins certified product	Eurofins certified product	Eurofins certified product	Eurofins certified product	Eurofins certified product	Eurofins certified product	Eurofins certified product	Eurofins certified product	Eurofins certified product
FloorScore		Certified	Certified	Certified	Certified	Certified	Certified	Certified	Certified	Certified	Certified	Certified
Finnish M1		Certified	Certified	Certified	Certified	Certified	Certified	-	Certified	Certified	Certified	Certified
AgBB/ABG		Pass	Pass	Pass	Pass	Pass	Pass	Pass	Pass	Pass	Pass	Pass
Responsible Sourcing	BES 6001	Excellent	Excellent	-	Excellent	Excellent	Excellent	Excellent	Excellent	Excellent	Excellent	Very Good

Acoustic Performance

Impact Sound Reduction	ISO 10140-3	-	-	10dB	-	-	19dB	-	-	-	-	2dB
------------------------	-------------	---	---	------	---	---	------	---	---	---	---	-----

Maintenance Performance

Resistance to Chemicals	ISO 26987 (EN 423)	Good resistance	Good resistance	Good resistance	Good resistance	Good resistance	Good resistance	Good resistance	Good resistance	Good resistance	Good resistance	Good resistance
-------------------------	--------------------	-----------------	-----------------	-----------------	-----------------	-----------------	-----------------	-----------------	-----------------	-----------------	-----------------	-----------------

All Polyflor commercial sheet vinyl ranges provide a continuous, impervious and hygienic flooring solution which can be confidently cleaned in accordance with recommended maintenance procedures and approved maintenance products. The implementation of an effective cleaning regime is the most important defence against infection.

The wet slip resistance across all Polysafe products is sustainable throughout the guaranteed life of the product, with strict adherence to Health & Safety Executive (HSE) guidelines.



Polysafe Verona PUR: Original



Technical Specification

Product Format

Gauge	ISO 24346 (EN 428)	2.0mm
Total Weight	ISO 23997 (EN 430)	2600g/m ²
Finish		PUR

Performance Requirements

General Performance	EN 13845	Conforms
	ASTM F1303	Type II, Grade I, Class B Backing
Use Area	ISO 10874 (EN 685)	23, 34, 43
	EN 13845 RRL Pendulum Test	ESf ≥36 (wet test - 4S Rubber / Slider 96)
Enhanced Slip Resistance	DIN 51130 / DIN EN 16165 Ann. B	R10
	Surface Roughness ASTM D2047	Rz ≥20µm SCOF ≥0.8
Abrasion Resistance	EN 13845	50,000 cycles
	EN 13893	Class DS
Reaction to Fire	EN 13501-1	Class Bfl-S1
	ASTM E648	Class 1
	CAN/ULC S102.2 AS ISO 9239-1	FSV < 300; SDV < 500 >8.0kW/m ²
Static Electrical Propensity	EN 1815	≤2.0kV Classified as 'antistatic'
Residual Indentation	ASTM F970 (Modified)	≤0.005" (750 psi)
Flexibility	ASTM F137	1.5" Pass
Resistance to Light	ASTM F1515	ΔE ≤ 8.0 - Meets
Resistance to Heat	ASTM F1514	ΔE ≤ 8.0 - Meets

Sustainability

BRE Green Guide	A+ ENP 472
GreenTag	LCA Rate Gold Plus GreenRate level A
Generic EN 15804 EPD	Available
Recyclable	100%
Recycled Content	Contains recycled material
REACH	Compliant
Indoor Air Comfort Gold	Eurofins certified product
FloorScore	Certified
Finnish M1	Certified
AqBB/ABG	Pass
Responsible Sourcing	BES 6001 Excellent

Maintenance Performance

Resistance to Chemicals	ISO 26987 (EN 423)	Good
	ASTM F925	Good
Alco Hand Gels	Compatible for use with most commonly used alco-based hand gels	
Steam Cleaning	Suitable for steam cleaning on a periodic basis	

All Polyflor commercial sheet vinyl ranges provide a continuous, impervious and hygienic flooring solution which can be confidently cleaned in accordance with recommended maintenance procedures and approved maintenance products. The implementation of an effective cleaning regime is the most important defence against infection.

Hygiene

Bacterial Resistance	ISO 846 Part C	Does not favour growth
----------------------	----------------	------------------------

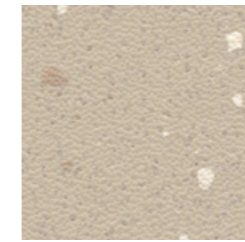
Sheet Size

Format	Size	Shades	Coverage per Roll
Sheet	2m x 20m	18	40m ²

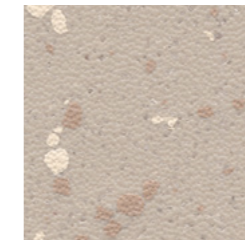
Polysafe Verona PUR: Original



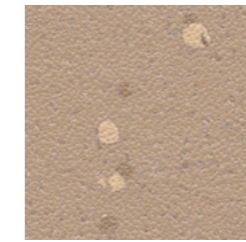
Cookie Cream **5201** w/r 5201
NCS S 1502-Y LRV 64



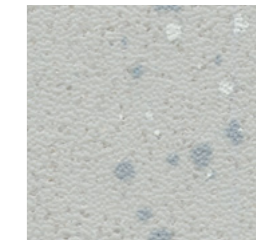
Biscotti **5212** w/r 5212
NCS S 3005-Y20R LRV 45



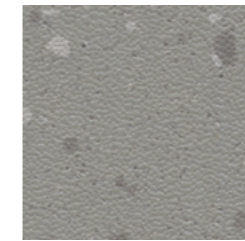
Marshmallow **5214** w/r 5214
NCS S 3005-Y50R LRV 45



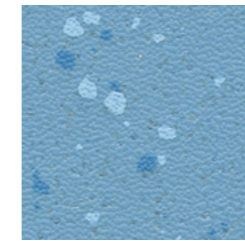
Caramel Latte **5213** w/r 5213
NCS S 3010-Y40R LRV 34



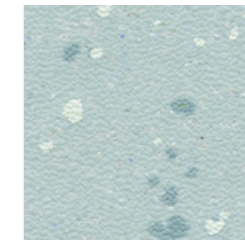
Rainstorm **5202** w/r 5202
NCS S 2502-G LRV 44



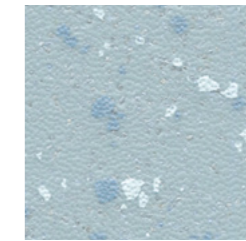
Dolphin Grey **5203** w/r 5203
NCS S 4500-N LRV 26



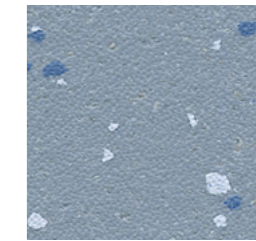
Blue Lagoon **5206** w/r 5206
NCS S 2030-R90B LRV 32



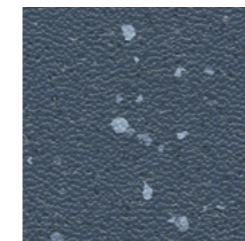
Freshmint **5209** w/r 5209
NCS S 2010-B30G LRV 52



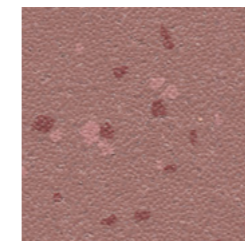
Skyline **5205** w/r 5205
NCS S 2010-B LRV 47



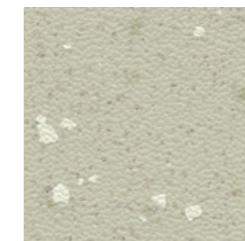
Horizon Blue **5208** w/r 5208
NCS S 3020-R90B LRV 31



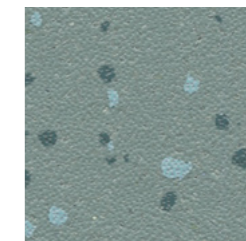
Nightfall **5207** w/r 5207
NCS S 6010-R90B LRV 12



Summer Coulis **5217** w/r 5217
NCS S 4020-Y90R LRV 21



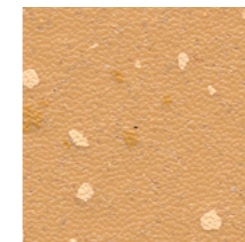
Oregano **5210** w/r 5210
NCS S 2005-G70Y LRV 48



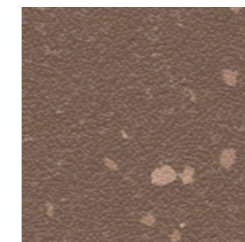
Seagrass **5211** w/r 5211
NCS S 4010-B50G LRV 25



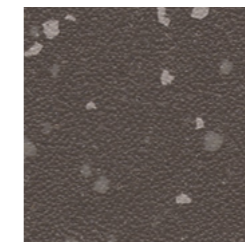
Soft Peach **5216** w/r 5216
NCS S 1515-Y60R LRV 47



Butterscotch **5218** w/r 5218
NCS S 2030-Y30R LRV 35



Chocolate Chip **5215** w/r 5215
NCS S 6005-Y50R LRV 16



Cafe Noir **5204** w/r 5204
NCS S 7000-N LRV 11

w/r - Weld Rod

LRV - Light Reflectance Value

NCS - Natural Colour System

HOMOGENEOUS
HETEROGENEOUS
SAFETY
LUXURY VINYL TILES
LOOSE LAY
INTERWOVEN VINYL TILES
ESD
SPORT
SEMI-FLEXIBLE TILES
RUBBER
WALL CLADDING



Polysafe Verona PUR: Pure Colours

Technical Specification

Product Format

Gauge	ISO 24346 (EN 428)	2.0mm
Total Weight	ISO 23997 (EN 430)	2600g/m ²
Finish		PUR

Performance Requirements

General Performance	EN 13845 ASTM F1303	Conforms Type II, Grade I, Class B Backing
Use Area	ISO 10874 (EN 685)	23, 34, 43
Enhanced Slip Resistance	EN 13845 RRL Pendulum Test DIN 51130 / DIN EN 16165 Ann. B Surface Roughness ASTM D2047 AS 4586 Appendix D	ESf ≥45 (wet test - 4S Rubber / Slider 96) R11 Rz ≥20µm SCOF ≥0.8 R11
Abrasion Resistance	EN 13845 EN 13893	50,000 cycles Class DS
Reaction to Fire	EN 13501-1 ASTM E648 CAN/ULC S102.2 AS ISO 9239-1	Class Bfl-S1 Class 1 FSV < 300; SDV < 500 >8.0kW/m ²
Static Electrical Propensity	EN 1815	≤2.0kV Classified as 'antistatic'
Residual Indentation	ASTM F970 (Modified)	≤0.005" (750 psi)
Flexibility	ASTM F137	1.5" Pass
Resistance to Light	ASTM F1515	ΔE ≤ 8.0 - Meets
Resistance to Heat	ASTM F1514	ΔE ≤ 8.0 - Meets

Sheet Size

Format	Size	Shades	Coverage per Roll
Sheet	2m x 20m	18	40m ²

Sustainability

BRE Green Guide		A+ ENP 472
Generic EN 15804 EPD		Available
Recyclable		100%
Recycled Content		Contains recycled material
REAcH		Compliant
Indoor Air Comfort Gold		Eurofins certified product
FloorScore		Certified
Finnish M1		Certified
AqBB/ABG		Pass
Responsible Sourcing	BES 6001	Excellent

Maintenance Performance

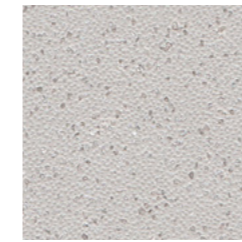
Resistance to Chemicals	ISO 26987 (EN 423) ASTM F925	Good Good
Alco Hand Gels	Compatible for use with most commonly used alco-based hand gels	
Steam Cleaning	Suitable for steam cleaning on a periodic basis	

All Polyflor commercial sheet vinyl ranges provide a continuous, impervious and hygienic flooring solution which can be confidently cleaned in accordance with recommended maintenance procedures and approved maintenance products. The implementation of an effective cleaning regime is the most important defence against infection.

Hygiene

Bacterial Resistance	ISO 846 Part C	Does not favour growth
----------------------	----------------	------------------------

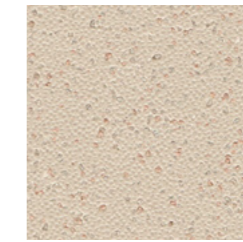
Polysafe Verona PUR: Pure Colours



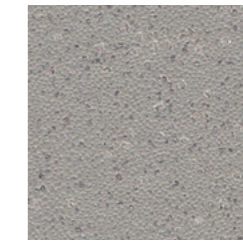
Rock Salt **5231** w/r 9858
NCS S 3000-N LRV 43



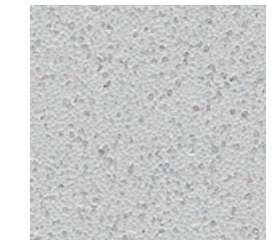
Vanilla **5221** w/r 5221
NCS S 1502-Y LRV 63



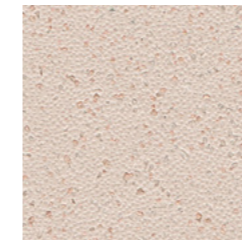
Mocha **5222** w/r 5212
NCS S 3005-Y20R LRV 43



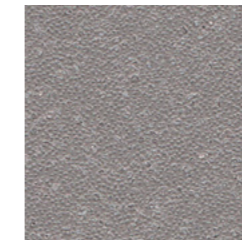
Monsoon **5226** w/r 5764
NCS S 4500-N LRV 25



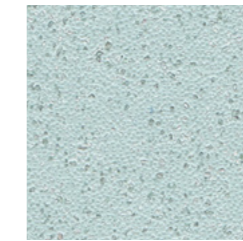
Glacier **5225** w/r 5202
NCS S 2502-B LRV 47



Almond **5223** w/r 5223
NCS S 3005-Y80R LRV 43



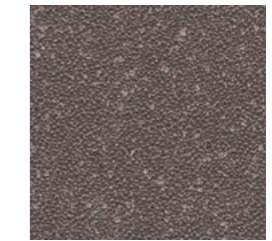
Pebble Shore **5233** w/r 5233
NCS S 5500-N LRV 21



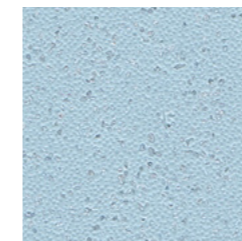
Duck Egg **5235** w/r 5209
NCS S 2010-B30G LRV 50



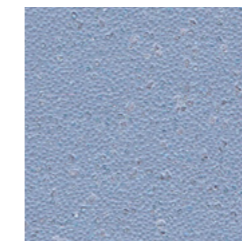
Cappuccino **5224** w/r 5213
NCS S 4010-Y50R LRV 33



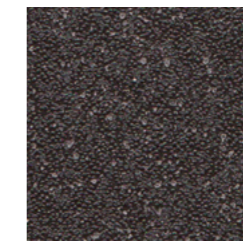
Americano **5234** w/r 5204
NCS S 6502-R LRV 12



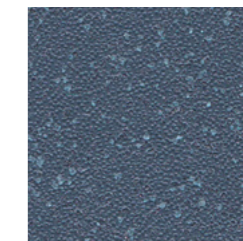
Sea Breeze **5227** w/r 5205
NCS S 2020-B LRV 44



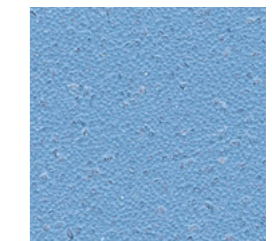
Pacific Blue **5228** w/r 5208
NCS S 3020-R90B LRV 29



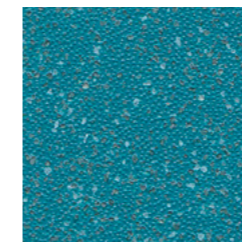
Rich Black **5236** w/r 8640
NCS S 8000-N LRV 7



Midnight Blue **5238** w/r 5207
NCS S 6010-R90B LRV 12



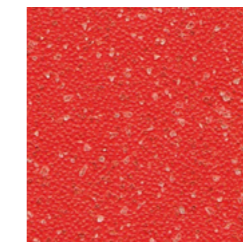
Azure **5229** w/r 5206
NCS S 3030-R90B LRV 31



Neptune **5239** w/r 5239
NCS S 5040-B20G LRV 12



Lemon Drizzle **5241** w/r 9947
NCS S 1070-Y LRV 54



Berry Red **5232** w/r 5232
NCS S 2070-Y90R LRV 14

w/r - Weld Rod

LRV - Light Reflectance Value

NCS - Natural Colour System

HOMOGENEOUS
HETEROGENEOUS
SAFETY
LUXURY VINYL TILES
LOOSE LAY
INTERWOVEN VINYL TILES
ESD
SPORT
SEMI-FLEXIBLE TILES
RUBBER
WALL CLADDING



Polysafe QuickLay PUR

UKCA CE
BS EN 14041 EN 14041

Technical Specification

Product Format

Gauge	ISO 24346 (EN 428)	2.2mm
Total Weight	ISO 23997 (EN 430)	2700g/m ²
Finish		PUR

Performance Requirements

General Performance	EN 13845	Conforms
	ASTM F1303	Conforms
Use Area	ISO 10874 (EN 685)	23, 34, 43
	EN 13845	ESf
Enhanced Slip Resistance	AS 4586 Appendix A	P4
	AS 4586 Appendix D	R11
	RRL Pendulum Test	≥45 (wet test - 4S Rubber / Slider 96)
	DIN 51130 / DIN EN 16165 Ann. B	R11
Surface Roughness	ASTM D2047	Rz ≥20µm SCOF ≥0.8
	EN 13845	50,000 cycles
Abrasion Resistance	EN 13893	Class DS
	EN 13501-1	Class Bfl-S1
Reaction to Fire	ASTM E648	Class 1
	Australian BCA Spec C1.10-3	Complies
	CAN/ULC S102.2	FSV < 300; SDV < 500
	AS ISO 9239-1	>8.0kW/m ²
Static Electrical Propensity	EN 1815	≤2.0kV Classified as 'antistatic'
Residual Indentation	ISO 24343-1 (EN 433)	≤0.10mm
	ASTM F970 (Modified)	≤0.005" (750 psi)
Flexibility	ASTM F137	1.5" Pass
Resistance to Light	ASTM F1515	ΔE ≤ 8.0 - Meets
Resistance to Heat	ASTM F1514	ΔE ≤ 8.0 - Meets
Castor Chair	ISO 4918 (EN 425)	Suitable

Sustainability

BRE Green Guide	A+ Generic
Generic EN 15804 EPD	Available
Recyclable & Reusable	100%
Recycled Content	Contains recycled material
REACH	Compliant
Indoor Air Comfort Gold	Eurofins certified product
FloorScore	Certified
Finnish M1	Certified
AqBB/ABG	Pass

Acoustic Performance

Impact Sound Reduction	ISO 10140-3	10dB
------------------------	-------------	------

Maintenance Performance

Resistance to Chemicals	ISO 26987 (EN 423)	Good
	ASTM F925	Good
Alco Hand Gels	Compatible for use with most commonly used alco-based hand gels	
Steam Cleaning	Suitable for steam cleaning on a periodic basis	

All Polyflor commercial sheet vinyl ranges provide a continuous, impervious and hygienic flooring solution which can be confidently cleaned in accordance with recommended maintenance procedures and approved maintenance products. The implementation of an effective cleaning regime is the most important defence against infection.

Hygiene

Bacterial Resistance	ISO 846 Part C	Does not favour growth
----------------------	----------------	------------------------

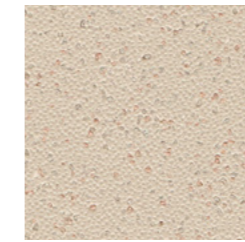
Sheet Size

Format	Size	Shades	Coverage per Roll
Sheet	2m x 20m	12	40m ²

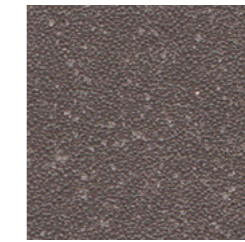
Polysafe QuickLay PUR



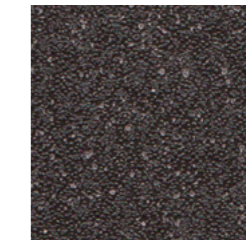
Vanilla **6253**
NCS S 1502-Y w/r 5221 LRV 63



Mocha **6249**
NCS S 3005-Y20R w/r 5212 LRV 43



Americano **6256**
NCS S 6502-R w/r 5204 LRV 12



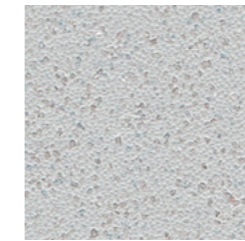
Rich Black **6252**
NCS S 8000-N w/r 8640 LRV 7



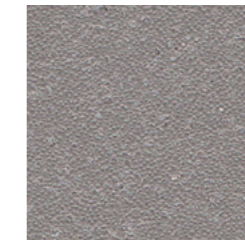
Rock Salt **6251**
NCS S 3000-N w/r 9858 LRV 43



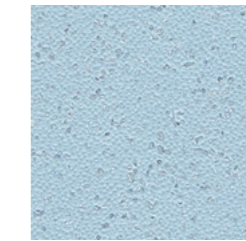
Monsoon **6248**
NCS S 4500-N w/r 5764 LRV 25



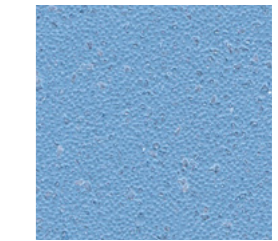
Glacier **6241**
NCS S 2502-B w/r 5202 LRV 47



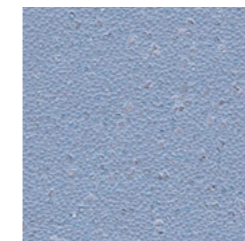
Pebble Shore **6250**
NCS S 5500-N w/r 5233 LRV 21



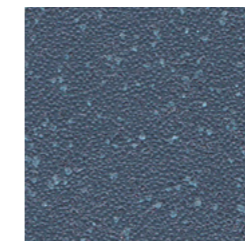
Sea Breeze **6254**
NCS S 2020-B w/r 5205 LRV 44



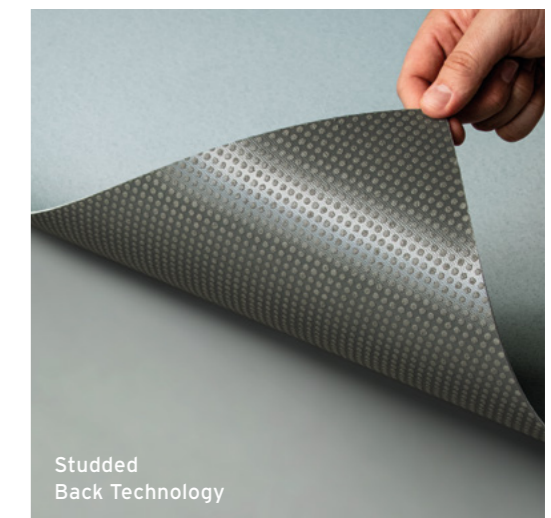
Azure **6255**
NCS S 3030-R90B w/r 5206 LRV 31



Pacific Blue **6244**
NCS S 3020-R90B w/r 5208 LRV 29



Midnight Blue **6245**
NCS S 6010-R90B w/r 5207 LRV 12



Studded Back Technology

w/r - Weld Rod LRV - Light Reflectance Value NCS - Natural Colour System

HOMOGENEOUS
HETEROGENEOUS
SAFETY
LUXURY VINYL TILES
LOOSE LAY
INTERWOVEN VINYL TILES
ESD
SPORT
SEMI-FLEXIBLE TILES
RUBBER
WALL CLADDING

Polysafe Standard PUR



Technical Specification

Product Format

Gauge	ISO 24346 (EN 428)	2.0mm, 2.5mm
Total Weight	ISO 23997 (EN 430)	2.0mm: 2430g/m ² 2.5mm: 3100g/m ²
Finish		PUR

Performance Requirements

General Performance	EN 13845	Conforms
	ASTM F1303	Type II, Grade I, Class B Backing
Use Area	ISO 10874 (EN 685)	23, 34, 43
	EN 13845	ESf
Enhanced Slip Resistance	RRL Pendulum Test	≥36 (wet test - 4S Rubber / Slider 96) R10
	DIN 51130 / DIN EN 16165 Ann. B	
Abrasion Resistance	Surface Roughness ASTM D2047	Rz ≥20µm SCOF ≥0.8
	EN 13845	50,000 cycles
Reaction to Fire	EN 13893	Class DS
	EN 13501-1	Class Bfl-S1
Static Electrical Propensity	ASTM E648	Class 1
	CAN/ULC S102.2	FSV < 300; SDV < 500
Residual Indentation	AS ISO 9239-1	>8.0kW/m ²
	EN 1815	≤2.0kV Classified as 'antistatic'
Flexibility	ASTM F970 (Modified)	≤0.005" (750 psi)
Resistance to Light	ASTM F137	1.5" Pass
Resistance to Heat	ASTM F1515	ΔE ≤ 8.0 - Meets
	ASTM F1514	ΔE ≤ 8.0 - Meets

Sustainability

BRE Green Guide		A+ ENP 472
GreenTag	LCA Rate Gold Plus	GreenRate level A
Generic EN 15804 EPD		Available
Recyclable		100%
Recycled Content		Contains recycled material
REACH		Compliant
Indoor Air Comfort Gold		Eurofins certified product
FloorScore		Certified
Finnish M1		Certified
AqBB/ABG		Pass
Responsible Sourcing	BES 6001	Excellent

Maintenance Performance

Resistance to Chemicals	ISO 26987 (EN 423)	Good
	ASTM F925	Good
Alco Hand Gels	Compatible for use with most commonly used alco-based hand gels	
Steam Cleaning	Suitable for steam cleaning on a periodic basis	

All Polyflor commercial sheet vinyl ranges provide a continuous, impervious and hygienic flooring solution which can be confidently cleaned in accordance with recommended maintenance procedures and approved maintenance products. The implementation of an effective cleaning regime is the most important defence against infection.

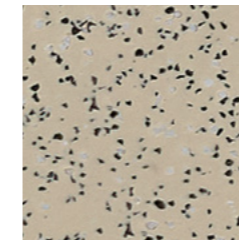
Hygiene

Bacterial Resistance	ISO 846 Part C	Does not favour growth
----------------------	----------------	------------------------

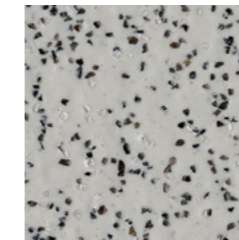
Sheet Sizes

Format	Size	Shades	Coverage per Roll
Sheet	2.0mm: 2m x 20m	16	40m ²
	2.5mm: 2m x 20m	16	40m ²

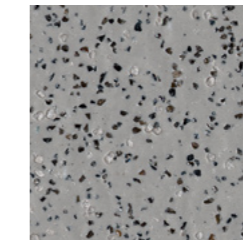
Polysafe Standard PUR



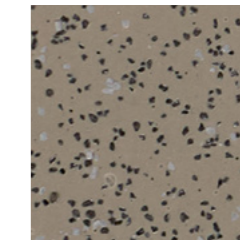
Wild Mushroom **4600** w/r 4630
NCS S 3005-Y20R LRV 39



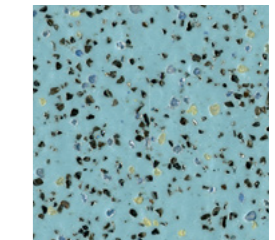
Ash Grey **4540** w/r 2090
NCS S 3502-B LRV 37



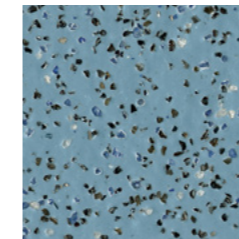
Silver Birch **4020** w/r 9200
NCS S 4500-N LRV 27



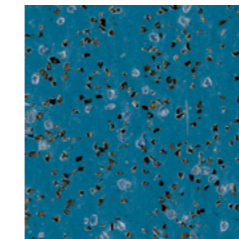
Taupe **4610** w/r 4620
NCS S 5005-Y20R LRV 24



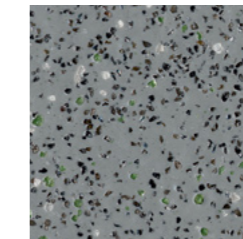
Cool Aqua **4570** w/r 4570
NCS S 3020-B10G LRV 35



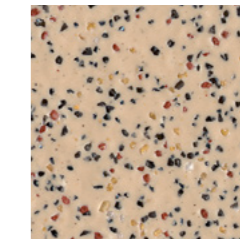
Arctic Blue **4130** w/r 4130
NCS S 4020-B LRV 25



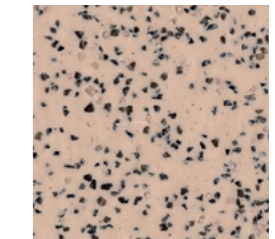
Cedar Blue **4060** w/r 9040
NCS S 5030-B LRV 14



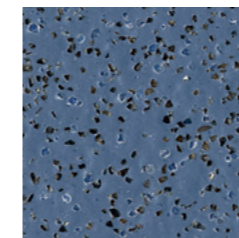
Nordic Grey **4090** w/r 8680
NCS S 5005-B20G LRV 24



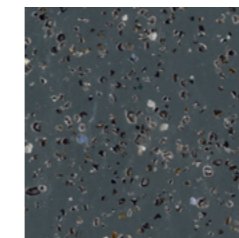
Autumn Beige **4140** w/r 4140
NCS S 3010-Y30R LRV 39



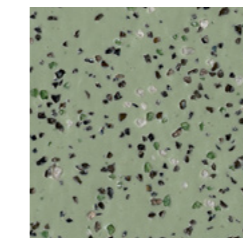
Elmwood **4520** w/r 9610
NCS S 3010-Y60R LRV 39



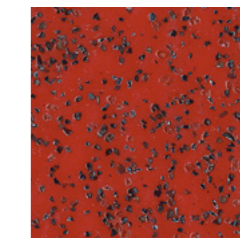
Storm Blue **4560** w/r 4910
NCS S 5020-R80B LRV 15



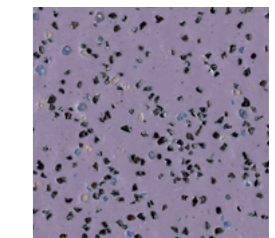
Twilight **4490** w/r 4490
NCS S 7502-B LRV 10



Alpine Green **4110** w/r 4110
NCS S 4010-G30Y LRV 27



Redwood **4040** w/r 9230
NCS S 3060-Y90R LRV 12



Lilac Blue **4580** w/r 4580
NCS S 4020-R60B LRV 23



Black Walnut **4150** w/r 8640
NCS S 8505-Y20R LRV 6

w/r - Weld Rod

LRV - Light Reflectance Value

NCS - Natural Colour System



Polysafe Stone fx PUR



Polysafe Stone fx PUR

Technical Specification

Product Format

Gauge	ISO 24346 (EN 428)	2.0mm
Wear Layer	ISO 24340 (EN 429)	0.70mm
Total Weight	ISO 23997 (EN 430)	2780g/m ²
Finish		PUR

Performance Requirements

General Performance	EN 13845 ASTM F1303	Conforms Conforms
Use Area	ISO 10874 (EN 685)	23, 34, 43
Enhanced Slip Resistance	EN 13845 RRL Pendulum Test	ESf ≥36 (wet test - 4S Rubber / Slider 96)
	DIN 51130 / DIN EN 16165 Ann. B Surface Roughness ASTM D2047	R10 Rz ≥20µm SCOF ≥0.8
Abrasion Resistance	EN 13845 EN 13893	50,000 cycles Class DS
	EN 13501-1 ASTM E648 CAN/ULC S102.2 AS ISO 9239-1	Class Bfl-S1 Class 1 FSV < 300; SDV < 500 >8.0kW/m ²
Static Electrical Propensity	EN 1815	≤2.0kV Classified as 'antistatic'
Residual Indentation	ASTM F970 (Modified)	≤0.005" (750 psi)
Flexibility	ASTM F137	1.5" Pass
Resistance to Light	ASTM F1515	ΔE ≤ 8.0 - Meets
Resistance to Heat	ASTM F1514	ΔE ≤ 8.0 - Meets

Sheet Size

Format	Size	Shades	Coverage per Roll
Sheet	2m x 20m	22	40m ²

Sustainability

BRE Green Guide		A+ ENP 415
Generic EN 15804 EPD		Available
Recyclable		100%
Recycled Content		10%
REACH		Compliant
Indoor Air Comfort Gold		Eurofins certified product
FloorScore		Certified
Finnish M1		Certified
AqBB/ABG		Pass
Responsible Sourcing	BES 6001	Excellent

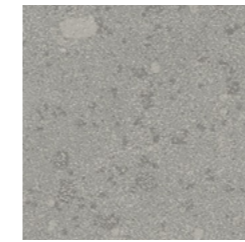
Maintenance Performance

Resistance to Chemicals	ISO 26987 (EN 423) ASTM F925	Good Good
Alco Hand Gels	Compatible for use with most commonly used alco-based hand gels	
Steam Cleaning	Suitable for steam cleaning on a periodic basis	

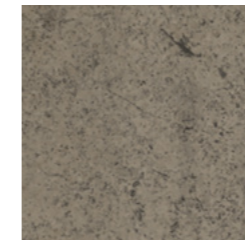
All Polyflor commercial sheet vinyl ranges provide a continuous, impervious and hygienic flooring solution which can be confidently cleaned in accordance with recommended maintenance procedures and approved maintenance products. The implementation of an effective cleaning regime is the most important defence against infection.

Hygiene

Bacterial Resistance	ISO 846 Part C	Does not favour growth
----------------------	----------------	------------------------



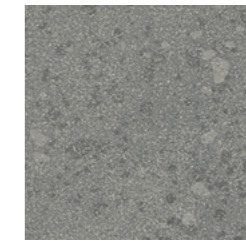
Dove Slate **6012**
NCS S 3502-G w/r 6012 LRV 35



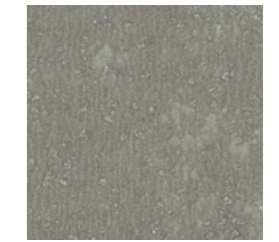
Urban Concrete **6013**
NCS S 5502-Y w/r 6013 LRV 24



Jurassic Stone **6011**
NCS S 4500-N w/r 6011 LRV 22



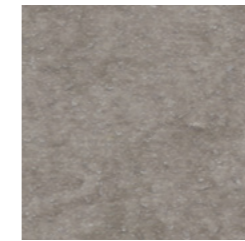
Natural Slate **6014**
NCS S 4502-G w/r 6014 LRV 22



Dark Concrete **5089**
NCS S 5502-Y w/r 5089 LRV 23



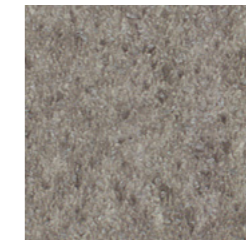
Flagstone Grey **5091**
NCS S 4005-Y50R w/r 5091 LRV 35



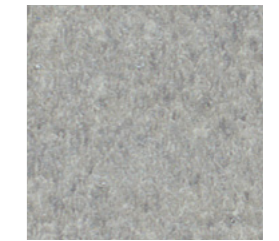
Clay Stone **5092**
NCS S 5005-Y80R w/r 5092 LRV 25



Light Concrete **5087**
NCS S 4005-G80Y w/r 5087 LRV 33



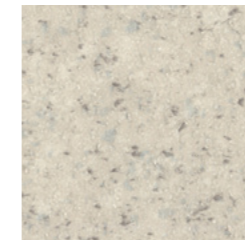
Deep Fossil **5082**
NCS S 5502-Y w/r 5082 LRV 22



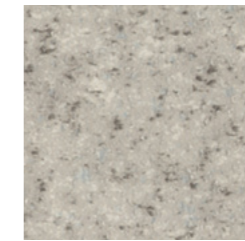
Pebble Grey **5083**
NCS S 4000-N w/r 5083 LRV 34



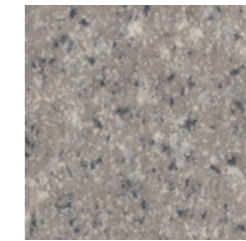
Muted Stone **5081**
NCS S 2005-Y50R w/r 5081 LRV 46



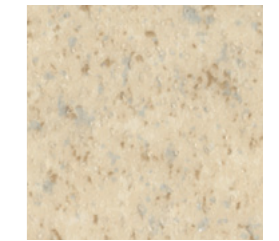
Grey Flourite **4042**
NCS S 2002-Y50R w/r 9803 LRV 48



Agate Grey **4043**
NCS S 3500-N w/r 9804 LRV 38



Galena **4047**
NCS S 4502-R w/r 9807 LRV 27



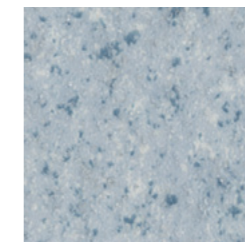
Gypsum **4044**
NCS S 2005-Y30R w/r 9800 LRV 50



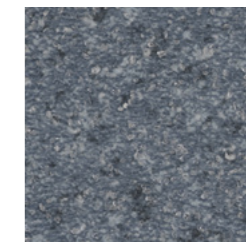
Copal **4046**
NCS S 3010-Y20R w/r 9801 LRV 39



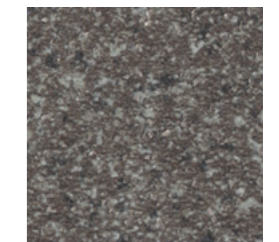
Andesite **4049**
NCS S 4005-Y50R w/r 9802 LRV 26



Angelite **4051**
NCS S 3010-R90B w/r 9806 LRV 40



Blue Quartz **4054**
NCS S 6010-R90B w/r 9808 LRV 17



Jetstone **4045**
NCS S 6500-N w/r 9805 LRV 15



Pearl River **5084**
NCS S 1000-N w/r 5084 LRV 63



Valley Rock **5086**
NCS S 7005-Y20R w/r 5086 LRV 14

w/r - Weld Rod LRV - Light Reflectance Value NCS - Natural Colour System

HOMOGENEOUS
HETEROGENEOUS
SAFETY
LUXURY VINYL TILES
LOOSE LAY
INTERWOVEN VINYL TILES
ESD
SPORT
SEMI-FLEXIBLE TILES
RUBBER
WALL CLADDING



Polysafe Wood fx PUR

Technical Specification

Product Format

Gauge	ISO 24346 (EN 428)	2.0mm
Wear Layer	ISO 24340 (EN 429)	0.70mm
Total Weight	ISO 23997 (EN 430)	2780g/m ²
Finish		PUR

Performance Requirements

General Performance	EN 13845 ASTM F1303	Conforms Type I, Grade I, Class B Backing
Use Area	ISO 10874 (EN 685)	23, 34, 43
Enhanced Slip Resistance	EN 13845 RRL Pendulum Test DIN 51130 / DIN EN 16165 Ann. B AS 4586 Surface Roughness ASTM D2047	ESf ≥36 (wet test - 4S Rubber / Slider 96) R10 R10 Rz ≥20µm SCOF ≥0.8
Abrasion Resistance	EN 13845 EN 13893	50,000 cycles Class DS
Reaction to Fire	EN 13501-1 ASTM E648 CAN/ULC S102.2 AS ISO 9239-1	Class Bfl-S1 Class 1 FSV < 300; SDV < 500 >8.0kW/m ²
Static Electrical Propensity	EN 1815	≤2.0kV Classified as 'antistatic'
Residual Indentation	ASTM F970 (Modified)	≤0.005" (750 psi)
Flexibility	ASTM F137	1.5" Pass
Resistance to Light	ASTM F1515	ΔE ≤ 8.0 - Meets
Resistance to Heat	ASTM F1514	ΔE ≤ 8.0 - Meets

Sheet Size

Format	Size	Shades	Coverage per Roll
Sheet	2m x 20m	16	40m ²

Sustainability

BRE Green Guide		A+ ENP 415
GreenTag	LCA Rate Gold Plus	GreenRate level A
Generic EN 15804 EPD		Available
Recyclable		100%
Recycled Content		10%
REACH		Compliant
Indoor Air Comfort Gold		Eurofins certified product
FloorScore		Certified
Finnish M1		Certified
AqBB/ABG		Pass
Responsible Sourcing	BES 6001	Excellent

Maintenance Performance

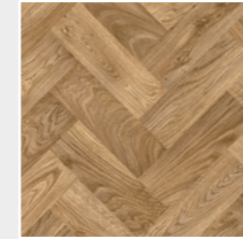
Resistance to Chemicals	ISO 26987 (EN 423) ASTM F925	Good Good
Alco Hand Gels	Compatible for use with most commonly used alco-based hand gels	
Steam Cleaning	Suitable for steam cleaning on a periodic basis	

All Polyflor commercial sheet vinyl ranges provide a continuous, impervious and hygienic flooring solution which can be confidently cleaned in accordance with recommended maintenance procedures and approved maintenance products. The implementation of an effective cleaning regime is the most important defence against infection.

Hygiene

Bacterial Resistance	ISO 846 Part C	Does not favour growth
----------------------	----------------	------------------------

PARQUET DESIGNS



Eton Oak Parquet 3392*
plank size in sheet: 76.2 x 288.6mm
w/r 9822 LRV 24



Parish Oak Parquet 3391*
plank size in sheet: 76.2 x 288.6mm
w/r 9841 LRV 32



Newport Oak 3394
plank size in sheet: 167 x 1500mm
w/r 9838 LRV 30



Blanched Oak 3397
plank size in sheet: 200 x 1000mm
w/r 3113 LRV 42



Oslo Oak 3396
plank size in sheet: 167 x 1500mm
w/r 9829 LRV 32



Sun Bleached Oak 3372*
plank size in sheet: 200 x 1500mm
w/r 3372 LRV 31



Silver Oak 3357*
plank size in sheet: 83 x 333/666mm
w/r 3237 LRV 23



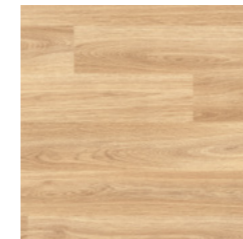
Oiled Oak 3374
plank size in sheet: 166 x 1500mm
w/r 3374 LRV 37



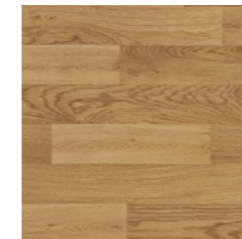
Roasted Limed Ash 3375
plank size in sheet: 166 x 1500mm
w/r 9831 LRV 30



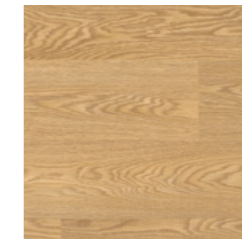
Tropical Pine 3376
plank size in sheet: 166 x 1500mm
w/r 9822 LRV 22



American Oak 3387*
plank size in sheet: 100 x 1000mm
w/r 3380 LRV 37



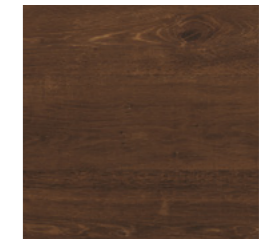
Rustic Oak 3337*
plank size in sheet: 83 x 333/666mm
w/r 3330 LRV 26



Classic Oak 3107
plank size in sheet: 166 x 1500mm
w/r 3330 LRV 29



European Oak 3347*
plank size in sheet: 100 x 1000mm
w/r 3340 LRV 23



Aged Oak 3373*
plank size in sheet: 200 x 1500mm
w/r 9824 LRV 9



Nero Oak 3371
plank size in sheet: 125 x 1000mm
w/r 9842 LRV 7



Polysafe Wood fx Acoustix PUR



Technical Specification

Product Format

Gauge	ISO 24346 (EN 428)	3.7mm
Wear Layer	ISO 24340 (EN 429)	0.65mm
Total Weight	ISO 23997 (EN 430)	2670g/m ²
Finish	PUR	

Performance Requirements

General Performance	ISO 11638 (EN 651)	Conforms
Use Area	ISO 10874 (EN 685)	23, 34, 42
Enhanced Slip Resistance	EN 13845	ESf
	AS 4586	R10
	RRL Pendulum Test	≥36 (wet test - 4S Rubber / Slider 96)
Abrasion Resistance	Surface Roughness	Rz ≥20µm
	EN 13845	50,000 cycles
Reaction to Fire	EN 13501-1	Class Bfl-S1
	ASTM E648	Class 1
	CAN/ULC S102.2	FSV < 300; SDV < 500
Static Electrical Propensity	EN 1815	≤2.0kV Classified as 'antistatic'
Residual Indentation	ISO 24343-1	≤0.20mm

Sustainability

BRE Green Guide	A+ ENP 415	
GreenTag	LCA Rate Silver Plus	GreenRate level A
Generic EN 15804 EPD	Available	
Recyclable	100%	
Recycled Content	10%	
REACH	Compliant	
Indoor Air Comfort Gold	Eurofins certified product	
FloorScore	Certified	
AqBB/ABG	Pass	
Responsible Sourcing	BES 6001	Excellent

Acoustic Performance

Impact Sound Reduction	ISO 10140-3	19dB
------------------------	-------------	------

Maintenance Performance

Resistance to Chemicals	ISO 26987 (EN 423)	Good
Alco Hand Gels	Compatible for use with most commonly used alco-based hand gels	
Steam Cleaning	Suitable for steam cleaning on a periodic basis	

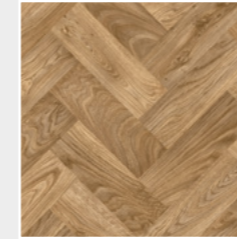
All Polyflor commercial sheet vinyl ranges provide a continuous, impervious and hygienic flooring solution which can be confidently cleaned in accordance with recommended maintenance procedures and approved maintenance products. The implementation of an effective cleaning regime is the most important defence against infection.

Sheet Size

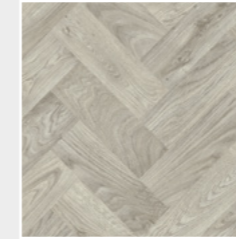
Format	Size	Shades	Coverage per Roll
Sheet	2m x 20m	8	40m ²

Polysafe Wood fx Acoustix PUR

PARQUET DESIGNS



Eton Oak Parquet 3399
plank size in sheet: 76.2 x 288.6mm
w/r 9822 LRV 24



Parish Oak Parquet 3398
plank size in sheet: 76.2 x 288.6mm
w/r 9841 LRV 32



American Oak 3382
plank size in sheet: 100 x 1000mm
w/r 3380 LRV 37



Sun Bleached Oak 3384
plank size in sheet: 200 x 1500mm
w/r 3372 LRV 31



Rustic Oak 3332
plank size in sheet: 83 x 333/666mm
w/r 3330 LRV 26



Silver Oak 3352
plank size in sheet: 83 x 333/666mm
w/r 3237 LRV 23



European Oak 3342
plank size in sheet: 100 x 1000mm
w/r 3340 LRV 23



Aged Oak 3389
plank size in sheet: 200 x 1500mm
w/r 9824 LRV 9

w/r - Weld Rod

LRV - Light Reflectance Value

HOMOGENEOUS
 HETEROGENEOUS
 SAFETY
 LUXURY VINYL TILES
 LOOSE LAY
 INTERWOVEN VINYL TILES
 ESD
 SPORT
 SEMI-FLEXIBLE TILES
 RUBBER
 WALL CLADDING



Polysafe Mosaic PUR



Technical Specification

Product Format

Gauge	ISO 24346 (EN 428)	2.0mm
Wear Layer	ISO 24340 (EN 429)	0.70mm
Total Weight	ISO 23997 (EN 430)	2400g/m ²
Finish		PUR

Performance Requirements

General Performance	EN13845 ASTM F1303	Conforms Conforms
Use Area	ISO 10874 (EN 685)	23, 34, 43
Enhanced Slip Resistance	EN 13845 RRL Pendulum Test	ESf ≥36 (wet test - 4S Rubber / Slider 96)
	DIN 51130 / DIN EN 16165 Ann. B	R10
	Surface Roughness ASTM D2047	Rz ≥20µm SCOF ≥0.8
Abrasion Resistance	EN 13845 EN 13893	50,000 cycles Class DS
	EN 13501-1 ASTM E648	Class Bfl-S1 Class 1
Reaction to Fire	CAN/ULC S102.2 AS ISO 9239-1	FSV < 300; SDV < 500 >8.0kW/m ²
	Static Electrical Propensity	EN 1815
Flexibility	ASTM F137	Conforms
Resistance to Light	ASTM F1515	ΔE ≤ 8.0 - Meets
Resistance to Heat	ASTM F1514	ΔE ≤ 8.0 - Meets

Sustainability

BRE Green Guide		A+ ENP 472
GreenTag	LCA Rate Gold Plus	GreenRate level A
Generic EN 15804 EPD		Available
Recyclable		100%
Recycled Content		Contains recycled material
REACH		Compliant
Indoor Air Comfort Gold		Eurofins certified product
FloorScore		Certified
Finnish M1		Certified
AgBB/ABG		Pass
Responsible Sourcing	BES 6001	Excellent

Maintenance Performance

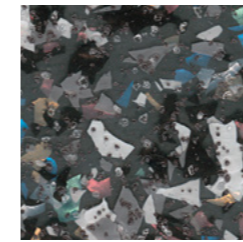
Resistance to Chemicals	ISO 26987 (EN 423)	Good
	ASTM F925	Good
Alco Hand Gels	Compatible for use with most commonly used alco-based hand gels	
Steam Cleaning	Suitable for steam cleaning on a periodic basis	

All Polyflor commercial sheet vinyl ranges provide a continuous, impervious and hygienic flooring solution which can be confidently cleaned in accordance with recommended maintenance procedures and approved maintenance products. The implementation of an effective cleaning regime is the most important defence against infection.

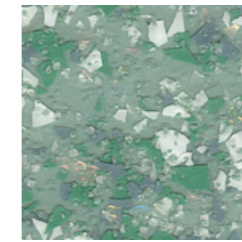
Sheet Size

Format	Size	Shades	Coverage per Roll
Sheet	2m x 20m	10	40m ²

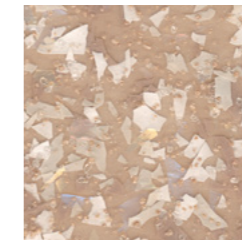
Polysafe Mosaic PUR



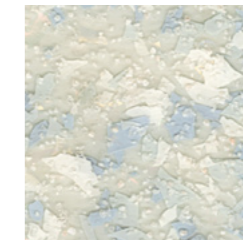
Graphite Pearl **4165** w/r 4165
NCS S 6500-N LRV 18



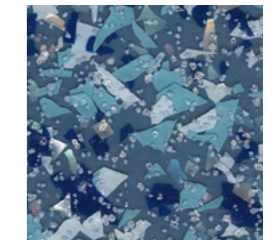
Green Opal **4195** w/r 4195
NCS S 4010-G10Y LRV 34



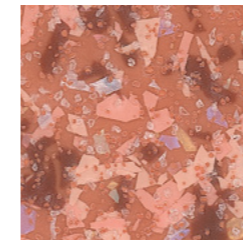
Earthstone **4155** w/r 4155
NCS S 3010-Y40R LRV 39



Pearlite **4115** w/r 4115
NCS S 2005-G70Y LRV 55



South Sea **4175** w/r 4175
NCS S 5020-R90B LRV 19



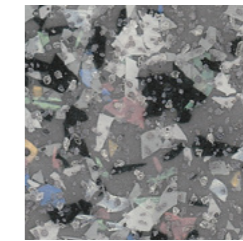
Sunstone **4185** w/r 4185
NCS S 3030-Y70R LRV 24



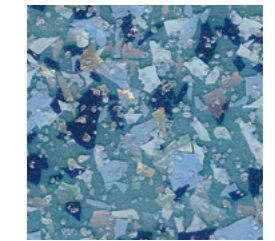
Akoya **4125** w/r 4125
NCS S 3010-Y20R LRV 41



Grey Fusion **4105** w/r 4105
NCS S 3502-Y LRV 39



Orient Grey **4135** w/r 4135
NCS S 5500-N LRV 23



Freshwater **4145** w/r 4145
NCS S 4020-B10G LRV 25

w/r - Weld Rod

LRV - Light Reflectance Value

NCS - Natural Colour System

HOMOGENEOUS
 HETEROGENEOUS
 SAFETY
 LUXURY VINYL TILES
 LOOSE LAY
 INTERWOVEN VINYL TILES
 ESD
 SPORT
 SEMI-FLEXIBLE TILES
 RUBBER
 WALL CLADDING

Polysafe Vogue Ultra PUR



Technical Specification

Product Format

Gauge	ISO 24346 (EN 428)	2.0mm
Total Weight	ISO 23997 (EN 430)	2400g/m ²
Finish		PUR

Performance Requirements

General Performance	EN 13845	Conforms
	ASTM F1303	Type II, Grade I, Class B Backing
Use Area	ISO 10874 (EN 685)	23, 34, 43
	EN 13845 RRL Pendulum Test	ESf ≥36 (wet test - 4S Rubber / Slider 96)
Enhanced Slip Resistance	DIN 51130 / DIN EN 16165 Ann. B	R10
	Surface Roughness ASTM D2047	Rz ≥20µm SCOF ≥0.8
Abrasion Resistance	EN 13845	50,000 cycles
	EN 13893	Class DS
Reaction to Fire	EN 13501-1	Class Bfl-S1
	ASTM E648	Class 1
	CAN/ULC S102.2 AS ISO 9239-1	FSV < 300; SDV < 500 >8.0kW/m ²
Static Electrical Propensity	EN 1815	≤2.0kV Classified as 'antistatic'
Residual Indentation	ASTM F970 (Modified)	≤0.005" (750 psi)
Flexibility	ASTM F137	1.5" Pass
Resistance to Light	ASTM F1515	ΔE ≤ 8.0 - Meets
Resistance to Heat	ASTM F1514	ΔE ≤ 8.0 - Meets

Sustainability

BRE Green Guide		A+ ENP 472
GreenTag	LCA Rate Gold Plus	GreenRate level A
Generic EN 15804 EPD		Available
Recyclable		100%
Recycled Content		Contains recycled material
REACH		Compliant
Indoor Air Comfort Gold		Eurofins certified product
FloorScore		Certified
Finnish M1		Certified
AqBB/ABG		Pass
Responsible Sourcing	BES 6001	Excellent

Maintenance Performance

Resistance to Chemicals	ISO 26987 (EN 423)	Good
	ASTM F925	Good
Alco Hand Gels	Compatible for use with most commonly used alco-based hand gels	
Steam Cleaning	Suitable for steam cleaning on a periodic basis	

All Polyflor commercial sheet vinyl ranges provide a continuous, impervious and hygienic flooring solution which can be confidently cleaned in accordance with recommended maintenance procedures and approved maintenance products. The implementation of an effective cleaning regime is the most important defence against infection.

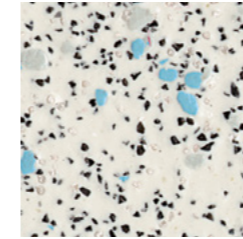
Hygiene

Bacterial Resistance	ISO 846 Part C	Does not favour growth
----------------------	----------------	------------------------

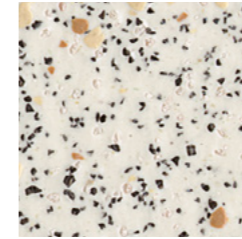
Sheet Size

Format	Size	Shades	Coverage per Roll
Sheet	2m x 20m	18	40m ²

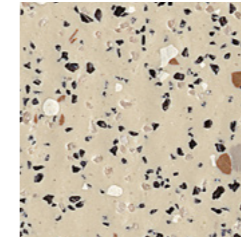
Polysafe Vogue Ultra PUR



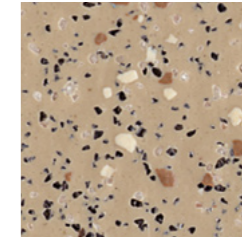
Snowstorm **4835** w/r 4930
NCS S 2500-N LRV 49



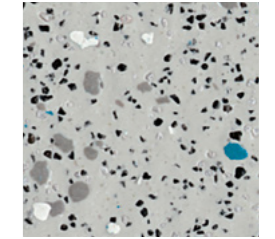
Bisque **4860** w/r 4860
NCS S 2002-Y50R LRV 48



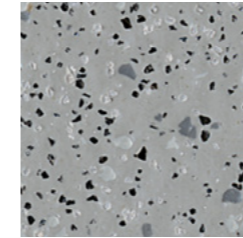
Barley **5500** w/r 5500
NCS S 3005-Y20R LRV 42



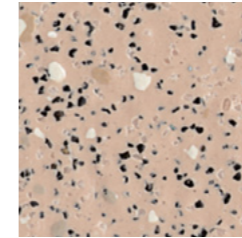
Toffee **4825** w/r 4825
NCS S 4010-Y30R LRV 30



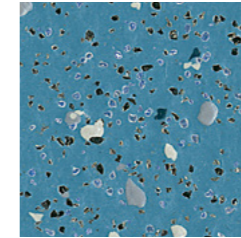
Whirlpool **4805** w/r 5570
NCS S 3500-N LRV 37



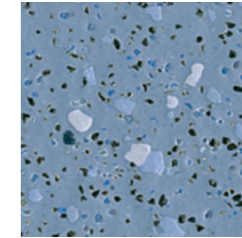
Woodland Grey **4770** w/r 9120
NCS S 4500-N LRV 30



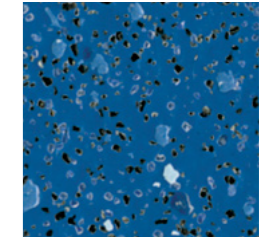
Oystershell **4800** w/r 2010
NCS S 3010-Y60R LRV 41



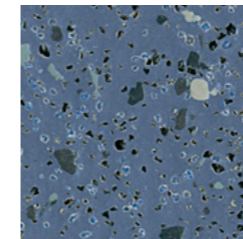
Marine **4870** w/r 4700
NCS S 4030-B LRV 22



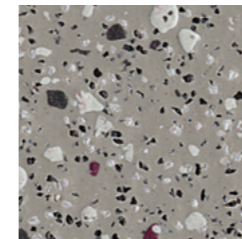
Bluebell **5510** w/r 5510
NCS S 4020-R80B LRV 23



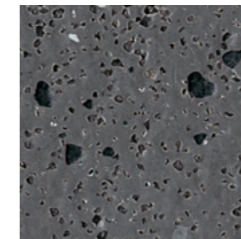
Seawater **5490** w/r 5490
NCS S 5030-R90B LRV 15



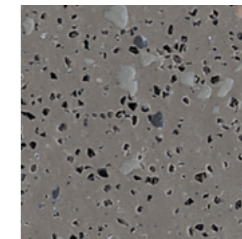
Steel Blue **4740** w/r 4910
NCS S 5020-R80B LRV 14



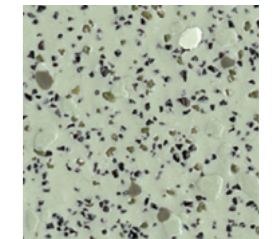
Winter Dusk **4730** w/r 9120
NCS S 5500-N LRV 23



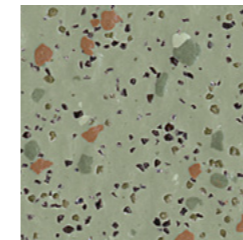
Blackbird **5560** w/r 5560
NCS S 7500-N LRV 11



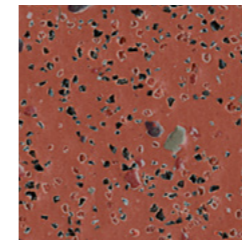
Nightsky **4760** w/r 4760
NCS S 6500-N LRV 17



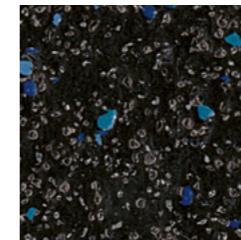
Grasshopper **5540** w/r 5540
NCS S 3010-G30Y LRV 37



Forest Pine **4500** w/r 4350
NCS S 5005-G50Y LRV 24



Firestar **4790** w/r 4640
NCS S 5030-Y80R LRV 16



Galactic **4815** w/r 8640
NCS S 8502-B LRV 6

w/r - Weld Rod

LRV - Light Reflectance Value

NCS - Natural Colour System



Polysafe Astral PUR

Technical Specification

Product Format

Gauge	ISO 24346 (EN 428)	2.0mm
Total Weight	ISO 23997 (EN 430)	2450g/m ²
Finish		PUR

Performance Requirements

General Performance	EN 13845 ASTM F1303	Conforms Conforms
Use Area	ISO 10874 (EN 685)	23, 34, 43
	EN 13845	ESf
	RRL Pendulum Test	≥36 (wet test - 4S Rubber / Slider 96)
Enhanced Slip Resistance	DIN 51130 / DIN EN 16165 Ann. B	R10
	Surface Roughness	Rz ≥20µm
	ASTM D2047	SCOF ≥0.8
Abrasion Resistance	EN 13845 EN 13893	50,000 cycles Class DS
	EN 13501-1	Class Bfl-S1
Reaction to Fire	ASTM E648 CAN/ULC S102.2 AS ISO 9239-1	Class 1 FSV < 300; SDV < 500 >8.0kW/m ²
Static Electrical Propensity	EN 1815	≤2.0kV Classified as 'antistatic'

Sheet Size

Format	Size	Shades	Coverage per Roll
Sheet	2m x 20m	14	40m ²

Sustainability

BRE Green Guide		A+ ENP 472
GreenTag	LCA Rate Gold Plus	GreenRate level A
Generic EN 15804 EPD		Available
Recyclable		100%
Recycled Content		Contains recycled material
REACH		Compliant
Indoor Air Comfort Gold		Eurofins certified product
FloorScore		Certified
Finnish M1		Certified
AqBB/ABG		Pass
Responsible Sourcing	BES 6001	Excellent

Maintenance Performance

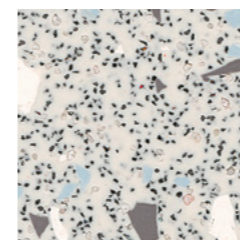
Resistance to Chemicals	ISO 26987 (EN 423)	Good
Alco Hand Gels	Compatible for use with most commonly used alco-based hand gels	
Steam Cleaning	Suitable for steam cleaning on a periodic basis	

All Polyflor commercial sheet vinyl ranges provide a continuous, impervious and hygienic flooring solution which can be confidently cleaned in accordance with recommended maintenance procedures and approved maintenance products. The implementation of an effective cleaning regime is the most important defence against infection.

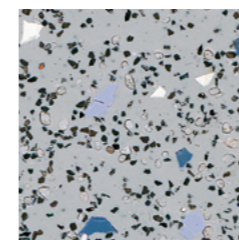
Hygiene

Bacterial Resistance	ISO 846 Part C	Does not favour growth
----------------------	----------------	------------------------

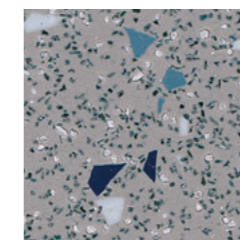
Polysafe Astral PUR



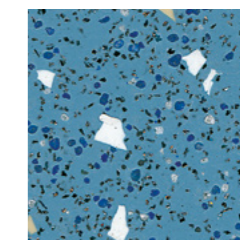
North Star **4370** w/r 4930
NCS S 2002-G50Y LRV 52



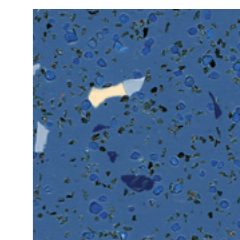
Feldspar **4620** w/r 2090
NCS S 3502-B LRV 35



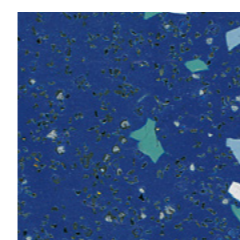
Starburst **4300** w/r 4940
NCS S 4500-N LRV 26



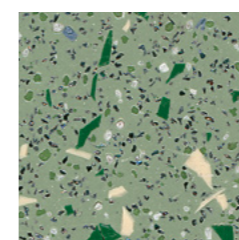
Calcite Blue **4460** w/r 4130
NCS S 4020-B LRV 23



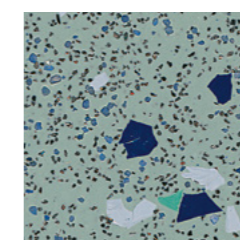
Deep Sapphire **4050** w/r 4910
NCS S 5020-R80B LRV 14



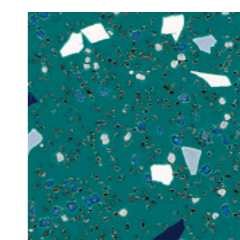
Nebula Blue **4200** w/r 4850
NCS S 5030-R80B LRV 12



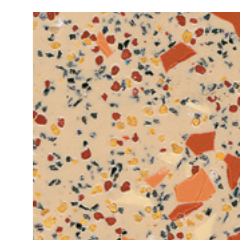
Greenstone **4440** w/r 4110
NCS S 4010-G30Y LRV 26



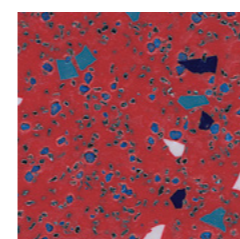
Isis **4380** w/r 4960
NCS S 4010-B70G LRV 29



Aquarius **4220** w/r 4890
NCS S 4040-B50G LRV 17



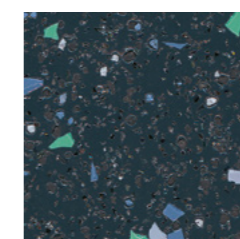
Arkose **4190** w/r 4140
NCS S 3010-Y40R LRV 38



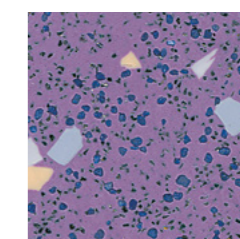
Red Sky **4310** w/r 4830
NCS S 4040-Y90R LRV 14



Lunar Grey **4240** w/r 4900
NCS S 7502-G LRV 12



Black Opal **4080** w/r 4490
NCS S 7502-B LRV 9



Space Mauve **4230** w/r 4840
NCS S 4030-R50B LRV 18

w/r - Weld Rod

LRV - Light Reflectance Value

NCS - Natural Colour System

Expona Control PUR



Technical Specification

Product Format

Gauge	ISO 24346 (EN 428)	2.5mm
Wear Layer	ISO 24340 (EN 429)	0.70mm
Total Weight	ISO 23997 (EN 430)	4290g/m ²
Finish	PUR	

Performance Requirements

General Performance	ISO 10582 (EN 649)	Conforms
Use Area	ISO 10874 (EN 685)	23, 34, 43
Enhanced Slip Resistance	EN 13845	Esf
	RRL Pendulum Test	≥36 (wet test - 4S Rubber/Slider 96)
	DIN 51130 / DIN EN 16165 Ann. B	R10
Surface Roughness	ASTM D2047	Rz >20µm
	ASTM D2047	SCOF ≥0.8
Binder Content	EN ISO 10582	Type I
Abrasion Resistance	EN 13845	50,000 cycles
	EN 13893	Class DS
Reaction to Fire	EN 13501-1	Class Bfl-S1
	ASTM E648	Class 1
	CAN/ULC S102.2	FSV < 300; SDV < 500
	AS ISO 9239-1	>8.0 kW/m ²
Static Electrical Propensity	EN 1815	≤2.0kV Classified as 'antistatic'
Residual Indentation	ISO 24343-1 (EN 433)	≤0.05mm*
Dimensional Stability	ISO 23999 (EN 434)	≤0.10% max
Underfloor Heating	Suitable, max 27°C	
Light Fastness	ISO 105-B02 (Method 3)	≥6
Castor Chair (continuous use)	ISO 4918 (EN 425)	Suitable

*Average test value from current production.

Sustainability

BRE Green Guide	A+ ENP 429	
GreenTag	LCA Rate Gold Plus	GreenRate level A
Generic EN 15804 EPD	Available	
Recyclable	100%	
Recycled Content	40%	
REACH	Compliant	
Indoor Air Comfort Gold	Eurofins certified product	
FloorScore	Certified	
Finnish M1	Certified	
AqBB/ABG	Pass	
Responsible Sourcing	BES 6001	Very Good
	SA 8000	Approved factory

Acoustic Performance

Impact Sound Reduction	ISO 10140-3	2dB
------------------------	-------------	-----

Maintenance Performance

Resistance to Chemicals	ISO 26987 (EN 423)	Good
-------------------------	--------------------	------

Regular light maintenance is more cost-effective than periodic heavy maintenance and more beneficial to the floor covering.

Plank & Tile Sizes

Format	Size	Shades	Quantity per Box	Coverage per Box
Plank	152.4mm x 914.4mm	7	24	3.34m ²

Format	Size	Shades	Quantity per Box	Coverage per Box
Tile	304.8mm x 609.6mm	2	18	3.34m ²
	457.2mm x 457.2mm	5	16	3.34m ²

152.4mm x 914.4mm 6" x 36"



American Oak **6500** LRV 31



White Oak **6505** LRV 48



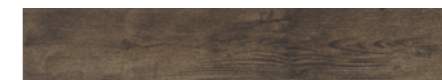
Blond Country Plank **6501** LRV 28



Light Elm **6506** LRV 23



Nut Tree **6502** LRV 30



Weathered Country Plank **6504** LRV 11



Classic Oak **6503** LRV 23

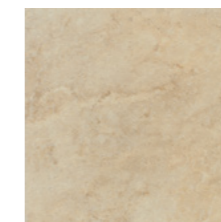
457.2mm x 457.2mm 18" x 18"



Portland Stone **7500** LRV 51



Classic Limestone **7501** LRV 47



Classic Yorkstone **7502** LRV 44

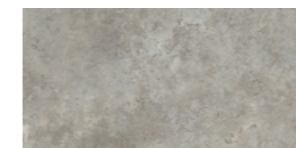


Smoked Limestone **7503** LRV 37



Warm Grey Concrete **7504** LRV 21

304.8mm x 609.6mm 12" x 24"



Roman Limestone **7506** LRV 33



Cambrian Stone **7507** LRV 24

LRV - Light Reflectance Value

TECHNICAL SPECIFICATIONS: WET ROOMS

TECHNICAL DATA	STANDARDS	Polysafe Quattro PUR	Polysafe Hydro Evolve	Polysafe Hydro
Product Format				
Gauge	ISO 24346 (EN 428)	2.0mm	2.0mm	2.0mm
Sheet Size	ISO 24341 (EN 426)	2m x 20m	2m x 20m	2m x 20m
Total Weight	ISO 23997 (EN 430)	2700g/m ²	2960g/m ²	2910g/m ²
Finish		PUR	-	-

Performance Requirements

General Performance	EN 13845	Conforms	Conforms	Conforms
	ASTM F1303	Type II, Grade I, Class B Backing	Type II, Grade I, Class B Backing	Type II, Grade I, Class B Backing
Use Area	ISO 10874 (EN 685)	23, 34, 43	23, 34, 43	23, 34, 43
Enhanced Slip Resistance	EN 13845	ESb & ESf	ESb & ESf	ESb & ESf
	RRL Pendulum Test	≥50 (wet test - 4S Rubber / Slider 96)	≥36 (wet test - Slider 55/96)	≥36 (wet test - Slider 55/96)
	DIN 51097 / DIN EN 16165 Ann. A	Class B	Class B	Class B
	DIN 51130 / DIN EN 16165 Ann. B	R11	R10	R10
	Surface Roughness	Rz ≥20µm	Rz ≥20µm	Rz ≥20µm
	ASTM D2047	SCOF≥0.8	SCOF≥0.8	SCOF≥0.8
Abrasion Resistance	EN 13845	50,000 cycles	50,000 cycles	50,000 cycles
	EN 13893	Class DS	Class DS	Class DS
Reaction to Fire	EN 13501-1	Class Bfl-S1	Class Bfl-S1	Class Bfl-S1
	ASTM E648	Class 1	Class 1	Class 1
	CAN/ULC S102.2	FSV < 300; SDV < 500	FSV < 300; SDV < 500	FSV < 300; SDV < 500
Static Electrical Propensity	EN 1815	≤2.0kV Classified as 'antistatic'	≤2.0kV Classified as 'antistatic'	≤2.0kV Classified as 'antistatic'
Water Tightness	EN 13553	Annex A	Annex A	Annex A

Sustainability

BRE Green Guide		A+ ENP 472	A+ ENP 472	A+ ENP 472
Indoor Air Comfort Gold		Eurofins certified product	Eurofins certified product	Eurofins certified product
FloorScore		Certified	Certified	Certified
Finnish M1		Certified	Certified	Certified
AgBB/ABG		Pass	Pass	Pass
Responsible Sourcing	BES 6001	Excellent	Excellent	Excellent

Maintenance Performance

Resistance to Chemicals	ISO 26987 (EN 423)	Good resistance	Good resistance	Good resistance
-------------------------	--------------------	-----------------	-----------------	-----------------

All Polyflor commercial sheet vinyl ranges provide a continuous, impervious and hygienic flooring solution which can be confidently cleaned in accordance with recommended maintenance procedures and approved maintenance products. The implementation of an effective cleaning regime is the most important defence against infection.

The wet slip resistance across all Polysafe products is sustainable throughout the guaranteed life of the product, with strict adherence to Health & Safety Executive (HSE) guidelines.

SAFETY FLOORING



The flooring must not only look good, but also perform well, so that it is impermeable, hygienic and safe.



Polysafe Quattro PUR

UK CA CE
BS EN 14041 EN 14041

Polysafe Quattro PUR

Technical Specification

Product Format

Gauge	ISO 24346 (EN 428)	2.0mm
Total Weight	ISO 23997 (EN 430)	2700g/m ²
Finish		PUR

Performance Requirements

General Performance	EN 13845 ASTM F1303	Conforms Type II, Grade I, Class B Backing	
Use Area	ISO 10874 (EN 685)	23, 34, 43	
Enhanced Slip Resistance	EN 13845 RRL Pendulum Test	ESb & ESf ≥50 (wet test - 4S Rubber / Slider 96)	
	DIN 51097 / DIN EN 16165 Ann. A DIN 51130 / DIN EN 16165 Ann. B	Class B R11	
	Surface Roughness ASTM D2047 AS 4586 Appendix C AS 4586 Appendix D	Rz ≥20µm SCOF ≥0.8 Class B R11	
	Abrasion Resistance	EN 13845 EN 13893	50,000 cycles Class DS
	EN 13501-1 ASTM E648	Class Bfl-S1 Class 1	
Reaction to Fire	Australian BCA Spec C1.10-3 CAN/ULC S102.2 AS ISO 9239-1	Complies FSV < 300; SDV < 500 >8.0kW/m ²	
Static Electrical Propensity	EN 1815	≤2.0kV Classified as 'antistatic'	
Water Tightness	EN 13553	Annex A	
Residual Indentation	ASTM F970 (Modified)	≤0.005" (750 psi)	

Performance Requirements (Continued)

Flexibility	ASTM F137	1.5" Pass
Resistance to Light	ASTM F1515	ΔE ≤ 8.0 - Meets
Resistance to Heat	ASTM F1514	ΔE ≤ 8.0 - Meets

Sustainability

BRE Green Guide		A+ ENP 472
GreenTag	LCA Rate Gold Plus	GreenRate level A
Generic EN 15804 EPD		Available
Recyclable		100%
Recycled Content		Contains recycled material
REACH		Compliant
Indoor Air Comfort Gold		Eurofins certified product
FloorScore		Certified
Finnish M1		Certified
AgBB/ABG		Pass
Responsible Sourcing	BES 6001	Excellent

Maintenance Performance

Resistance to Chemicals	ISO 26987 (EN 423) ASTM F925	Good Good
Alco Hand Gels	Compatible for use with most commonly used alco-based hand gels	
Steam Cleaning	Suitable for steam cleaning on a periodic basis	

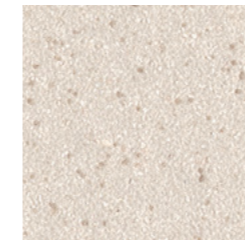
All Polyflor commercial sheet vinyl ranges provide a continuous, impervious and hygienic flooring solution which can be confidently cleaned in accordance with recommended maintenance procedures and approved maintenance products. The implementation of an effective cleaning regime is the most important defence against infection.

Hygiene

Bacterial Resistance	ISO 846 Part C	Does not favour growth
----------------------	----------------	------------------------

Sheet Size

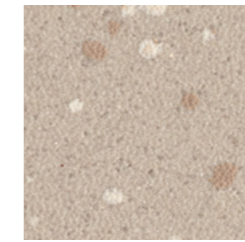
Format	Size	Shades	Coverage per Roll
Sheet	2m x 20m	12	40m ²



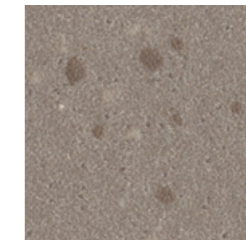
Chalk Dune **5766** w/r 5766
NCS S 1502-Y50R LRV 60



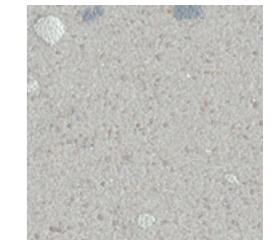
Lunar Shell **5772** w/r 5772
NCS S 1502-Y LRV 64



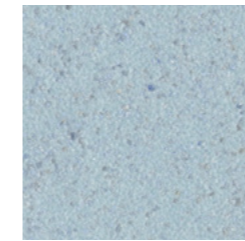
Barley Cove **5761** w/r 5212
NCS S 3005-Y50R LRV 47



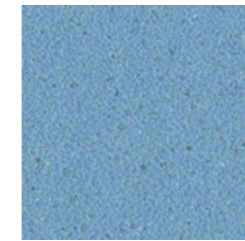
Truffle Shore **5762** w/r 5762
NCS S 5005-Y50R LRV 24



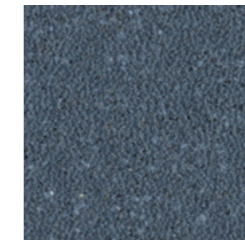
Sea Spray **5763** w/r 5202
NCS S 3000-N LRV 49



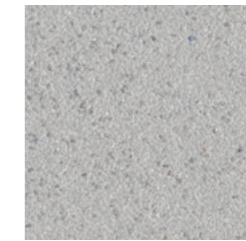
Sea Mist **5768** w/r 5205
NCS S 2010-B LRV 46



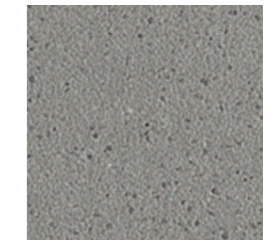
Calm Azure **5770** w/r 5206
NCS S 2030-R90B LRV 31



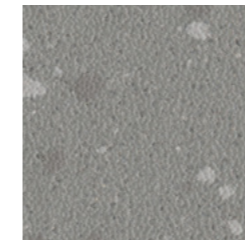
Deep Lagoon **5771** w/r 5207
NCS S 6010-R90B LRV 12



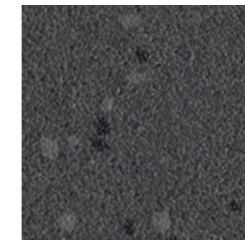
Cool Pebble **5767** w/r 2090
NCS S 3000-N LRV 46



Slate Haze **5773** w/r 5764
NCS S 5000-N LRV 26



Coastal Flint **5764** w/r 5764
NCS S 4500-N LRV 26



Granite Sky **5765** w/r 4490
NCS S 7502-B LRV 10

w/r - Weld Rod

LRV - Light Reflectance Value

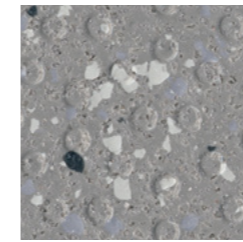
NCS - Natural Colour System



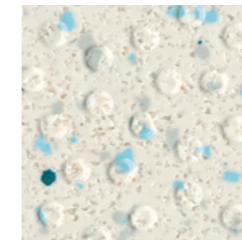
Polysafe Hydro Evolve



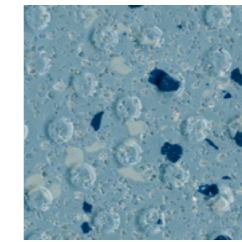
Polysafe Hydro Evolve



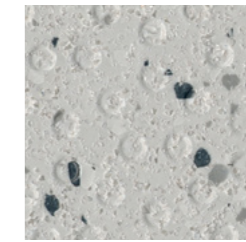
Tigris 4257
NCS S 4500-N w/r 4257 LRV 28



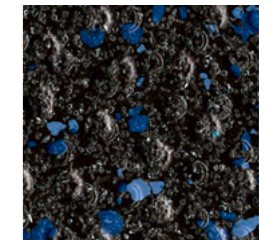
Indus 4251
NCS S 1502-Y w/r 4251 LRV 58



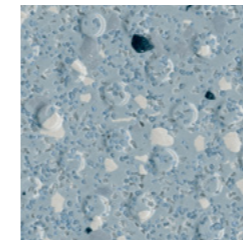
Adriatic 4258
NCS S 3030-B w/r 4258 LRV 27



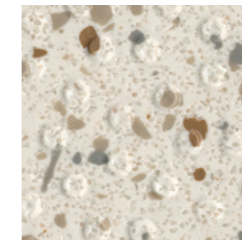
Colorado 4253
NCS S 3000-N w/r 4253 LRV 44



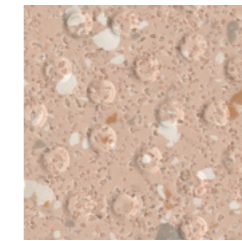
Black Volta 4255
NCS S 8000-N w/r 4255 LRV 6



Blue Nile 4256
NCS S 3010-R90B w/r 4256 LRV 34



Amazon 4252
NCS S 1502-Y50R w/r 4252 LRV 59



Danube 4254
NCS S 2010-Y60R w/r 4254 LRV 42

Technical Specification

Product Format

Gauge	ISO 24346 (EN 428)	2.0mm
Total Weight	ISO 23997 (EN 430)	2960g/m ²

Performance Requirements

General Performance	EN 13845	Conforms
	ASTM F1303	Type II, Grade I, Class B
Use Area	ISO 10874 (EN 685)	23, 34, 43
	EN 13845	ESb & ESf
Enhanced Slip Resistance	RRL Pendulum Test	≥36 (wet test - Slider 55/96)
	DIN 51097 /	Class B
	DIN EN 16165 Ann. A	R10
	DIN 51130 /	
	DIN EN 16165 Ann. B	
Abrasion Resistance	Surface Roughness	Rz ≥20µm
	ASTM D2047	SCOF ≥0.8
	AS 4586 Appendix C	Class B
Reaction to Fire	EN 13845	50,000 cycles
	EN 13893	Class DS
Static Electrical Propensity	EN 13501-1	Class Bfl-S1
	ASTM E648	Class 1
	CAN/ULC S102.2	FSV < 300; SDV < 500
	AS ISO 9239-1	>8.0kW/m ²
Water Tightness	EN 1815	≤2.0kV Classified as 'antistatic'
Residual Indentation	EN 13553	Annex A
Flexibility	ASTM F970 (Modified)	≤0.005" (750 psi)
Resistance to Light	ASTM F137	1.5" Pass
Resistance to Heat	ASTM F1515	ΔE ≤ 8.0 - Meets
	ASTM F1514	ΔE ≤ 8.0 - Meets

Sustainability

BRE Green Guide	A+ ENP 472
Generic EN 15804 EPD	Available
Recyclable	100%
Recycled Content	Contains recycled material
REACH	Compliant
Indoor Air Comfort Gold	Eurofins certified product
FloorScore	Certified
Finnish M1	Certified
AqBB/ABG	Pass
Responsible Sourcing	BES 6001 Excellent

Maintenance Performance

Resistance to Chemicals	ISO 26987 (EN 423)	Good
	ASTM F925	Good
Alco Hand Gels	Compatible for use with most commonly used alco-based hand gels	
Steam Cleaning	Suitable for steam cleaning on a periodic basis	

All Polyflor commercial sheet vinyl ranges provide a continuous, impervious and hygienic flooring solution which can be confidently cleaned in accordance with recommended maintenance procedures and approved maintenance products. The implementation of an effective cleaning regime is the most important defence against infection.

Hygiene

Bacterial Resistance	ISO 846 Part C	Does not favour growth
----------------------	----------------	------------------------

Sheet Size

Format	Size	Shades	Coverage per Roll
Sheet	2m x 20m	8	40m ²

w/r - Weld Rod

LRV - Light Reflectance Value

NCS - Natural Colour System

HOMOGENEOUS
 HETEROGENEOUS
 SAFETY
 LUXURY VINYL TILES
 LOOSE LAY
 INTERWOVEN VINYL TILES
 ESD
 SPORT
 SEMI-FLEXIBLE TILES
 RUBBER
 WALL CLADDING



Polysafe Hydro



Polysafe Hydro

Technical Specification

Product Format

Gauge	ISO 24346 (EN 428)	2.0mm
Total Weight	ISO 23997 (EN 430)	2910g/m ²

Performance Requirements

General Performance	EN 13845	Conforms
	ASTM F1303	Type II, Grade I, Class B
Use Area	ISO 10874 (EN 685)	23, 34, 43
	EN 13845	ESb & ESf
Enhanced Slip Resistance	RRL Pendulum Test	≥36 (wet test - Slider 55/96)
	DIN 51097 /	Class B
	DIN EN 16165 Ann. A	R10
	DIN 51130 /	
	DIN EN 16165 Ann. B	Surface Roughness
ASTM D2047	SCOF ≥0.8	
Abrasion Resistance	AS 4586 Appendix C	Class B
	EN 13845	50,000 cycles
Reaction to Fire	EN 13893	Class DS
	EN 13501-1	Class Bfl-S1
Static Electrical Propensity	ASTM E648	Class 1
	CAN/ULC S102.2	FSV < 300; SDV < 500
Water Tightness	EN 1815	≤2.0kV Classified as 'antistatic'
Residual Indentation	EN 13553	Annex A
Flexibility	ASTM F970 (Modified)	≤0.005" (750 psi)
Resistance to Light	ASTM F137	1.5" Pass
Resistance to Heat	ASTM F1515	ΔE ≤ 8.0 - Meets
	ASTM F1514	ΔE ≤ 8.0 - Meets

Sustainability

BRE Green Guide	A+ ENP 472
GreenTag	LCA Rate Silver Plus
Generic EN 15804 EPD	GreenRate level A
Recyclable	Available
Recycled Content	100%
REACH	Contains recycled material
Indoor Air Comfort Gold	Compliant
FloorScore	Eurofins certified product
Finnish M1	Certified
AqBB/ABG	Pass
Responsible Sourcing	BES 6001
	Excellent

Maintenance Performance

Resistance to Chemicals	ISO 26987 (EN 423)	Good
	ASTM F925	Good
Alco Hand Gels	Compatible for use with most commonly used alco-based hand gels	
Steam Cleaning	Suitable for steam cleaning on a periodic basis	

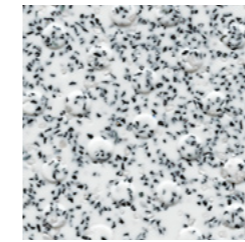
All Polyflor commercial sheet vinyl ranges provide a continuous, impervious and hygienic flooring solution which can be confidently cleaned in accordance with recommended maintenance procedures and approved maintenance products. The implementation of an effective cleaning regime is the most important defence against infection.

Hygiene

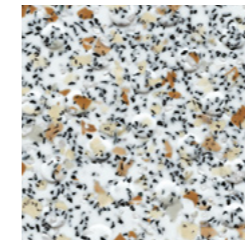
Bacterial Resistance	ISO 846 Part C	Does not favour growth
----------------------	----------------	------------------------

Sheet Size

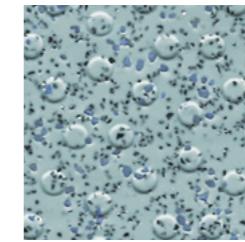
Format	Size	Shades	Coverage per Roll
Sheet	2m x 20m	8	40m ²



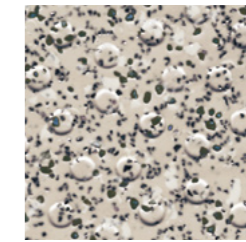
White Stone **H4930** w/r 4930
NCS S 2000-N LRV 44



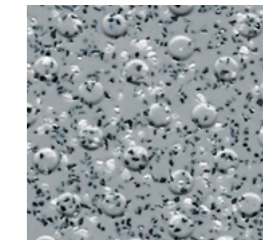
Bisque **H4860** w/r 4860
NCS S 2002-Y50R LRV 46



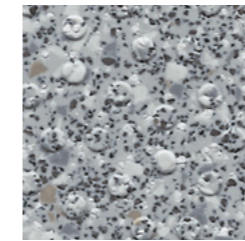
Sheared Slate **H4960** w/r 4960
NCS S 4010-B50G LRV 26



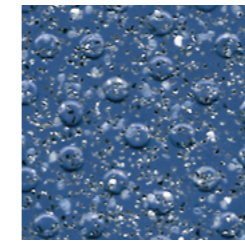
Oystershell **H4800** w/r 2010
NCS S 3010-Y60R LRV 34



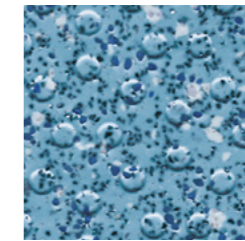
Tempered Steel **H4940** w/r 4940
NCS S 4502-B LRV 25



Woodland Grey **H4770** w/r 9120
NCS S 4500-N LRV 28



Blue Forge **H4850** w/r 4850
NCS S 5030-R70B LRV 9



Marine **H4870** w/r 4700
NCS S 4030-B LRV 19

w/r - Weld Rod

LRV - Light Reflectance Value

NCS - Natural Colour System

TECHNICAL SPECIFICATIONS: COMMERCIAL KITCHENS

TECHNICAL DATA	STANDARDS	Polysafe Apex	Polysafe Ultima
----------------	-----------	---------------	-----------------

Product Format

Gauge	ISO 24346 (EN 428)	2.5mm	2.5mm
Sheet Size	ISO 24341 (EN 426)	2m x 20m	2m x 20m
Total Weight	ISO 23997 (EN 430)	3150g/m ²	3000g/m ²

Performance Requirements

General Performance	EN 13845	Conforms	Conforms
	ASTM F1303	Type II, Grade I, Class B Backing	Conforms
Use Area	ISO 10874 (EN 685)	23, 34, 43	23, 34, 43
Enhanced Slip Resistance	EN 13845	ESf	ESb & ESf
	RRL Pendulum Test	>45 (wet test - 4S Rubber / Slider 96)	≥40 (wet test - 4S Rubber / Slider 96) ≥36 (wet test - TRL Rubber/Slider 55)
	DIN 51097 / DIN EN 16165 Ann. A	-	Class B
	DIN 51130 / DIN EN 16165 Ann. B	R12	R11
	ASTM D2047	SCOF≥0.8	-
Abrasion Resistance	EN 13845	50,000 cycles	50,000 cycles
	EN 13893	Class DS	Class DS
Reaction to Fire	EN 13501-1	Class Bfl-S1	Class Bfl-S1
	ASTM E648	Class 1	Class 1
	CAN/ULC S102.2	FSV < 300; SDV < 500	-
Static Electrical Propensity	EN 1815	≤2.0kV Classified as 'antistatic'	≤2.0kV Classified as 'antistatic'
Water Tightness	EN 13553	-	Annex A

Sustainability

BRE Green Guide		A+ ENP 472	A+ ENP 472
Indoor Air Comfort Gold		Eurofins certified product	Eurofins certified product
FloorScore		Certified	Certified
Finnish M1		Certified	Certified
AgBB/ABG		Pass	Pass
Responsible Sourcing	BES 6001	Excellent	Excellent

Maintenance Performance

Resistance to Chemicals	ISO 26987 (EN 423)	Good resistance	Good resistance
-------------------------	--------------------	-----------------	-----------------

All Polyflor commercial sheet vinyl ranges provide a continuous, impervious and hygienic flooring solution which can be confidently cleaned in accordance with recommended maintenance procedures and approved maintenance products. The implementation of an effective cleaning regime is the most important defence against infection.

The wet slip resistance across all Polysafe products is sustainable throughout the guaranteed life of the product, with strict adherence to Health & Safety Executive (HSE) guidelines.



Products in this category are designed to offer maximum slip resistance in extreme conditions, due to continuous contamination of the floor.



Polysafe Apex

Polysafe Apex

Technical Specification

Product Format

Gauge	ISO 24346 (EN 428)	2.5mm
Total Weight	ISO 23997 (EN 430)	3150g/m ²

Performance Requirements

General Performance	EN 13845	Conforms
	ASTM F1303	Type II, Grade I, Class B Backing
Use Area	ISO 10874 (EN 685)	23, 34, 43
	EN 13845	ESf
Enhanced Slip Resistance	RRL Pendulum Test	≥45 (wet test - 4S Rubber / Slider 96)
	DIN 51130 / DIN EN 16165 Ann. B	R12
	UNE-ENV 12633	Class 3 (Slider 96)
Abrasion Resistance	EN 13845	50,000 cycles
	EN 13893	Class DS
Reaction to Fire	EN 13501-1	Class Bfl-S1
	ASTM E648	Class 1
	CAN/ULC S102.2 AS ISO 9239-1	FSV < 300; SDV < 500 Complies
Static Electrical Propensity	EN 1815	≤2.0kV Classified as 'antistatic'
Residual Indentation	ASTM F970 (Modified)	≤0.005" (750 psi)
Resistance to Light	ASTM F1515	ΔE ≤ 8.0 - Meets

Sustainability

BRE Green Guide	A+ ENP 472
GreenTag	LCA Rate Silver Plus GreenRate level A
Generic EN 15804 EPD	Available
Recyclable	100%
Recycled Content	Contains recycled material
REACH	Compliant
Indoor Air Comfort Gold	Eurofins certified product
FloorScore	Certified
Finnish M1	Certified
AqBB/ABG	Pass
Responsible Sourcing	BES 6001 Excellent

Maintenance Performance

Resistance to Chemicals	ISO 26987 (EN 423)	Good
	ASTM F925	Good
Alco Hand Gels	Compatible for use with most commonly used alco-based hand gels	
Steam Cleaning	Suitable for steam cleaning on a periodic basis	

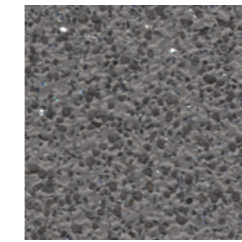
All Polyflor commercial sheet vinyl ranges provide a continuous, impervious and hygienic flooring solution which can be confidently cleaned in accordance with recommended maintenance procedures and approved maintenance products. The implementation of an effective cleaning regime is the most important defence against infection.

Hygiene

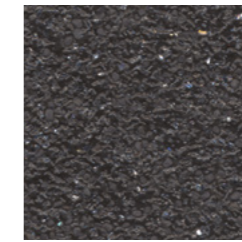
Bacterial Resistance	ISO 846 Part C	Does not favour growth
----------------------	----------------	------------------------

Sheet Size

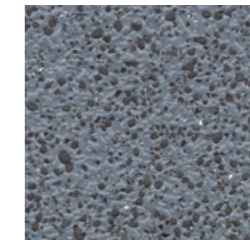
Format	Size	Shades	Coverage per Roll
Sheet	2m x 20m	6	40m ²



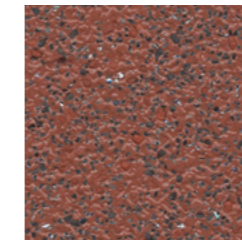
Chromite 4202 w/r 4610
NCS S 6500-N LRV 15



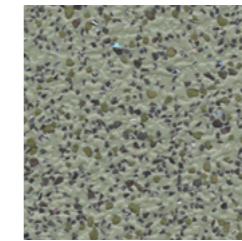
Biotite 4203 w/r 8640
NCS S 8000-N LRV 6



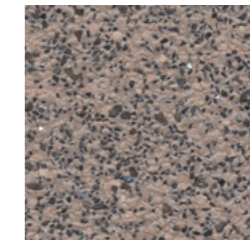
Breccia 4204 w/r 4670
NCS S 5010-R90B LRV 18



Red Ochre 4206 w/r 4206
NCS S 5030-Y80R LRV 13



Green Quartz 4201 w/r 4350
NCS S 5005-G50Y LRV 24



Siltstone 4205 w/r 4600
NCS S 5005-Y80R LRV 23

w/r - Weld Rod

LRV - Light Reflectance Value

NCS - Natural Colour System



Polysafe Ultima



Polysafe Ultima

Technical Specification

Product Format

Gauge	ISO 24346 (EN 428)	2.5mm
Total Weight	ISO 23997 (EN 430)	3000g/m ²

Performance Requirements

General Performance	EN 13845 ASTM F1303	Conforms Conforms
Use Area	ISO 10874 (EN 685)	23, 34, 43
Enhanced Slip Resistance	EN 13845 RRL Pendulum Test	ESb & ESf ≥40 (wet test - 4S Rubber / Slider 96)
	DIN 51097 / DIN EN 16165 Ann. A	≥36 (wet test - TRL Rubber/Slider 55)
	DIN 51130 / DIN EN 16165 Ann. B	R11 Class B
Abrasion Resistance	EN 13845 EN 13893	50,000 cycles Class DS
Reaction to Fire	EN 13501-1 ASTM E648	Class Bfl-S1 Class 1
Static Electrical Propensity	EN 1815	≤2.0kV Classified as 'antistatic'
Water Tightness	EN 13553	Annex A
Residual Indentation	ASTM F970 (Modified)	≤0.005" (750 psi)

Sustainability

BRE Green Guide	A+ ENP 472
Generic EN 15804 EPD	Available
Recyclable	100%
Recycled Content	Contains recycled material
REACH	Compliant
Indoor Air Comfort Gold	Eurofins certified product
FloorScore	Certified
Finnish M1	Certified
AqBB/ABG	Pass
Responsible Sourcing	BES 6001 Excellent

Maintenance Performance

Resistance to Chemicals	ISO 26987 (EN 423)	Good
Alco Hand Gels	Compatible for use with most commonly used alco-based hand gels	
Steam Cleaning	Suitable for steam cleaning on a periodic basis	

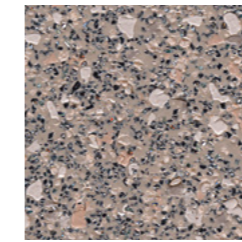
All Polyflor commercial sheet vinyl ranges provide a continuous, impervious and hygienic flooring solution which can be confidently cleaned in accordance with recommended maintenance procedures and approved maintenance products. The implementation of an effective cleaning regime is the most important defence against infection.

Hygiene

Bacterial Resistance	ISO 846 Part C	Does not favour growth
----------------------	----------------	------------------------

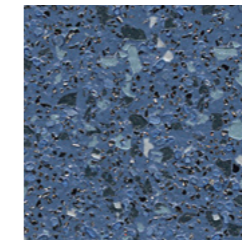
Sheet Size

Format	Size	Shades	Coverage per Roll
Sheet	2m x 20m	6	40m ²



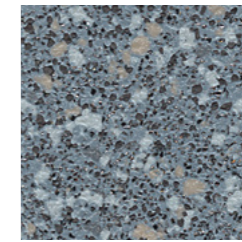
Mortar **4360**
NCS S 5005-Y80R

w/r 4205
LRV 23



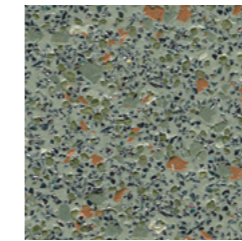
Bluestone **4390**
NCS S 5020-R80B

w/r 4910
LRV 14



Pearl Granite **4330**
NCS S 5010-R90B

w/r 4670
LRV 19



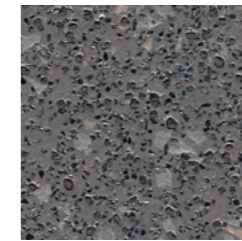
Baltic Green **4350**
NCS S 5005-G50Y

w/r 4350
LRV 23



Iron Ore **4340**
NCS S 6020-Y80R

w/r 4206
LRV 12



Aurora Grey **4290**
NCS S 6000-N

w/r 4760
LRV 15

w/r - Weld Rod

LRV - Light Reflectance Value

NCS - Natural Colour System