

Specification Sheet No

PSA  
57

Description

EJC65 EXPANSION JOINT  
COVER

Date

MAY  
2024

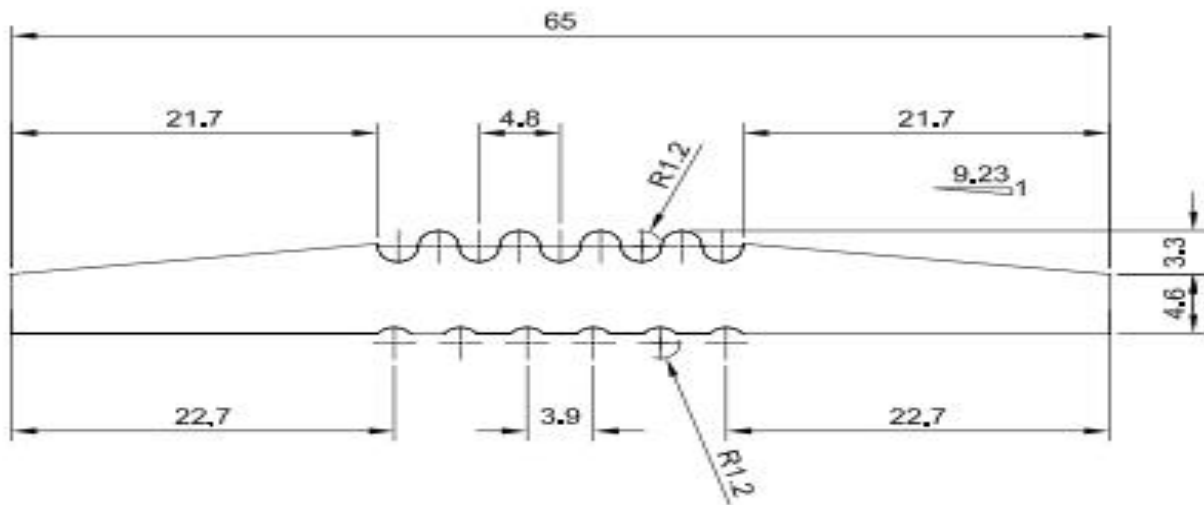
### ARCHITECTURAL SPECIFICATION / BOQ

#### SPECIFICATION:

Supply and install fully flexible 65mm x 2mm with a 20mm expandable strip in the centre for application over filled expansion joint(maximum 6mm) with a movement allowance of +1/-1 and with a weld capability to the sheeting/tile on either side of the expansion joint.

Colour:

Code:



**ELEVATION ON EJC65 - SINGLE PART**

SCALE 1:1

### SPECIALIST FLOORING & WALL PROTECTION PARTNER

Tel: 011 609 3500 | Email: [marketing@polyflor.co.za](mailto:marketing@polyflor.co.za) | [www.polyflor.co.za](http://www.polyflor.co.za)  
Poly Sales House, 8B Buwbes Road North, Sebenza, 1609, South Africa. PO Box 3967, Edenvale, 1610, South Africa

Poly Sales Africa (Pty) Ltd. trading as Polyflor South Africa. Company Registration 2004/012256/07

**INSTALLATION: (PLEASE NOTE: ALWAYS USE COMPATIBLE PRODUCTS FROM ONE SUPPLIER)**

Ensure that all surfaces are firm, dry, and free of dust, grease, and oil. All painted surfaces must be stripped back, and wire brushed to remove all traces of paint.

Always observe the adhesive manufacturer's instructions. Pay attention to use of solvent-based adhesives, especially regarding ventilation and possible sources of ignition.

Apply Polyflor recommended contact adhesive to both surfaces, allow adhesive to flash off and then adhere coving to area where the floor meets the wall. Apply pressure to create a firm bond.

All fitting work must be carried out accurately prior to application of adhesive, as movement afterwards is restricted. Adjustments for length should always be made on straight joints –never on mitred sections – unless the length of the wall does not permit this.

Fill the expansion joint slot with an approved polysulphide or similar suitable sealer as may be required to seal the joint where applicable while still allowing movement between the surfaces.

Push an appropriate fibreboard(hardboard) or cork cut to size in a suitable thickness on edge to fit tightly in the joint, giving the capability to support the EJC65 expansion joint cover.

**MAINTENANCE:**

Excess adhesive can be removed with an appropriate solvent such as Polyflor Powerclean if necessary. As a principle, aggressive solvents should be avoided as these may affect the expansion joint cover, leaving dull spots. More powerful detergents such as PRO-INOX from Industroclean can be used to remove persistent soiling which is not removed by the initial clean.

Two coats of a matt sealer can be applied to as per the manufacturer's instructions.

Wipe with a damp cloth where required using a neutral detergent such as PROCLEAN.

We recommend that professional maintenance product suppliers be approached to determine the specific maintenance requirements for the application. Industroclean who supply the Pro range of products can be contacted directly on (011) 801 4600.

**This program will keep maintenance costs to a minimum.**