

Polysafe™ Verona PUR



ORIGINAL

RRL-Pendulum Test
36+
Sustainable Slip Resistance

P3
AS 4586

PURE COLOURS

RRL-Pendulum Test
45+
Sustainable Slip Resistance

P4
AS 4586

ADVANCED DESIGN WITH **SAFETY ASSURED**

The choice of floor covering is essential in creating secure and hygienic surroundings, encouraging an uplifting environment and having a positive impact on all that use the space. Polysafe Verona is designed to create a safe yet attractive interior, combining subtle pastel shades mixed with stronger accent hues and safety aggregates which are virtually invisible to the eye. Engineered to provide slip resistance which is sustainable and assured through the products guaranteed life, Polysafe Verona is made up of the ORIGINAL and PURE COLOURS collections.

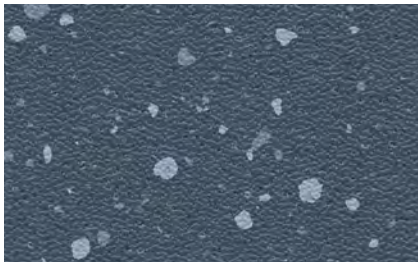


PURE COLOURS



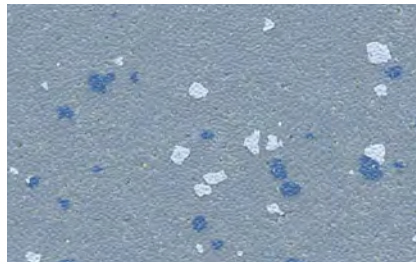
ORIGINAL





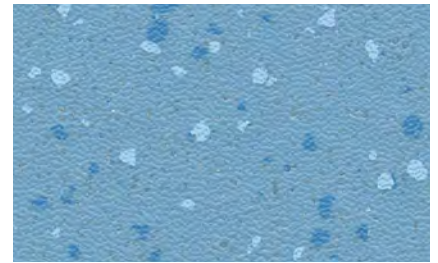
Nightfall 5207
NCS S 6010-R90B

w/r 5207
LRV 12



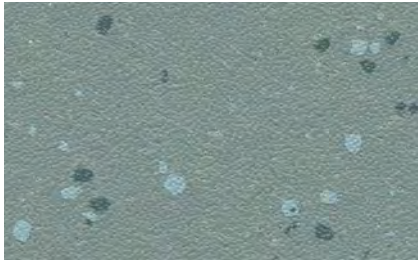
Horizon Blue 5208
NCS S 3020-R90B

w/r 5208
LRV 31



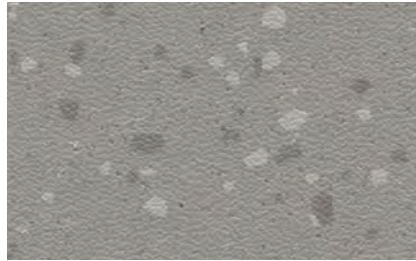
Blue Lagoon 5206
NCS S 2030-R90B

w/r 5206
LRV 32



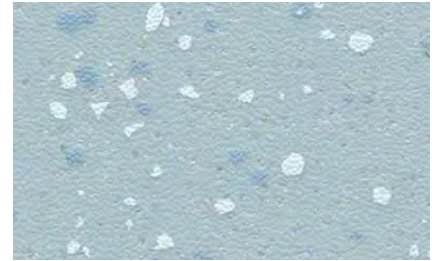
Seagrass 5211
NCS S 4010-B50G

w/r 5211
LRV 25



Dolphin Grey 5203
NCS S 4500-N

w/r 5203
LRV 26



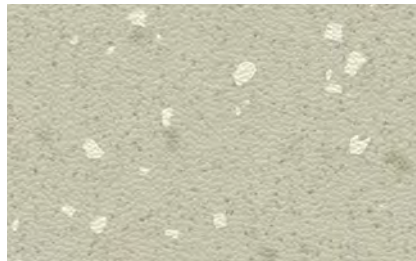
Skyline 5205
NCS S 2010-B

w/r 5205
LRV 47



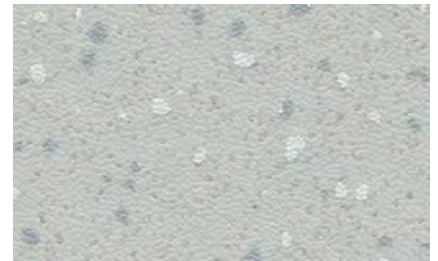
Freshmint 5209
NCS S 2010-B30G

w/r 5209
LRV 52



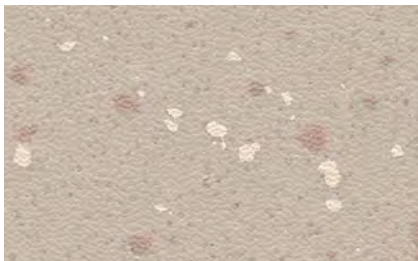
Oregano 5210
NCS S 2005-G70Y

w/r 5210
LRV 48



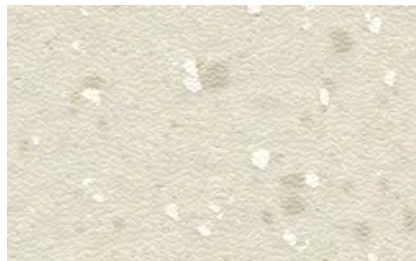
Rainstorm 5202
NCS S 2502-G

w/r 5202
LRV 44



Marshmallow 5214
NCS S 3005-Y50R

w/r 5214
LRV 45



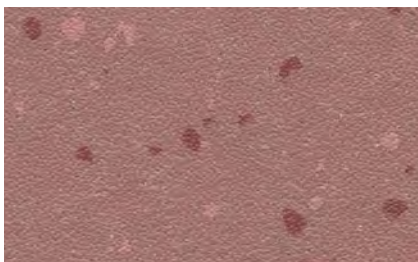
Cookie Cream 5201
NCS S 1502-Y

w/r 5201
LRV 64



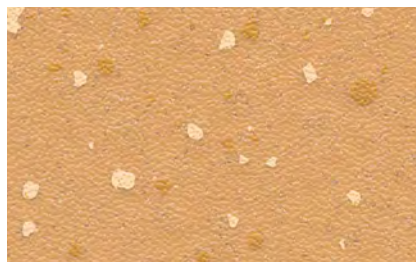
Biscotti 5212
NCS S 3005-Y20R

w/r 5212
LRV 45



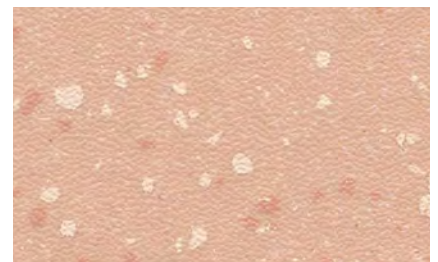
Summer Coulis 5217
NCS S 4020-Y90R

w/r 5217
LRV 21



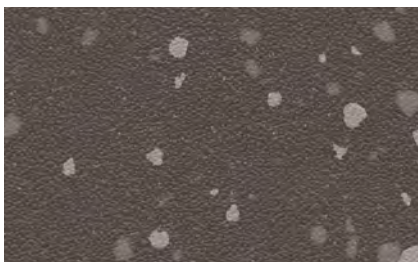
Butterscotch 5218
NCS S 2030-Y30R

w/r 5218
LRV 35



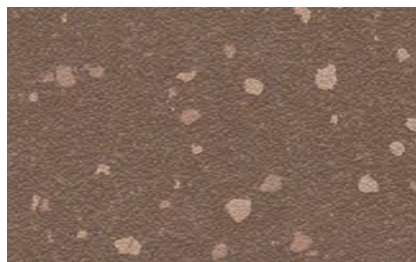
Soft Peach 5216
NCS S 1515-Y60R

w/r 5216
LRV 47



Café Noir 5204
NCS S 7000-N

w/r 5204
LRV 11



Chocolate Chip 5215
NCS S 6005-Y50R

w/r 5215
LRV 16



Caramel Latte 5213
NCS S 3010-Y40R

w/r 5213
LRV 34

ORIGINAL | Part 1

Designed to promote harmony and a sense of well-being, the ORIGINAL Polysafe Verona colour palette has been carefully developed. The collection of tonal colours allows design to meet function, contributing to the creation of soothing interior design schemes. Ideal for use within areas where there is risk of spillage, the ORIGINAL Polysafe Verona collection achieves a pendulum wet test result of 36+ (slider 96) which is sustainable throughout the product's guaranteed life.





Rock Salt 5231
NCS S 3000-N

w/r 9858
LRV 43



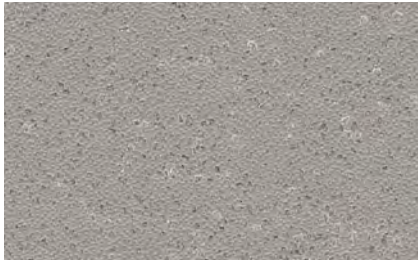
Vanilla 5221
NCS S 1502-Y

w/r 5221
LRV 63



Mocha 5222
NCS S 3005-Y20R

w/r 5212
LRV 43



Monsoon 5226
NCS S 4500-N

w/r 5764
LRV 25



Glacier 5225
NCS S 2502-B

w/r 5202
LRV 47



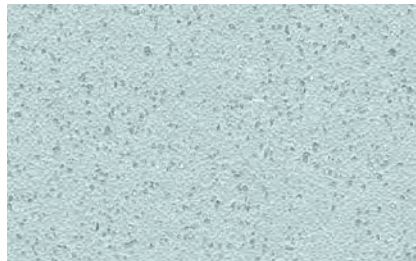
Almond 5223
NCS S 3005-Y80R

w/r 5223
LRV 43



Pebble Shore 5233
NCS S 5500-N

w/r 5233
LRV 21



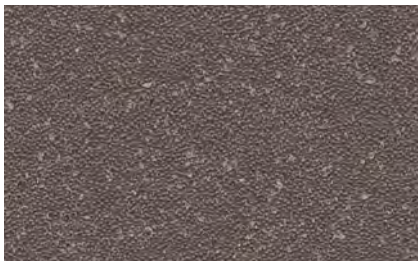
Duck Egg 5235
NCS S 2010-B30G

w/r 5209
LRV 50



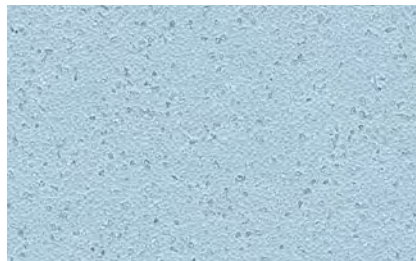
Cappuccino 5224
NCS S 4010-Y50R

w/r 5213
LRV 33



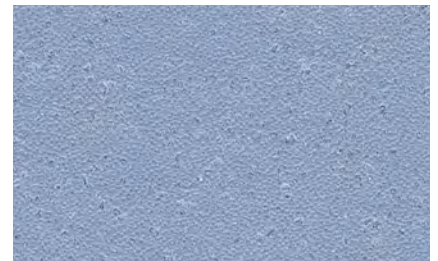
Americano 5234
NCS S 6502-R

w/r 5204
LRV 12



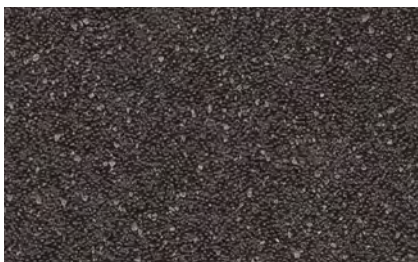
Sea Breeze 5227
NCS S 2020-B

w/r 5205
LRV 44



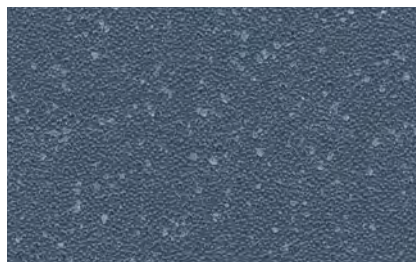
Pacific Blue 5228
NCS S 3020-R90B

w/r 5208
LRV 29



Rich Black 5236
NCS S 8000-N

w/r 8640
LRV 7



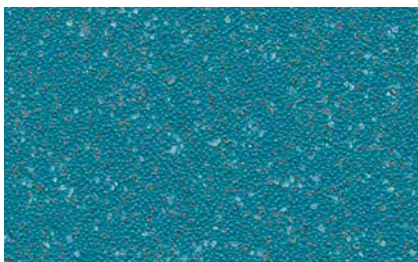
Midnight Blue 5238
NCS S 6010-R90B

w/r 5207
LRV 12



Azure 5229
NCS S 3030-R90B

w/r 5206
LRV 31



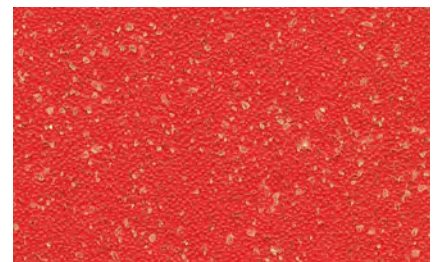
Neptune 5239
NCS S 5040-B20G

w/r 5239
LRV 12



Lemon Drizzle 5241
NCS S 1070-Y

w/r 9947
LRV 54



Berry Red 5232
NCS S 2070-Y90R

w/r 5232
LRV 14

PURE COLOURS | Part 2

The Polysafe Verona PURE COLOURS collection features a contemporary decoration in a selection of tonal hues optimised for specification within dementia friendly design schemes. With a uniform appearance and matt surface finish the collection is perfectly suited for installation within a wide range of commercial and residential environments to ensure the underfoot safety of occupants. Additionally the PURE COLOURS collection features enhanced sustainable slip resistance of 45+ (slider 96).



PURE COLOURS

Choosing the right flooring is key in promoting a more positive and inclusive environment to those living with dementia. Designs that promote harmony and wellbeing through the creation of a sense of calm are important to resident comfort and welfare. Generating this harmonious feel is equally important whether in a residential care setting or within a person's home to support independent living.

Developed with the requirements of those living with dementia in mind, the Polysafe Verona **PURE COLOURS** collection features a tonal colour bank and matt surface finish, optimised to provide a decoration suitable for specification in dementia friendly environments.





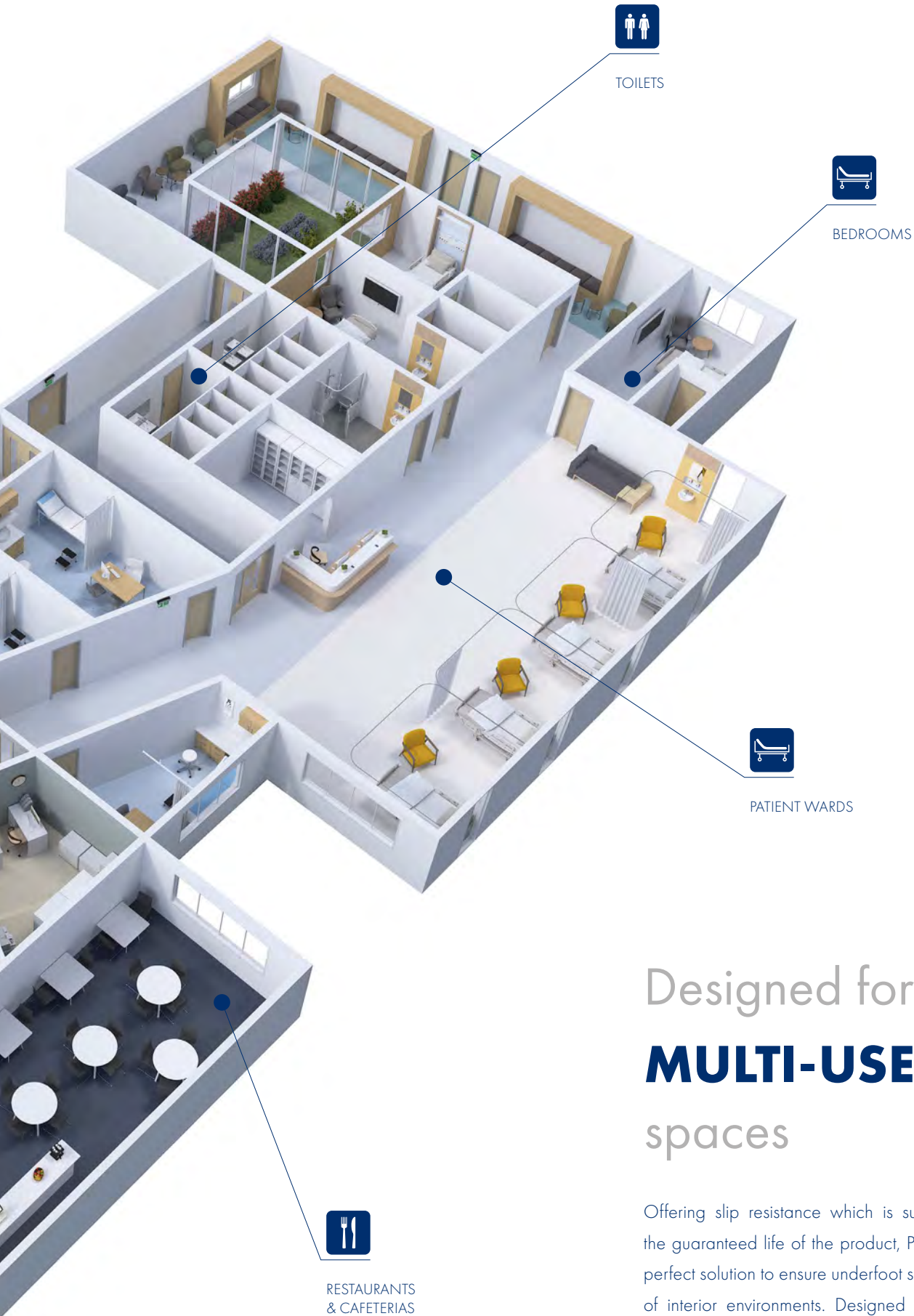
Polyflor worked with the Dementia Services Development Centre (**dsdc**) at the University of Stirling to assess the suitability of the **PURE COLOURS** collection for specification in dementia friendly environments. The **dsdc** is an international centre of knowledge and expertise dedicated to improving the lives of people living with dementia which offers a product accreditation scheme.

The **dsdc** rates products in a tier scale. The Polysafe Verona **PURE COLOURS** collection performs exceptionally well with 14 colours achieving the highest **1a** rating and 4 colours achieving **1b**.

1a	1b	2
Flooring within this rating is plain and can be used indiscriminately.*	Flooring within this rating is semi-plain (minimal texture or fleck / pattern, wood effect with no knots) and in general, can be used throughout.*	Flooring within this rating has some pattern and needs to be used with caution.*
* Bear in mind the need to contrast flooring with walls, skirtings, doors / frames, furniture & sanitary ware. A minimum contrast of 30 units LRV (Light Reflectance Value) is recommended between the critical surfaces mentioned above.		

PURE COLOURS	NCS Reference	LRV's	dsdc Rating
Rock Salt 5231	NCS S 3000-N	43	1a
Glacier 5225	NCS S 2502-B	47	1a
Monsoon 5226	NCS S 4500-N	25	1a
Pebble Shore 5233	NCS S 5500-N	21	1a
Americano 5234	NCS S 6502-R	12	1a
Vanilla 5221	NCS S 1502-Y	63	1a
Almond 5223	NCS S 3005-Y80R	43	1a
Mocha 5222	NCS S 3005-Y20R	43	1a
Cappuccino 5224	NCS S 4010-Y50R	33	1a
Duck Egg 5235	NCS S 2010-B30G	50	1a
Sea Breeze 5227	NCS S 2020-B	44	1a
Pacific Blue 5228	NCS S 3020-R90B	29	1a
Azure 5229	NCS S 3030-R90B	31	1a
Lemon Drizzle 5241	NCS S 1070-Y	54	1a
Berry Red 5232	NCS S 2070-Y90R	14	1b
Neptune 5239	NCS S 5040-B20G	12	1b
Midnight Blue 5238	NCS S 6010-R90B	12	1b
Rich Black 5236	NCS S 8000-N	7	1b





TOILETS



BEDROOMS



PATIENT WARDS



RESTAURANTS
& CAFETERIAS

Designed for **MULTI-USE** spaces

Offering slip resistance which is sustainable throughout the guaranteed life of the product, Polysafe Verona is the perfect solution to ensure underfoot safety in a wide range of interior environments. Designed for multi use spaces where there is an increased risk of slip, Polysafe Verona has a heavy commercial use area classification and is suitable for demanding, high traffic environments.



A modern hospital room with two beds, a yellow armchair, and medical equipment. The room features wood-paneled walls, a yellow accent wall, and a white ceiling with recessed lighting. The beds are white with grey pillows and blankets. A yellow armchair is positioned in the foreground. Medical equipment, including an IV stand and a bedside table, is visible. The overall atmosphere is clean, bright, and professional.

Designed for
HEALTH CARE

Creating calming and soothing interiors
to promote quicker recovery times.



Designed for **SPECIALIST CARE**

Residents and medical professionals can have confidence that their floor covering provides sustainable wet slip resistance offering protection against slips, trips and falls.



Designed for **EARLY YEARS**

Bright vibrant colours stimulate and aid in early development, whilst catering for the inevitable spillages.







Designed for
EDUCATION

Ideal for high traffic areas such as corridors and classrooms where there is a risk of spillage.







Designed for **LEISURE**

Bold colours can be used together to assist exploration within leisure environments.





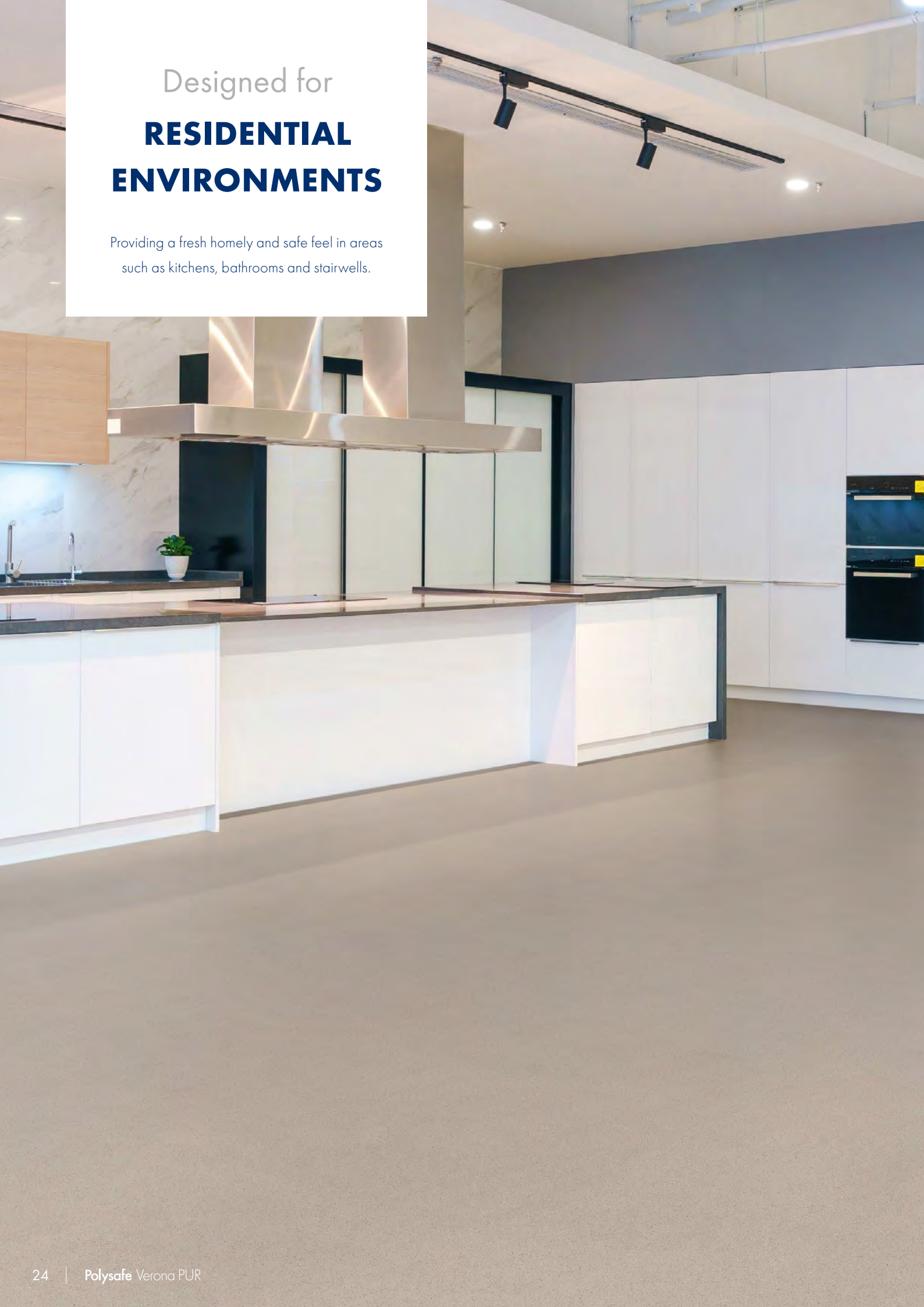
Designed for
**COMMERCIAL
ENVIRONMENTS**

Contemporary styling with built in safety
for increased underfoot protection in
busy commercial spaces.

Designed for

RESIDENTIAL ENVIRONMENTS

Providing a fresh homely and safe feel in areas
such as kitchens, bathrooms and stairwells.





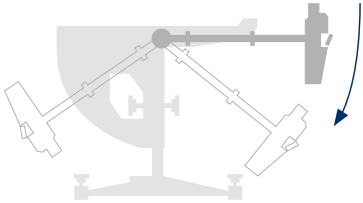
This kitchen must be kept clean and tidy

PRODUCT TESTING

In areas where there is a higher potential for slips and trips, it is important to choose a HSE compliant flooring solution that offers sustainable slip resistance for the product's lifetime.

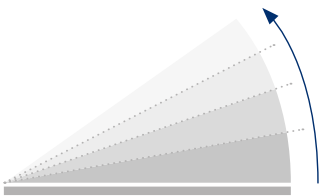
✓

PENDULUM TEST



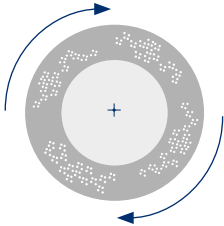
✓

RAMP TEST



✓

50,000 CYCLES TEST



ORIGINAL | Part 1

PURE COLOURS | Part 2

ORIGINAL | Part 1
DIN 51130 & AS 4586

PURE COLOURS | Part 2
DIN 51130 & AS 4586

EN 13845
The European safety flooring standard












Conformance to the 50,000 cycles abrasion test demonstrates that the performance particles within a safety floor are durable, offering longevity and sustainable performance for the guaranteed life of the product.

PUR ✨
TECHNOLOGY ✨

- ✓ Easy clean
- ✓ Maintain cost savings
- ✓ Optimum appearance retention
- ✓ Resistance to staining & chemicals



TECHNICAL SPECIFICATION

	Gauge	EN 428/ISO 24346	2.0mm
	Roll Size	EN 426/ISO 24341	2m x 20m = 40m ²
	Total Weight	EN 430/ISO 23997	2600g/m ²
	General Performance	EN 13845 ASTM F1303	Conforms Conforms
	Use Area	EN 685/ISO 10874	
	Resistance to Chemicals	EN 423	Good chemical resistance
	Reaction to Fire	EN 13501-1 ASTM E648 Aus NCC Spec C1.10-3	Class Bfl-S1 Class 1 Complies
	Abrasion Resistance	EN 13845 EN 649	50,000 cycles Group T
	Enhanced Slip Resistance	The wet slip resistance across all Polysafe products is sustainable throughout the guaranteed life of the product, with strict adherence to HSE Guidelines. For further clarification regarding slip resistance, consult Polyflor.	
	ORIGINAL	EN 13845 AS 4586 Appendix A AS 4586 Appendix D DIN 51130 RRL Pendulum Test Surface Roughness	ESf P3 R10 R10 ≥36 (wet test - 4S Rubber/Slider 96) Rz ≥20µm
	PURE COLOURS	EN 13845 AS 4586 Appendix A AS 4586 Appendix D DIN 51130 RRL Pendulum Test Surface Roughness	ESf P4 R11 R11 ≥45 (wet test - 4S Rubber/Slider 96) Rz ≥20µm
	Electrical Behaviour (body voltage)	EN 1815	≤2kV Classified as 'antistatic'
	VOC Emissions	AgBB VOC test GBCA/NZGBC Green Star IEQ-VOC Floorscore Finnish M1 Classification	Pass Compliant Certified Certified
	Responsible Sourcing	BES 6001	Excellent


Agrément Assurance - Polysafe Verona PUR has been independently assessed by the British Board of Agrément and product performance is assured for at least 10 years in recommended use areas. With proper maintenance, the appearance, colour and slip resistance will be retained during this period.

Environmentally Preferable Flooring - Polysafe Verona PUR achieves BRE Global A+ rating (ENP 472) in the Green Guide to Specification in use areas such as education and healthcare and is GreenTag LCA Rate certified with GreenRate level A - Silver Plus. Generic EN 15804 Environmental Product Declaration (EPD) available on request. It is 100% recyclable and contains recycled material. Recyclable via the Recofloor scheme. Visit www.polyflor.com/sustainability

Polysafe PUR - Polysafe Verona PUR features a high quality, cross-linked polyurethane reinforcement, UV cured to provide superior cleaning benefits, life cycle maintenance savings and optimum appearance retention. As with all Polysafe products, Polysafe Verona PUR should not have a polish applied.

 **Hygiene** - All Polyflor commercial sheet vinyl ranges provide a continuous, impervious and hygienic flooring solution which can be confidently cleaned in accordance with recommended maintenance procedures and approved maintenance products. The implementation of an effective cleaning regime is the most important defence against infection.

Polysafe safety flooring ranges have good resistance to dilute acids and alkalis, are compatible for use with the most commonly used alco-based hand gels and are suitable for steam cleaning on a periodic basis. Chemical resistance charts available on request. For information regarding handling and installation, adhesives, maintenance, applications, chemical resistance and product warranty, consult **Polyflor Customer Technical Services** on +44 (0)161 767 1912, or email tech@polyflor.com.

 As with all Polysafe products, Polysafe Verona PUR should not have a polish applied.
The data presented is correct at the time of printing. For latest information, please visit our website polyflor.com.
Decoration and shade may vary slightly from the samples shown.



100% RECYCLABLE
CONTAINS RECYCLED MATERIAL



 For more information regarding our recommended safety flooring finishes or product testing please contact our Customer Technical Services Department on +44 (0)161 767 1912 or email tech@polyflor.com
Alternatively please visit polyflor.com/safety

Polysafe™

POLYFLOR™ INTERNATIONAL

Australia

Polyflor Australia
Tel: 1800 777 425
E-mail: sales@polyflor.com.au

Canada

Polyflor Canada Inc.
Tel: +1 905 364 3000
E-mail: sales@polyflor.ca

China

Polyflor Hong Kong
Tel: +(852) 2865 0101
E-mail: info@polyflor.com.hk

France

James Halstead France SAS
Tel: +33 (0) 8 20 20 32 11
E-mail: info@jhfrance.fr

Germany

objectflor Art und Design Belags GmbH
Tel: +49 (0) 2236 966 330
E-mail: info@objectflor.de

India

Polyflor India Pvt Ltd
Tel: +91 22 4023 2485
E-mail: info@polyflor.co.in

Ireland

Polyflor Ireland
Tel: +353 (1) 864 9304
E-mail: salesireland@polyflor.com

New Zealand

Polyflor New Zealand Ltd
Tel: 0800 765 935
E-mail: sales@polyflor.co.nz

Norway

Polyflor Nordic
Tel: +47 23 00 84 00
E-mail: firmapost@polyflor.no

Poland

Polflor Sp. Z o.o.
Tel: +48 (0) 61 820 3155
E-mail: polyflor@polflor.com.pl

South Africa

Poly Sales Africa (Pty.) Ltd
Tel: +27 (0) 11 609 3500
E-mail: info@polyflor.co.za

Sweden

FalckDesign AB
Tel: +46 (0) 300 15820
E-mail: info@falckdesign.com

POLYFLOR™ UK

Polyflor Ltd. PO Box 3, Radcliffe New Road,
Whitefield, Manchester, M45 7NR

UK Sales Direct: +44 (0) 161 767 1122
UK Samples Direct: +44 (0) 161 767 2551
Export Sales Direct: +44 (0) 161 767 1913
Technical Support: +44 (0) 161 767 1912
E-mail: info@polyflor.com

polyflor.com/safety