

Specification Sheet No

TDS
18

Description

97212 SHOWER DRAIN
110MM VO FOR VINYL

Date

MAY
2021

TECHNICAL DATA SHEET

Polyflor shower drain round with 110mm vertical outlet and removable F.A.T. Trap to allow access to the drainage system, fitted with a special nylon holding clamp to secure Polyflor sheet vinyl.

Manufactured from Grade 304 stainless steel and tested in accordance with EN 1253.

Suitable for use with Polyflor Sheet vinyl or other similar floor finishes.

The drain unit needs to be installed with standard plumbing fittings at a finished level of 1.5-2.0mm below the finished floor level (vinyl sheet) to facilitate efficient runaway of water.

Installation Instructions:

Locate the drain in the correct position in the floor and connect to the drainage pipework system. *Ensure the gradient/fall in the floor level is sufficient to encourage the flow of water towards the drain. The recommended ratio of fall within showers is between 1:60 and 1:80.* Backfill around the drain and dress floor finish up to the drain edge. Remove any protective tape/film from the unit. A mastic sealant of bead width 5-8mm is recommended around the outside of the drain top edge and floor where a good watertight seal is required between the two materials. Ensure the sealant is applied in accordance with the manufacturer's instructions.

PLEASE NOTE:

The off-take capacity of the drain is not only determined by the capacity of the actual drain itself, but also the waste pipe to which these elements are to be connected.

Please adhere to the following instructions:

The length of the waste pipeline to the vertical waste stack of the system must be as short as possible.

Avoid bends in the system where possible.

Make sure that the waste pipe has a sufficient gradient for the discharge required.

The diameter of the waste pipeline must be 50mm.

The capacity of the shower drain is approximately 1.2 l/s [tested according to EN1253], which is more than sufficient for most shower types. If the shower drain is used for multiple showers or for showers with a higher capacity, please contact Polyflor S.A.

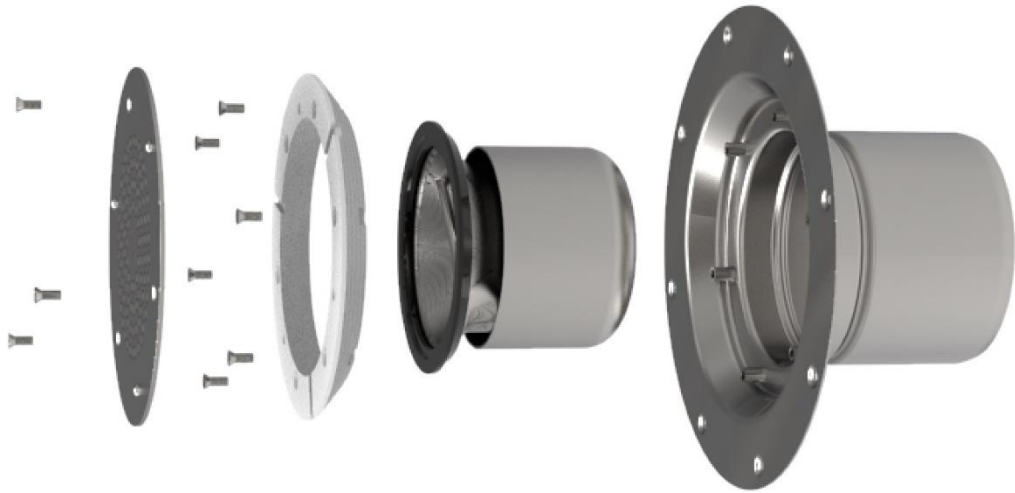
SPECIALIST FLOORING & WALL PROTECTION PARTNER

Tel: 011 609 3500 | Email: marketing@polyflor.co.za | www.polyflor.co.za
Poly Sales House, 8B Buwbes Road North, Sebenza, 1609, South Africa. PO Box 3967, Edenvale, 1610, South Africa

Poly Sales Africa (Pty) Ltd. trading as Polyflor South Africa. Company Registration 2004/012256/07
Directors: DL Coleman, P du Plessis, T Coleman, A Mc Lardy

Features and Benefits

- Robust body and massive upper surface guarantee a problem free long term operation
- Flexible installation due to rotatable and adjustable top section
- Suitable for public areas due to locked grating
- Load class: K 3
- Brushed silk gloss grating
- Suitable for all push fit pipe socket systems
- Socket inclination 90°





97212