

Specification Sheet No	TDS62	Description	405156 SHOWER DRAIN 50MM SO FOR CERAMICS	Date	MAY 2021
------------------------	-------	-------------	---------------------------------------------	------	-------------

TECHNICAL DATA SHEET

Polyflor Shower Drain Round with 50mm Side Outlet and F.A.T. Trap

Manufactured from grade 304 stainless steel. Product tested in accordance with EN 1253.

Suitable for use with ceramic tiles or other similar floor finishes.

The drain unit needs to be installed with standard plumbing fittings at a finished level of 1.5-2.0mm below the finished floor level (vinyl sheet) to facilitate efficient runaway of water.

Tamper safe screws are available for specific healthcare environments.

Top sections can be rotated and telescopically height adjusted for easy levelling with finished floor.

Installation Instructions:

Locate the drain in the correct position in the floor and connect to the drainage pipework system. *Ensure the gradient/fall in the floor level is sufficient to encourage the flow of water towards the drain.* Backfill around the drain and dress floor finish up to the drain edge. Remove any protective tape/film from the unit. A mastic sealant of bead width 5-8mm is recommended around the outside of the drain top edge and floor where a good watertight seal is required between the two materials. Ensure the sealant is applied in accordance with the manufacturer's instructions.

PLEASE NOTE:

Robust body and massive upper surface guarantee a problem free long-term operation. Flexible installation due to rotatable and adjustable top section. Suitable for public areas due to locked grating. From stainless steel, material grade 316. With integrated stainless-steel foul air trap 50 mm. Water sealant height: 50 mm Slotted grating of stainless-steel Load class: K 3. Brushed silk gloss grating. Locked grating. Suitable for all push fit pipe socket systems. Socket inclination 1,5°

FLANGE DESIGN:

With location flange

DESCRIPTION:

For damp membrane applications. With slotted grating. Gully top: 150 x 150 mm

FLOW RATE(l/s):

1.2

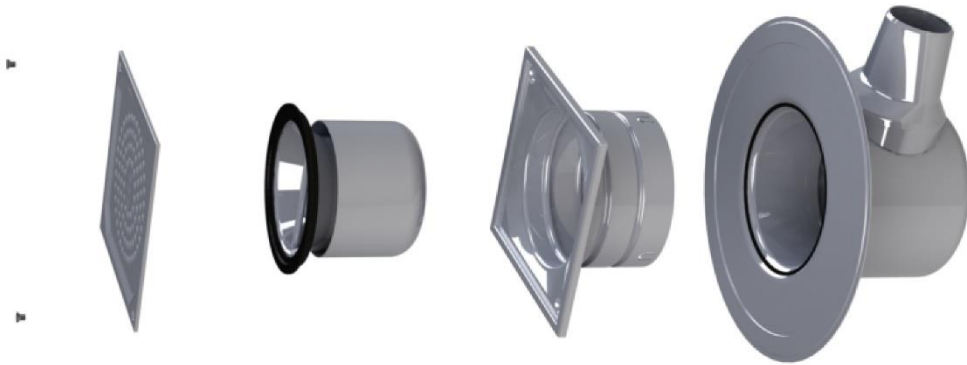
SPECIALIST FLOORING & WALL PROTECTION PARTNER

Tel: 011 609 3500 | Email: marketing@polyflor.co.za | www.polyflor.co.za
Poly Sales House, 8B Buwbes Road North, Sebenza, 1609, South Africa. PO Box 3967, Edenvale, 1610, South Africa

Poly Sales Africa (Pty) Ltd. trading as Polyflor South Africa. Company Registration 2004/012256/07
Directors: DL Coleman, P du Plessis, T Coleman, A Mc Lardy

Features and Benefits

- Robust body and massive upper surface guarantee a problem free long term operation
- Flexible installation due to rotatable and adjustable top section
- Suitable for public areas due to locked grating
- Load class: K 3
- Brushed silk gloss grating
- Suitable for all push fit pipe socket systems
- Socket inclination 1,5°





405156